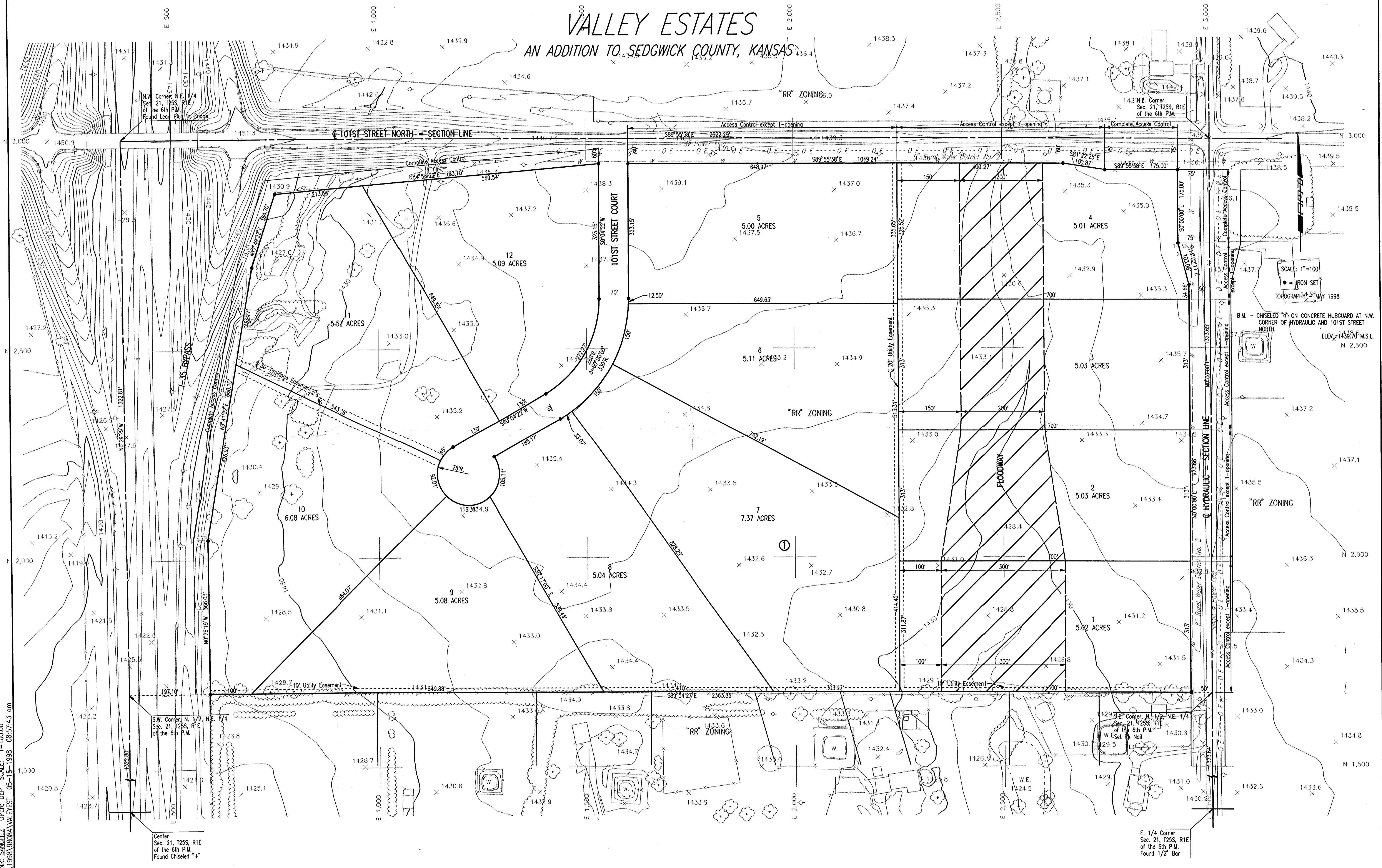


VALLEY ESTATES

AN ADDITION TO SEDGWICK COUNTY, KANSAS



N.W. Corner, N.E. 1/4
Sec. 21, T25S, R1E
of the 6th P.M.
Found Lead Plug in Bridge

S.W. Corner, N. 1/2, N.E. 1/4
Sec. 21, T25S, R1E
of the 6th P.M.

Center
Sec. 21, T25S, R1E
of the 6th P.M.
Found Chiseled "x"

E. 1/4 Corner
Sec. 21, T25S, R1E
of the 6th P.M.
Found 1/2" Bar

SCALE: 1"=100'
● = IRON SET
TOPOGRAPHY MAY 1998

B.M. - CHISELED "x" ON CONCRETE HUBGARD AT N.W.
CORNER OF HYDRAULIC AND 101ST STREET
NORTH.
ELEV. = 1439.70' M.S.L.
N 2,500

DSNR: SANCHEZ OPER: DEP. SCALE: 1"=100.00
C:\1998\86084\VALEYEST_05-15-1998_08:57:43.am