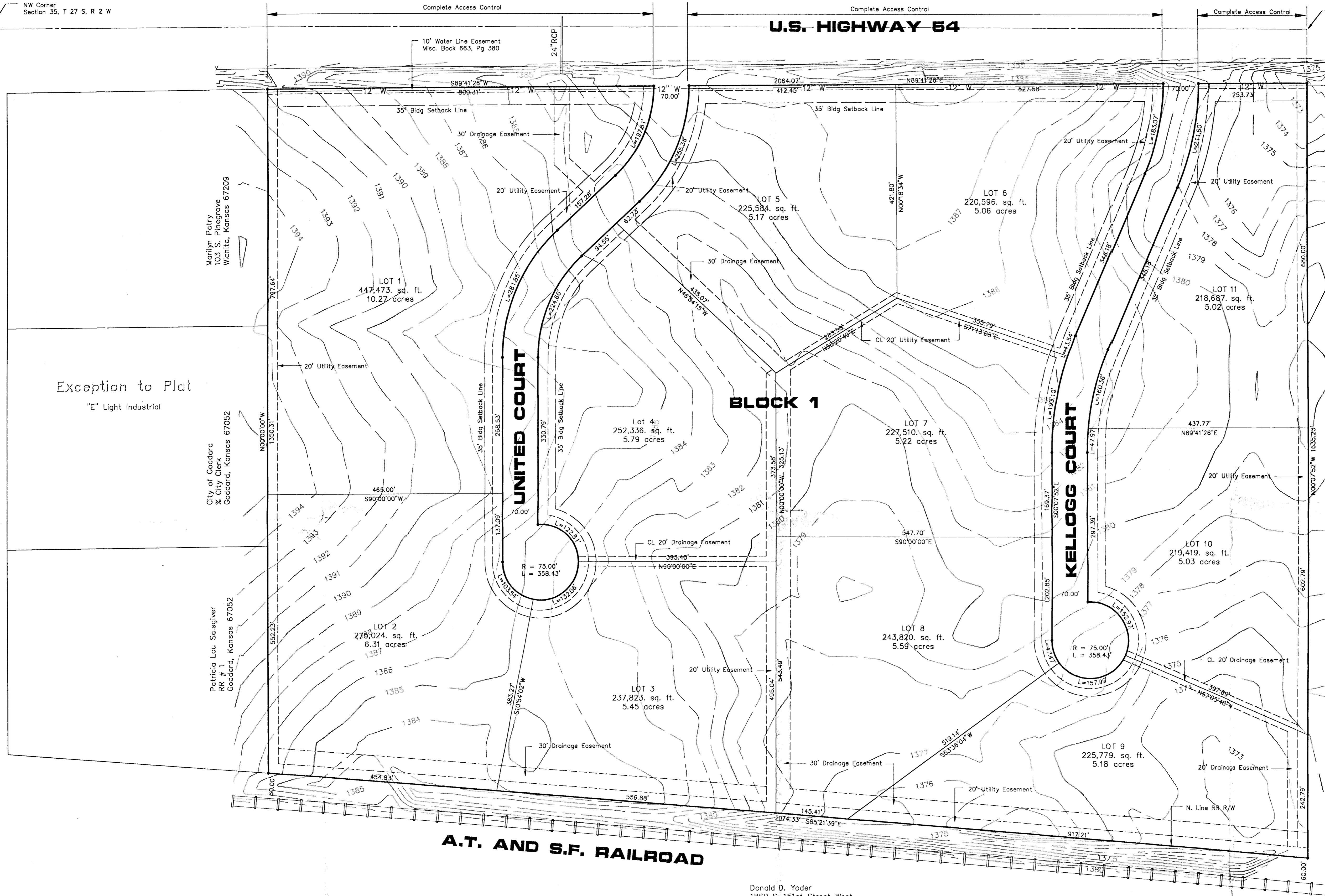


NW Corner  
Section 35, T 27 S, R 2 W

NE Corner NW 1/4  
Section 35, T 27 S, R 2 W

U.S. HIGHWAY 54

151ST STREET WEST



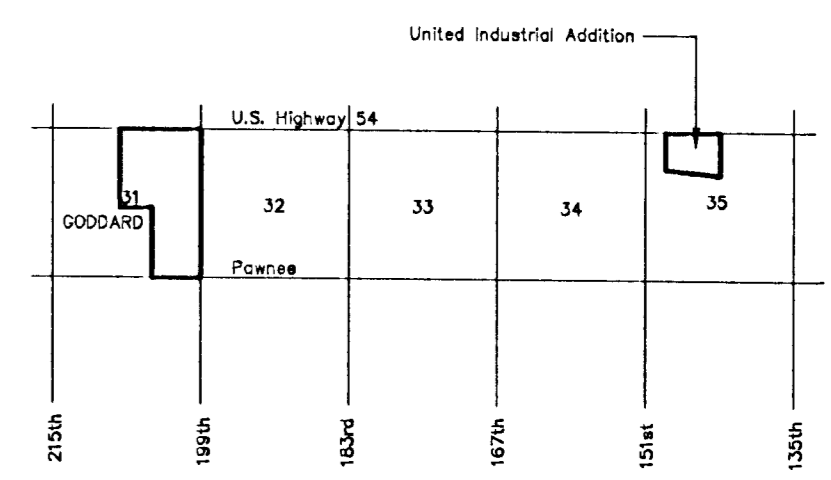
Scale 1" = 100'

"C" Commercial  
Rebun J. Hubbard  
PO Box 205  
Derby, Kansas 67037

**NOTES:**

1. Bench Mark #12 "□" cut on south end of 24" RCP, 65' right of Station 484+19. Elevation 1386.21
2. Topography Survey Completed June 26, 1991
3. Existing Zoning is Light Commercial and Industrial
4. Gross Area is 68.28 Acres
5. Minimum Lot Area is 5.0 Acres

"E" Light Industrial



**VICINITY MAP**

No Scale

**PRELIMINARY PLAT**

September 26, 1991

**UNITED INDUSTRIAL ADDITION**

Owner: United Auto Parts Inc. - 2235 Southwest Blvd - Wichita, Kansas 67213

Donald D. Yoder  
1860 S. 151st Street West  
Goddard, Kansas 67052

"R" Rural Residential

POE & ASSOCIATES OF KANSAS, INC.

Consulting Engineers  
434 N. Oliver Suite 110 ■ Wichita KS 67208 ■ 316/585-4114