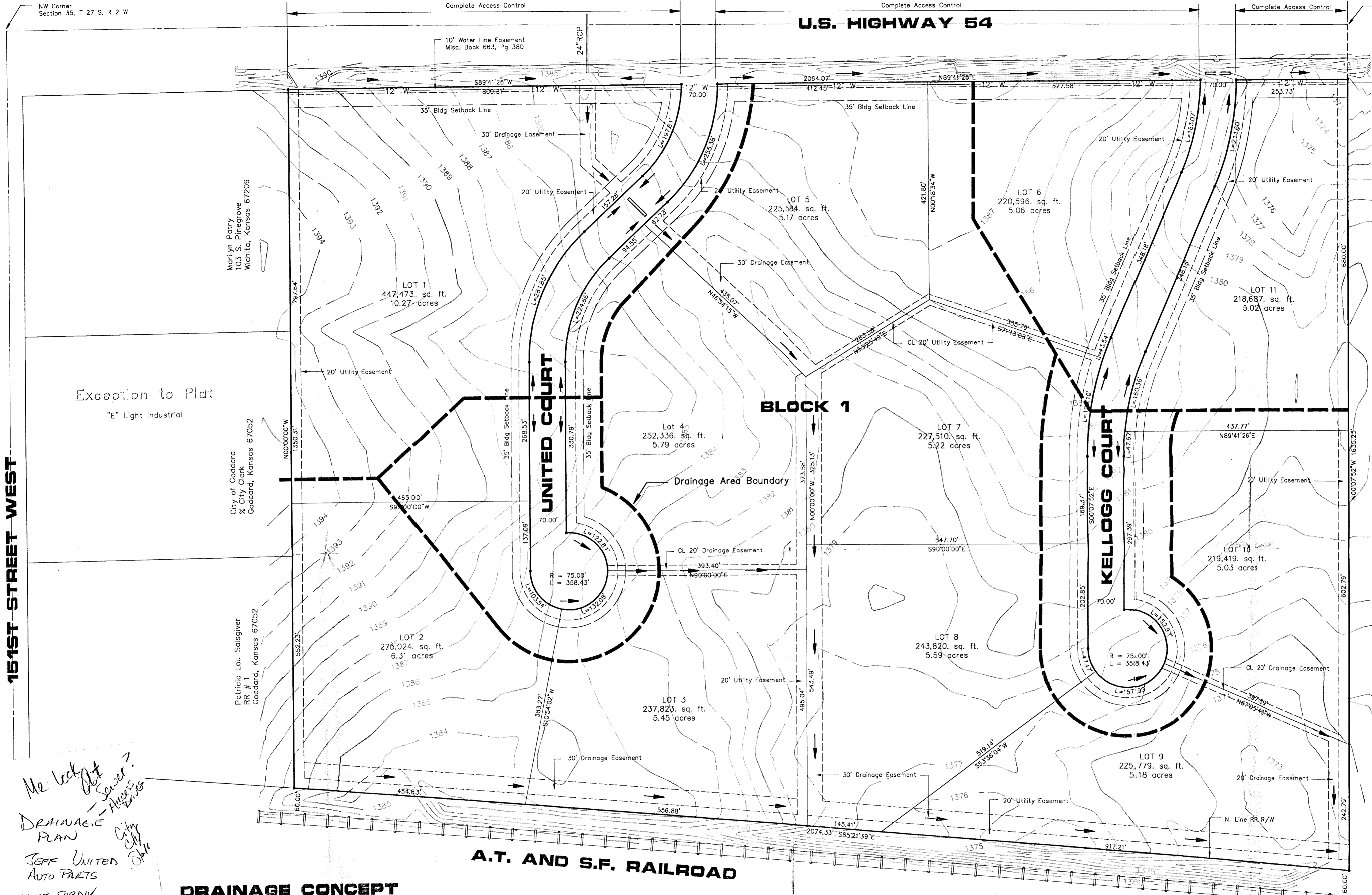


NW Corner
Section 35, T 27 S, R 2 W

NE Corner NW 1/4
Section 35, T 27 S, R 2 W

U.S. HIGHWAY 54

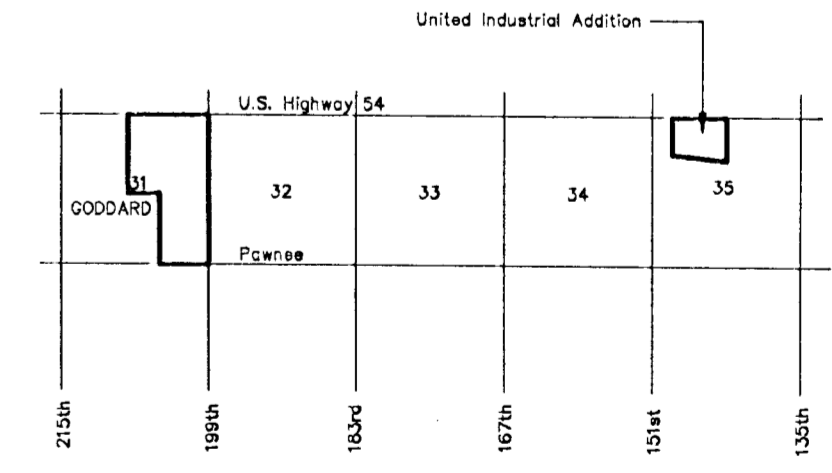


Exception to Plat
"E" Light Industrial

Scale 1" = 100'

NOTES:

1. Bench Mark #12 "□" cut on south end of 24" RCP, 65' right of Station 484+19. Elevation 1386.21
2. Topography Survey Completed June 26, 1991
3. Existing Zoning is Light Commercial and Industrial
4. Gross Area is 68.28 Acres
5. Minimum Lot Area is 5.0 Acres



VICINITY MAP

No Scale

*Me look at
Sewer?
Access
Drives
City
City
State*

DRAINAGE PLAN

**JEFF UNITED
AUTO PARTS
NEXT SUBDIV.**

DRAINAGE CONCEPT
FOR
PRELIMINARY PLAT

September 26, 1991

UNITED INDUSTRIAL ADDITION

Owner: United Auto Parts Inc. - 2235 Southwest Blvd - Wichita, Kansas 67213

Donald D. Yoder
1880 S. 151st Street West
Goddard, Kansas 67052

"R" Rural Residential