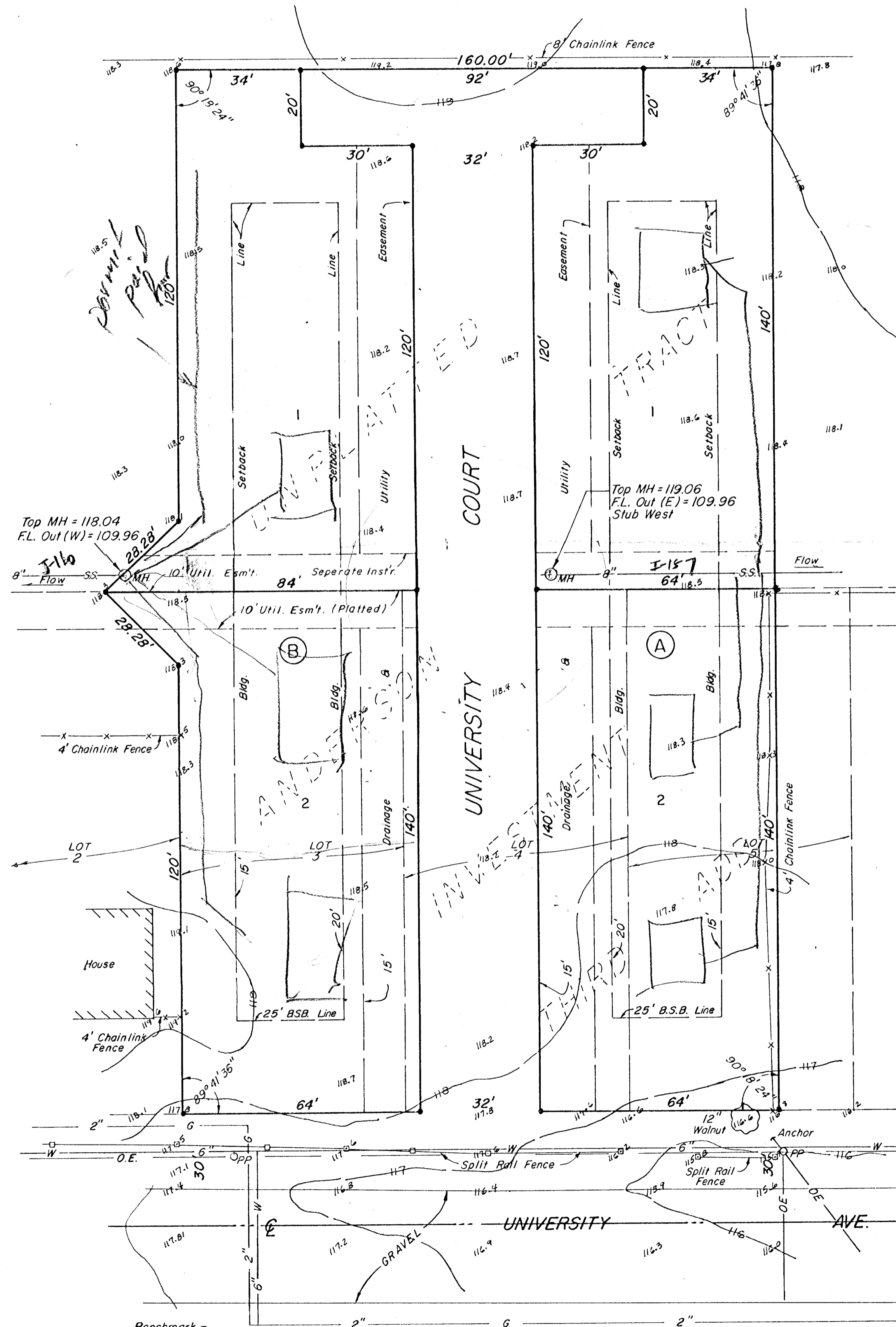
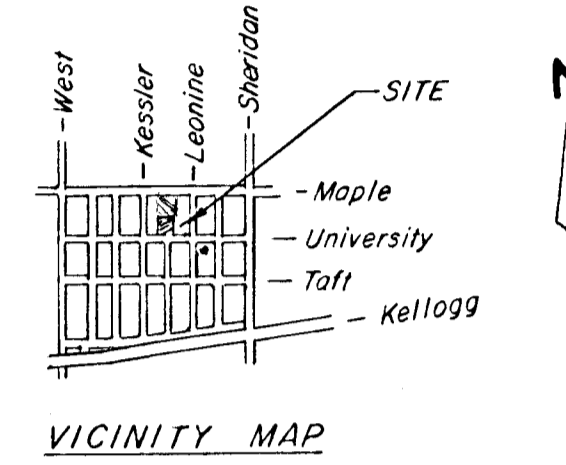
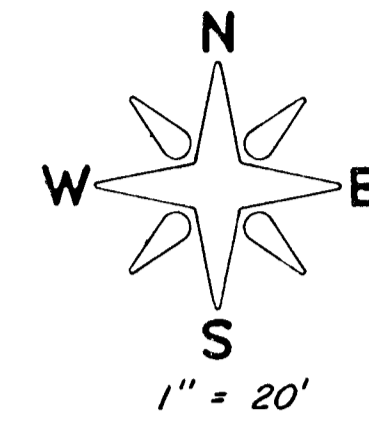


PRELIMINARY PLAT
of
UNIVERSITY COURT THIRD ADDITION
To Wichita, Kansas



- LEGEND**
- S.S. = Sanitary Sewer
 - W = Water
 - OE = Overhead Electric
 - FL = Flow Line
 - 118.4 = Spot Elevation
 - P.P. = Power Pole
 - M.H. = Manhole
 - G = Gas

LEGAL DESCRIPTION

A TRACT OF LAND IN THE NORTH 1/2 OF THE NE 1/4 OF THE NW 1/4 OF SEC. 25, T25S, R10W OF THE 6TH P.M., SEDGWICK COUNTY, KANSAS, DESCRIBED AS FOLLOWS: BEGINNING AT A POINT IN THE NORTH LINE AND 40.0' EAST OF THE NORTHWEST CORNER OF LOT 5, ANDERSON INVESTMENT THIRD ADDITION TO WICHITA, SEDGWICK COUNTY, KANSAS; THENCE NORTH PARALLEL WITH THE EAST LINE OF THE NE 1/4 OF SAID NW 1/4, A DISTANCE OF 140.0'; THENCE WEST PARALLEL WITH THE SOUTH LINE OF THE NE 1/4 OF SAID NW 1/4, A DISTANCE OF 160.0'; THENCE SOUTH PARALLEL WITH THE EAST LINE OF THE NE 1/4 OF SAID NW 1/4, A DISTANCE OF 120.0'; THENCE SOUTHWESTERLY AT AN INCLUDED ANGLE OF 135°, A DISTANCE OF 28.28' MORE OR LESS TO THE NORTHWEST CORNER OF LOT 3 IN SAID ANDERSON INVESTMENT THIRD ADDITION; THENCE EAST ALONG THE NORTH LINE OF SAID ADDITION, A DISTANCE OF 180.0' TO THE POINT OF BEGINNING.

AND ALSO

LOTS 3, 4 AND THE WEST 40.0' OF LOT 5 IN ANDERSON INVESTMENT THIRD ADDITION TO WICHITA, SEDGWICK COUNTY, KANSAS.

MOEHRING & ASSOCIATES
CONSULTING ENGINEERS
WICHITA
May 21, 1987



Benchmark -
" + " on Top of Curb at West
End Curb Return at SW Cor.
Kessler & Maple. Elev. = 115.34