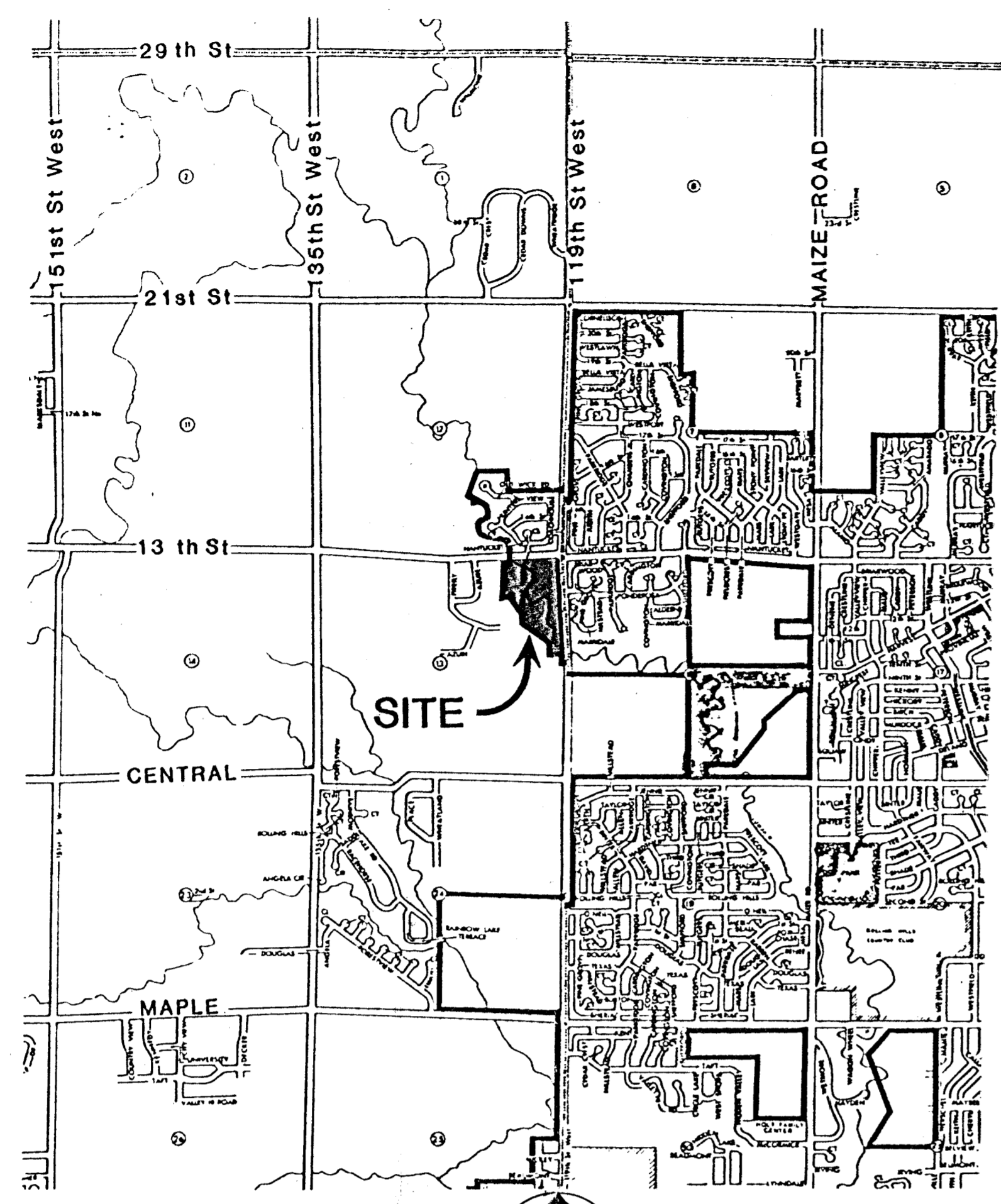
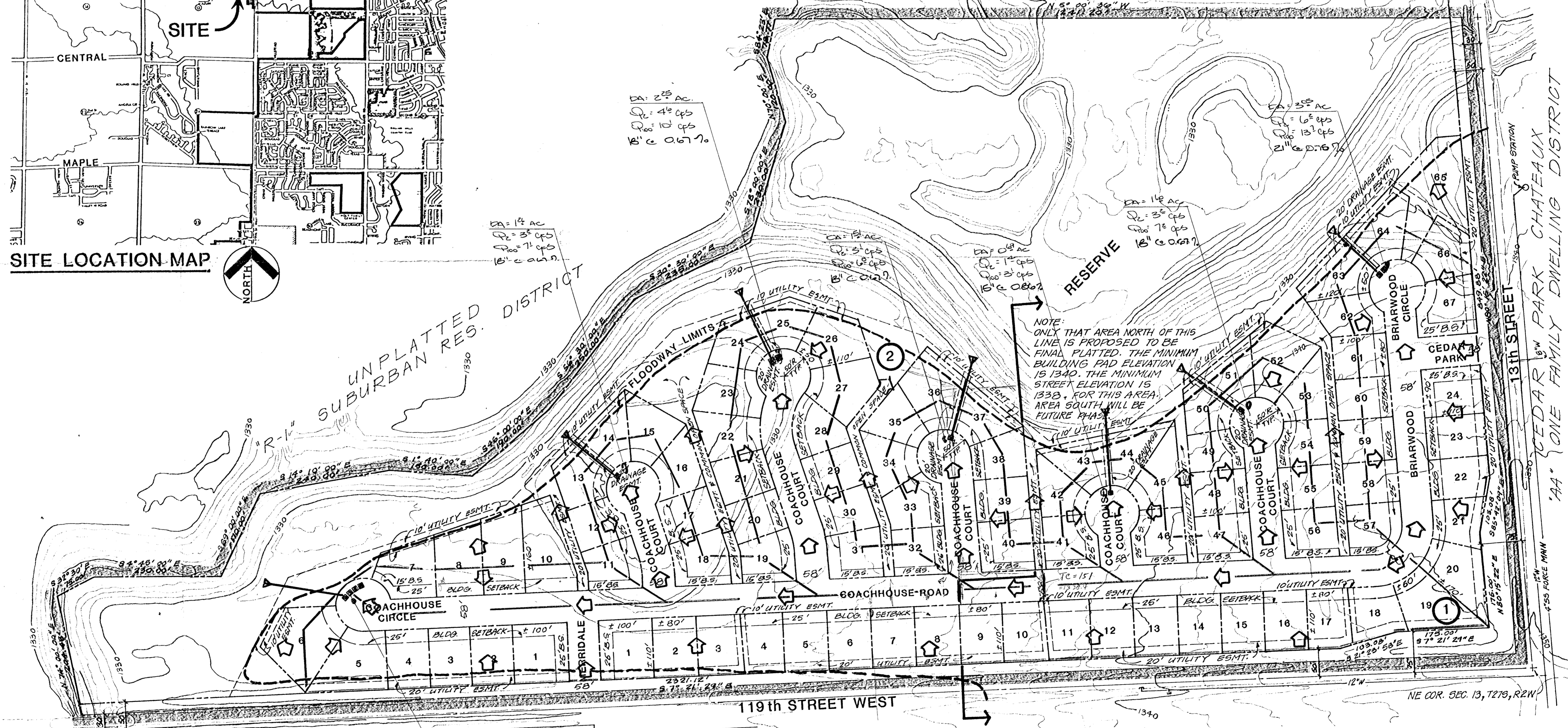


drainage plan

1-15-84



SITE LOCATION MAP



WHISTLING WALK ESTATES THIRD ADDITION
"R-1" SUBURBAN RES. DISTRICT

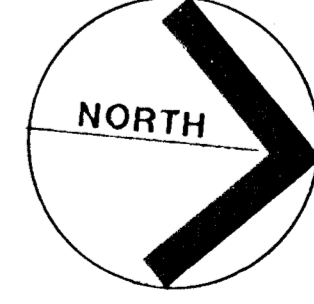
UNPLATTED "AA" ONE FAMILY DWELLING DISTRICT

BRIARWOOD ESTATES "AA" ONE FAMILY DWELLING DISTRICT

WALNUT CREEK ADDITION PRELIMINARY PLAT

WICHITA, SEDGWICK COUNTY, KANSAS

TOPOGRAPHY BY: ALLIED LABS
AERIAL FLIGHT 12/17/81
DATUM: MEAN SEA LEVEL
CONTOUR INTERVAL: 2 FT.
LOCATION: N.E. 1/4, SECTION 13, T27S, R2W



SCALE 1" = 100'

Note - SINGLE FAMILY RESIDENCES
Runoff Factor = 0.50 FOR ALL AREAS.

POS
INCORPORATED
PLANNING DEVELOPMENT SERVICES, INC.
River Park Plaza, Suite 125
727 North Wood
Wichita, KS 67203 316-262-0451 Telex 417-375 POS WIC

WALNUT CREEK ADDITION
SEDGWICK COUNTY, KANSAS
WICHITA, KANSAS
OWNER: WESTWIND ASSOCIATES

DRAWN MONTGOMERY
CHECKED GIST
REVISED
DATE 1/6/84

SHEET **1** OF ONE