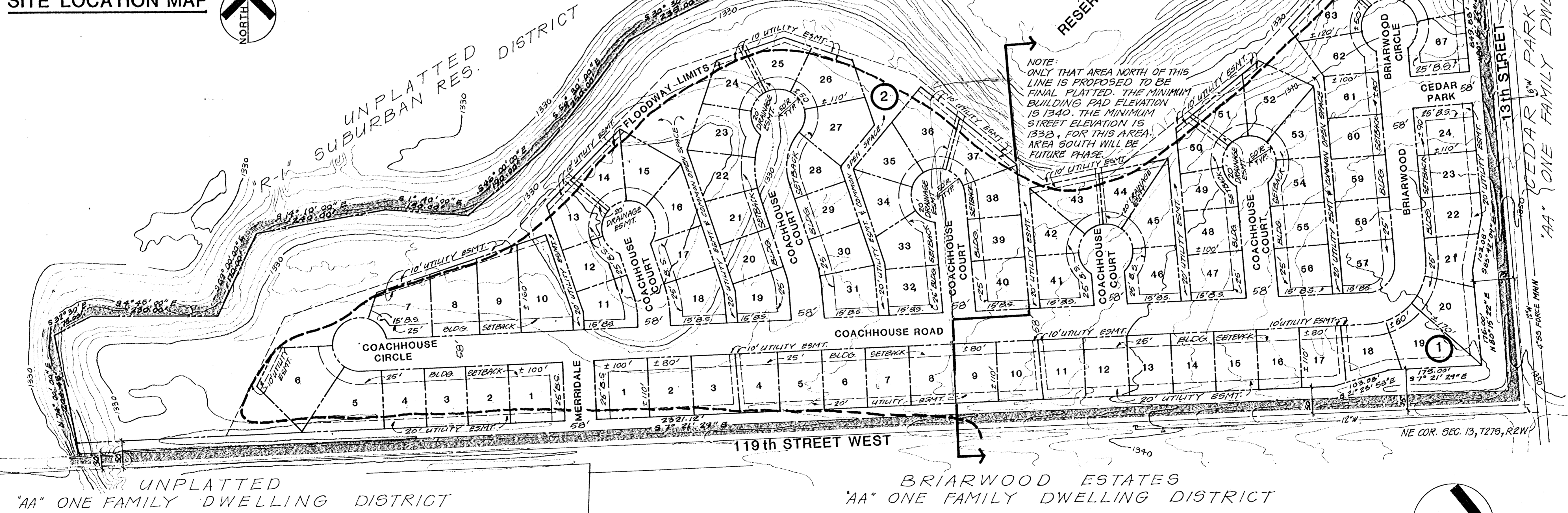


SITE LOCATION MAP



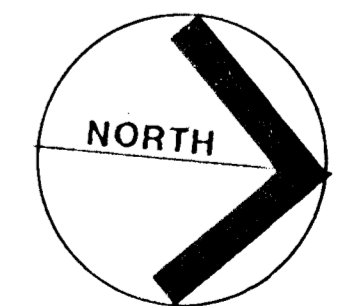
UNPLATTED  
"AA" ONE FAMILY DWELLING DISTRICT

BRIAARWOOD ESTATES  
"AA" ONE FAMILY DWELLING DISTRICT

# WALNUT CREEK ADDITION PRELIMINARY PLAT

WICHITA, SEDGWICK COUNTY, KANSAS

TOPOGRAPHY BY: ALLIED LABS  
AERIAL FLIGHT 12/7/81  
DATUM: MEAN SEA LEVEL  
CONTOUR INTERVAL: 2 FT  
LOCATION: N.E. 1/4, SECTION 13, T21S,  
R 2 W



SCALE 1" = 100'