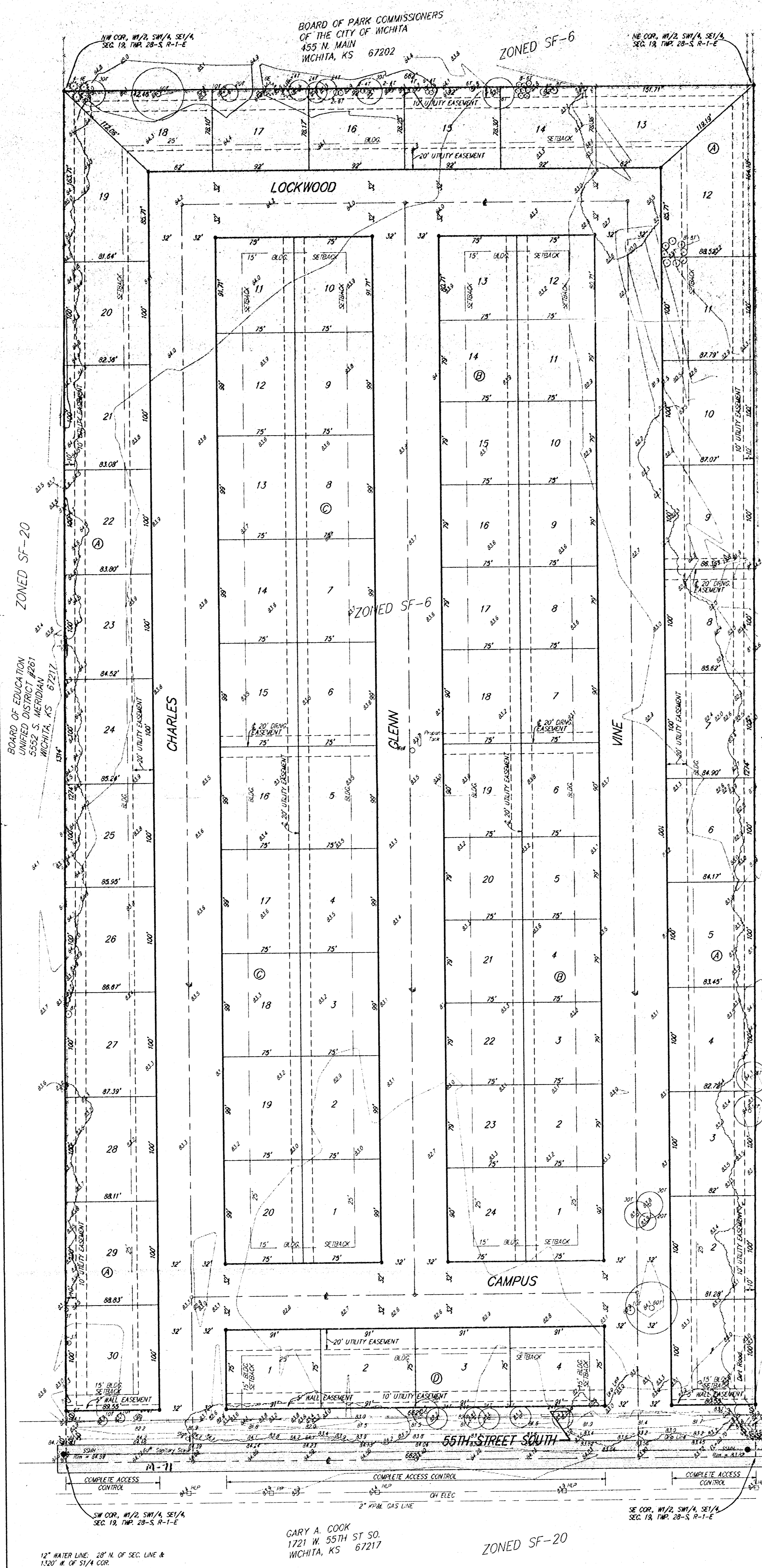


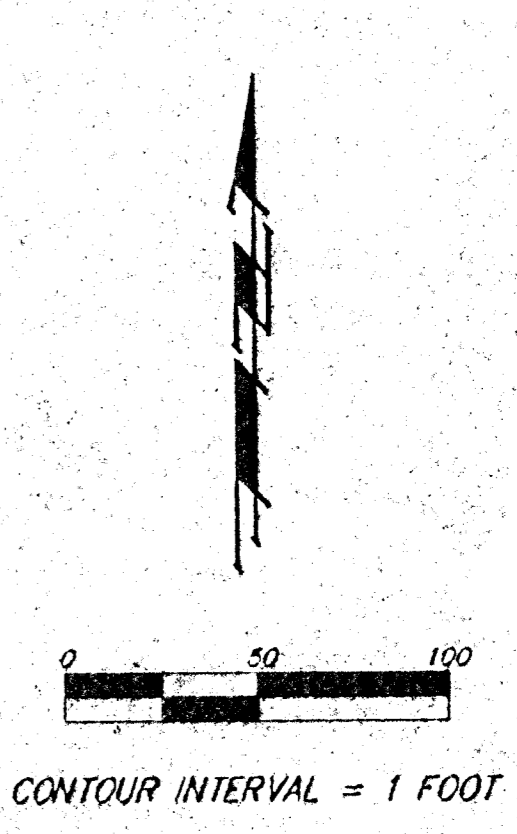
PRELIMINARY PLAT  
**SIMMONS PARK ADDITION**  
 WICHITA, SEDGWICK COUNTY, KANSAS



BOARD OF PARK COMMISSIONERS  
 OF THE CITY OF WICHITA  
 455 N. MAIN  
 WICHITA, KS 67202

BOARD OF EDUCATION  
 UNITED DISTRICT #261  
 5552 S. MERIDIAN  
 WICHITA, KS 67217

BOARD OF PARK COMMISSIONERS  
 OF THE CITY OF WICHITA  
 455 N. MAIN  
 WICHITA, KS 67202

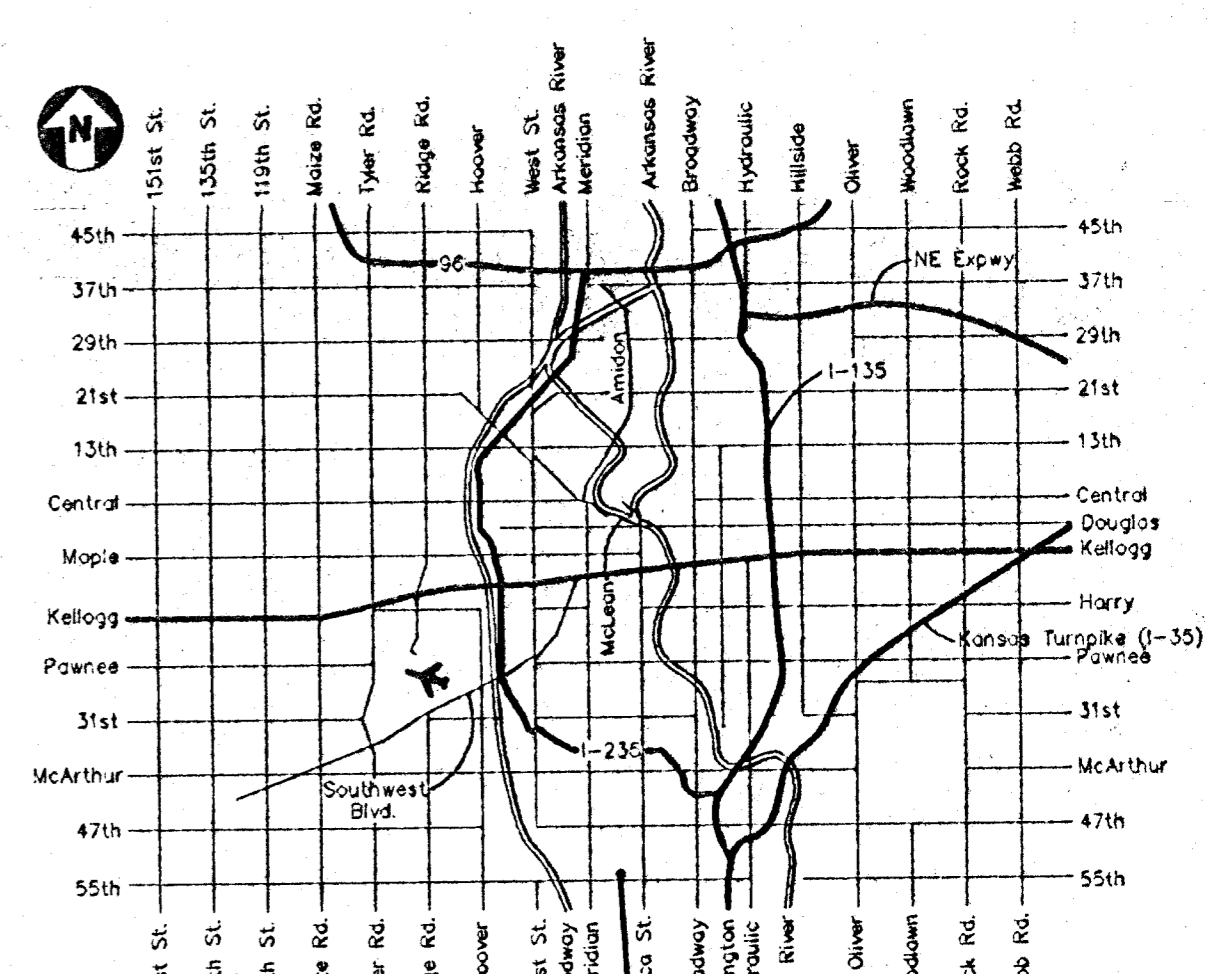


- E = Evergreen Tree
- D = Dry Anchor
- H = High Line Pole
- P = Power Pole
- S = Sign
- SS = Sanitary Sewer Washline
- W = Wood
- = 1/4 IRON W/ "DAUGHMAN" CAP (SET)

OWNER:  
 W. F. & MARJORIE A. SIMMONS  
 903 W. 58TH STREET SOUTH  
 WICHITA, KS 67217  
 PH# 524-7265

LEGAL DESCRIPTION:  
 THE W1/2 OF THE SW1/4 OF THE  
 SE1/4 OF SEC. 19, TWP. 28-S,  
 R-1-E OF THE 6TH P.M.,  
 SEDGWICK COUNTY, KANSAS

BENCHMARK:  
 CITY OF WICHITA BENCHMARK -  
 NW CORNER OF INTERSECTION OF  
 SENECA & 55TH ST. SO.; SE COR.  
 OF TRAFFIC SIGNAL LIGHT BASE.  
 66.0' W. & 49.4' N. OF @ BOTH.  
 86.03' NW OF 1/2" IRON @ SEC. COR.  
 ELEV = 83.56 CITY DATUM



VICINITY MAP

12" WATER LINE, 28" N. OF SEC. LINE &  
 1320' W. OF SW1/4 COR.

GARY A. COOK  
 1721 W. 55TH ST. SO.  
 WICHITA, KS 67217

ZONED SF-20