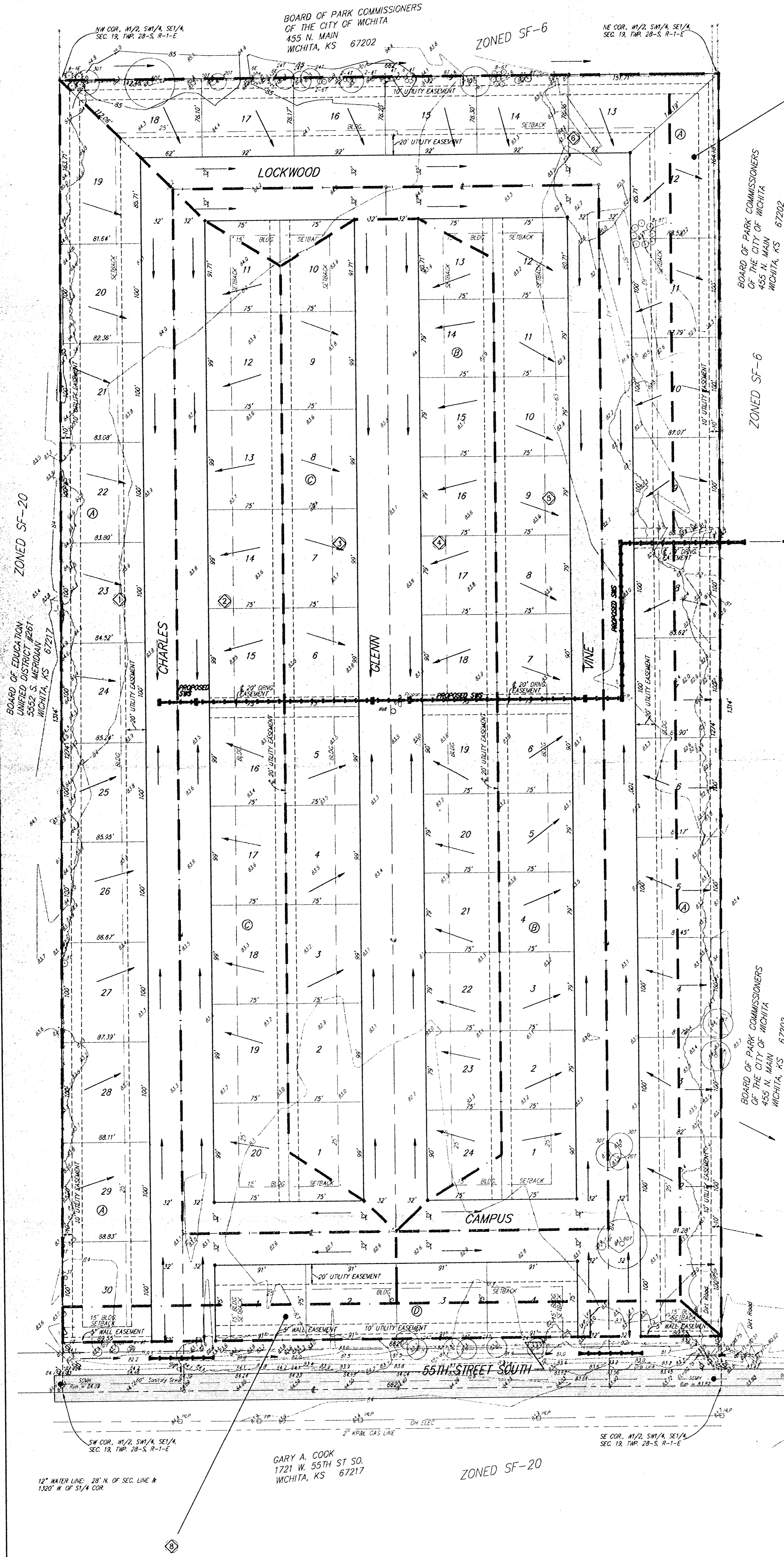
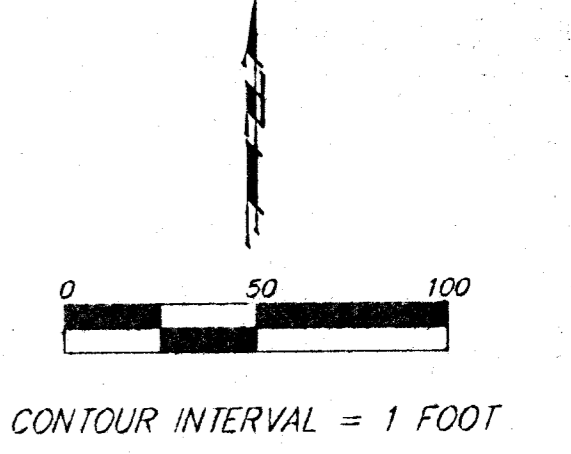


# DRAINAGE CONCEPT SIMMONS ADDITION

## WICHITA, SEDGWICK COUNTY, KANSAS



BOARD OF PARK COMMISSIONERS  
 OF THE CITY OF WICHITA  
 455 N. MAIN  
 WICHITA, KS 67202

BOARD OF PARK COMMISSIONERS  
 OF THE CITY OF WICHITA  
 455 N. MAIN  
 WICHITA, KS 67202

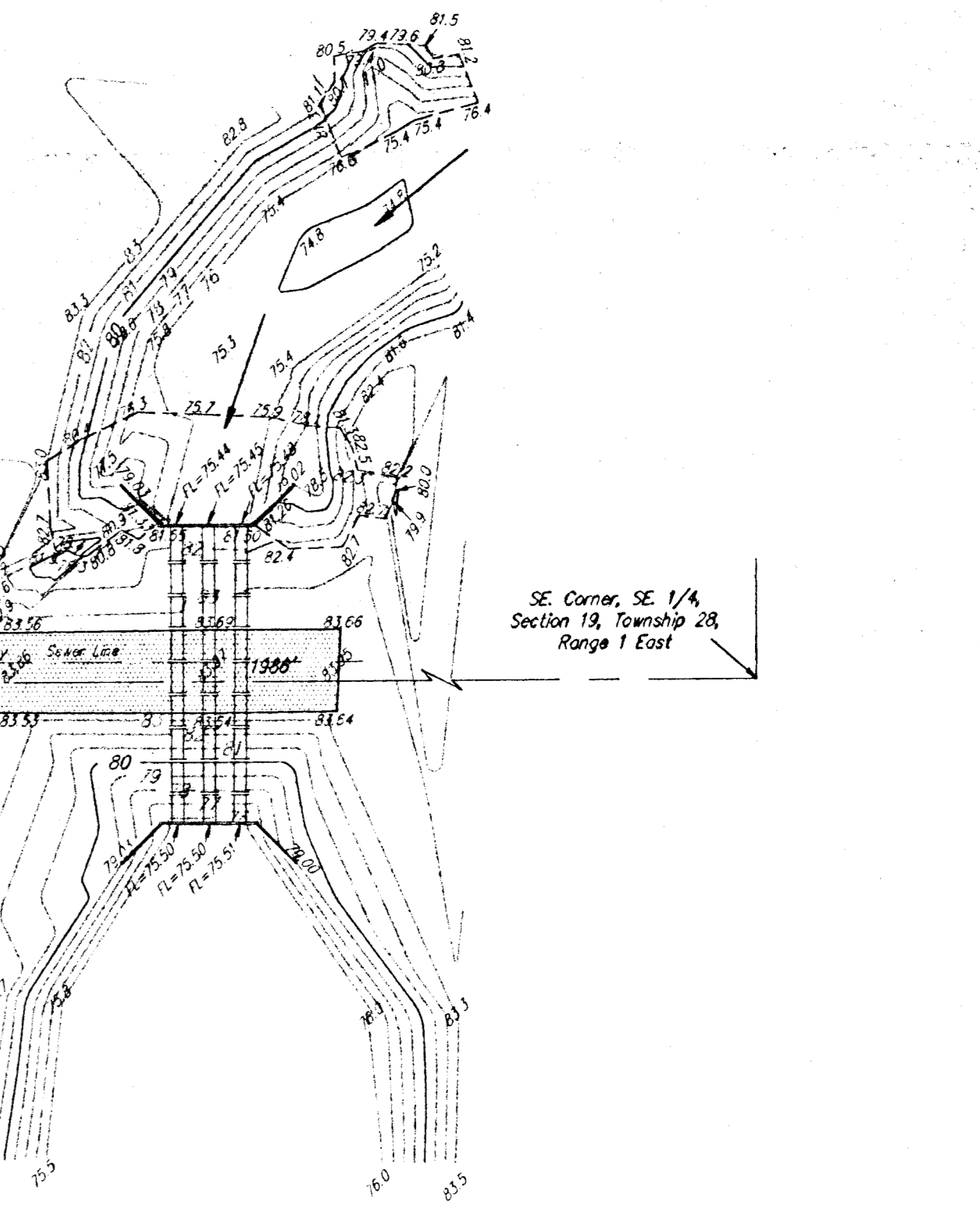
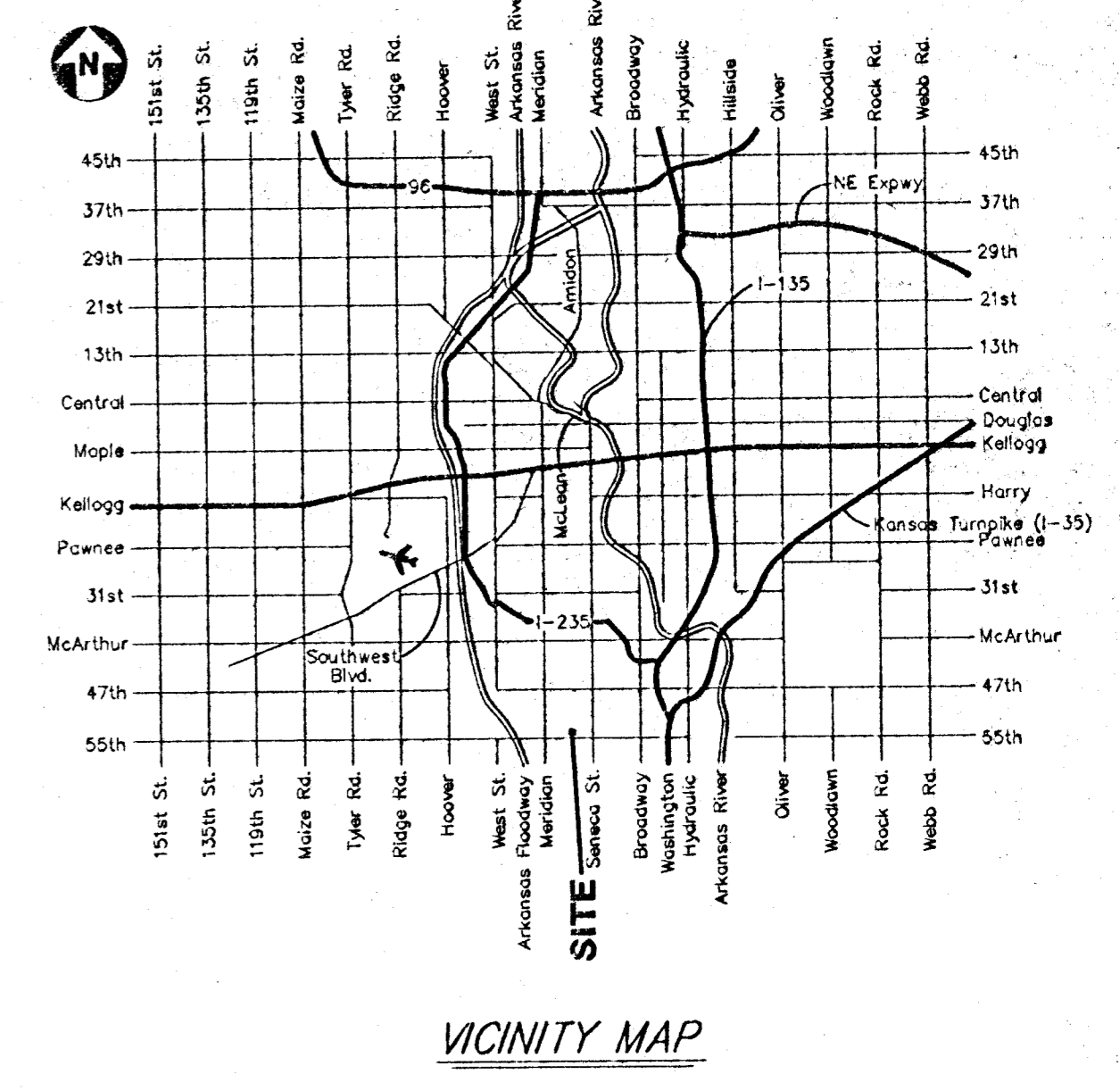
BOARD OF PARK COMMISSIONERS  
 OF THE CITY OF WICHITA  
 455 N. MAIN  
 WICHITA, KS 67202

OWNER:  
 W. F. & MARJORIE A. SIMMONS  
 903 W. 58TH STREET SOUTH  
 WICHITA, KS 67217

LEGAL DESCRIPTION:  
 THE W<sup>1</sup>/<sub>2</sub> OF THE SW<sup>1</sup>/<sub>4</sub> OF THE  
 SE<sup>1</sup>/<sub>4</sub> OF SEC. 19, TWP. 28-S, R-1-E  
 OF THE 6TH P.M.,  
 SEDGWICK COUNTY, KANSAS

BENCHMARK:  
 CITY OF WICHITA BENCHMARK -  
 NW CORNER OF INTERSECTION OF  
 SENECA & 55TH ST. SO.; SE COR.  
 OF TRAFFIC SIGNAL LIGHT BASE.  
 66.0' W. & 49.4' N. OF C. BOTH.  
 86.03' NW OF 1/2" IRON @ SEC. COR.  
 ELEV. = 83.56 CITY DATUM

Drainage Area	Area (Acres)	C <sub>s</sub>	C <sub>w</sub>	T <sub>p</sub> (min)	I <sub>p</sub> (in)	Q <sub>p</sub> (cfs)	Q <sub>10</sub> (cfs)	Q <sub>50</sub> (cfs)
1	1.5	0.60	0.60	15	3.83	7.56	8.0	13.5
2	2.8	0.60	0.60	15	3.83	7.56	8.0	11.5
3	2.3	0.60	0.60	15	3.83	7.56	8.0	10.2
4	2.3	0.60	0.60	15	3.83	7.56	8.0	10.2
5	3.0	0.60	0.60	15	3.83	7.56	8.0	13.2
6	3.8	0.60	0.60	15	3.83	7.56	8.0	15.9
7	1.3	0.50	0.50	15	3.83	7.56	2.5	4.7
8	0.5	0.50	0.50	15	3.83	7.56	1.0	1.8



GARY A. COOK  
 1721 W. 55TH ST. SO.  
 WICHITA, KS 67217