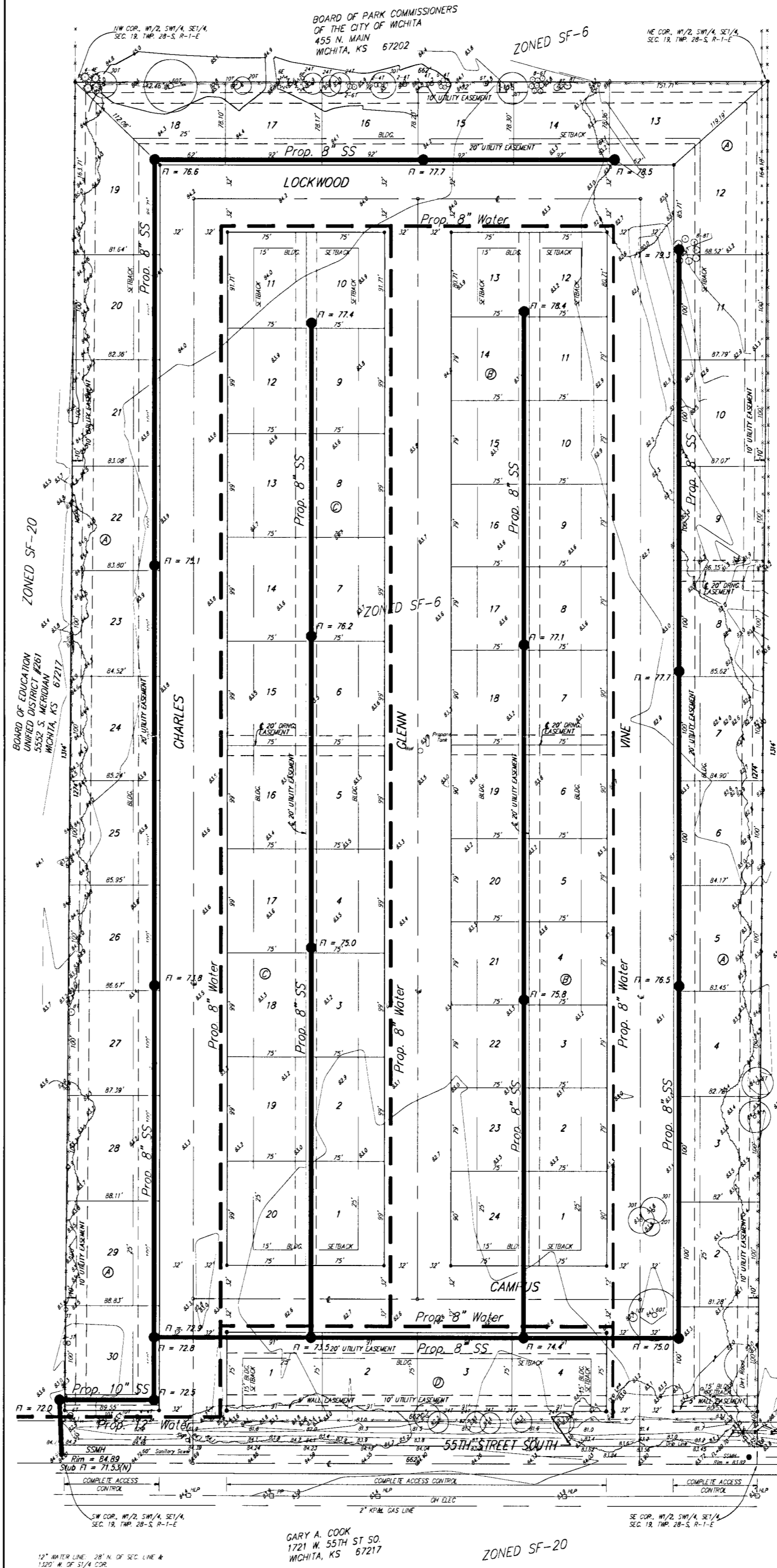


UTILITY PLAN  
**SIMMONS PARK ADDITION**  
 WICHITA, SEDGWICK COUNTY, KANSAS



BOARD OF PARK COMMISSIONERS  
 OF THE CITY OF WICHITA  
 455 N. MAIN  
 WICHITA, KS 67202

BOARD OF PARK COMMISSIONERS  
 OF THE CITY OF WICHITA  
 455 N. MAIN  
 WICHITA, KS 67202

BOARD OF PARK COMMISSIONERS  
 OF THE CITY OF WICHITA  
 455 N. MAIN  
 WICHITA, KS 67202



Scale: 1" = 50'  
 CONTOUR INTERVAL = 1 FOOT

- E = Evergreen Tree
- D = Dry Arch
- HLP = High Line Pole
- PP = Power Pole
- S = Sign
- SS = Sanitary Sewer Manhole
- W = Cased Well
- = #4 REBAR W/ "BAUGHMAN" CAP (SET)
- Proposed Sanitary Sewer
- Proposed Water Main

DOWNER:  
 W. F. & MARJORIE A. SIMMONS  
 903 W. 56TH STREET SOUTH  
 WICHITA, KS 67217  
 PH# 524-7265

LEGAL DESCRIPTION:  
 THE W/2 OF THE SW/4 OF THE  
 SE/4 OF SEC. 19, TWP. 28-S,  
 R-1-E, OF THE 6TH P.M.,  
 SEDGWICK COUNTY, KANSAS

BENCHMARK:  
 CITY OF WICHITA BENCHMARK -  
 NW CORNER OF INTERSECTION OF  
 SENECA & 55TH ST. S.O. SE COR.  
 OF TRAFFIC SIGNAL LIGHT BASE  
 66.0' W. & 43.4' N. OF E BOTH  
 86.03' NW OF 1.2" IRON @ SEC. COR.  
 ELEV. = 83.56 CITY DATUM

SW COR. W/2 SW/4 SE/4  
 SEC. 19, TWP. 28-S, R-1-E

GARY A. COOK  
 1721 W. 55TH ST. SO.  
 WICHITA, KS 67217

SE COR. W/2 SW/4 SE/4  
 SEC. 19, TWP. 28-S, R-1-E

