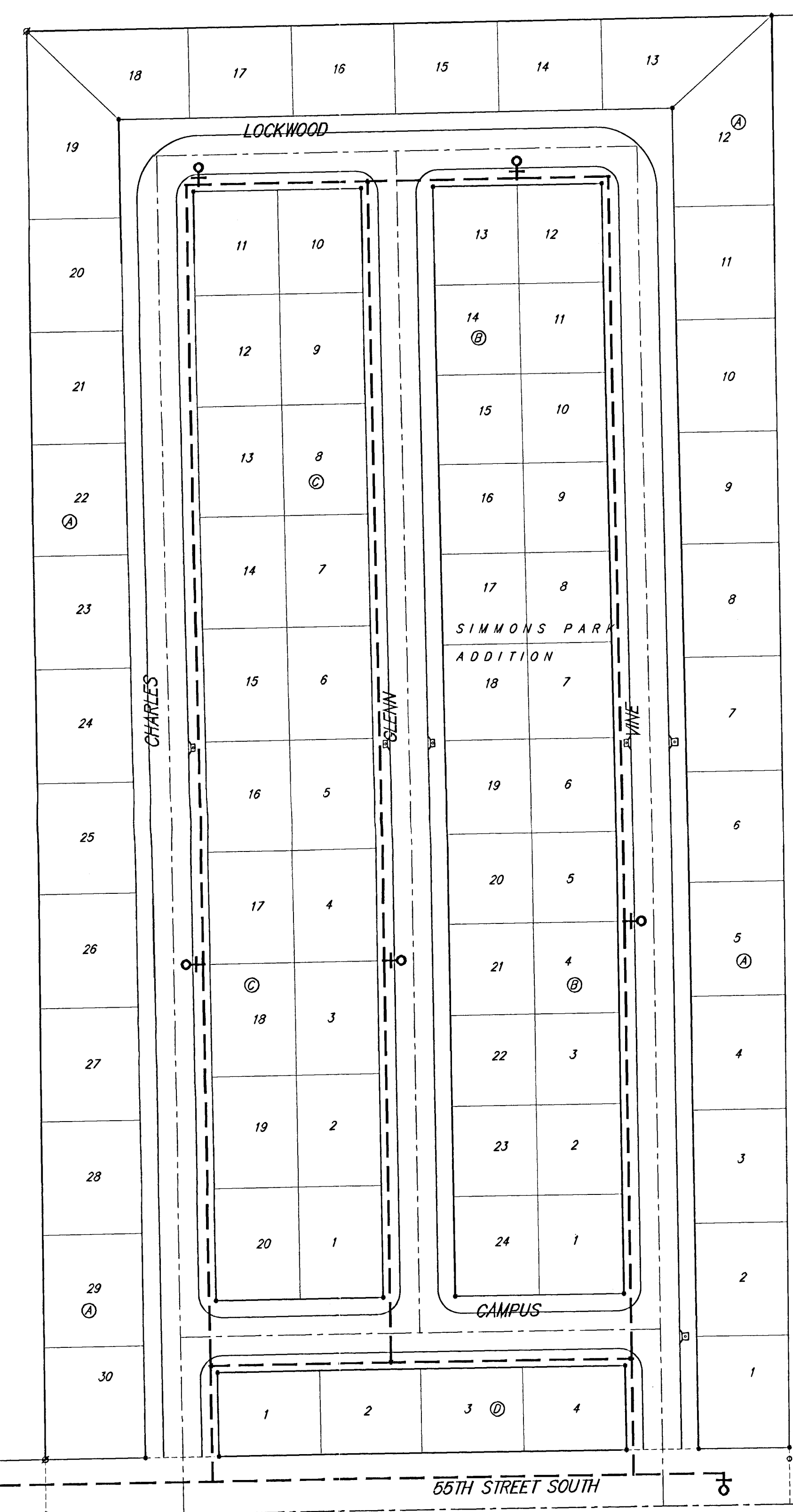


BENCHMARK:
C.O.W. Benchmark—NW Corner
of intersection of Seneca and
55th St. South; SE Corner of
traffic signal light base. 66.0'
West and 49.4' North of G
of both. 86.03' NW of 1/2"
iron @ Sec. Cor.
Elev. = 83.56 City Datum

Scale: 1" = 80'
• = Iron



CAMPUS COMPLEX
ADDITION

♀ Proposed Fire Hydrant



**SIMMONS PARK ADDITION
FH LAYOUT**
WICHITA, KANSAS

MD BAUGHMAN COMPANY P.A.
ENGINEERING, SURVEYING, & PLANNING
315-262-7271 • 315 ELLIS • WICHITA, KANSAS 67211

PROJECT NUMBER _____ SHEET **1**
OF **1**

DESIGN NEW	DRAWN TMC	APPROVED	DATE 2--99	SCALE NOTED
---------------	--------------	----------	---------------	----------------

SIMMONS PARK ADDITION-04-E084