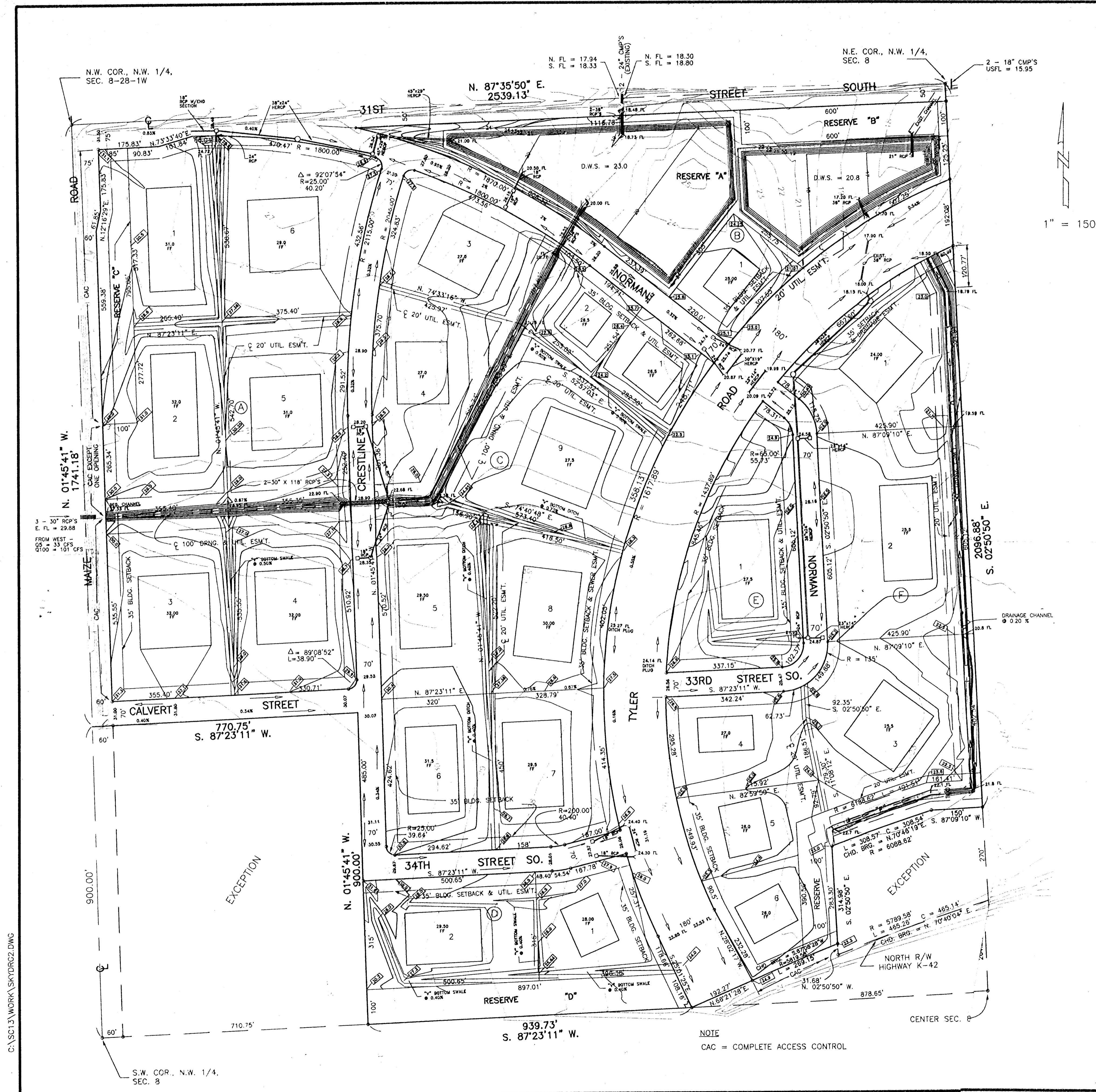


SKYWAY INDUSTRIAL PARK

AN ADDITION TO WICHITA, SEDGWICK COUNTY, KANSAS

SITE DRAINAGE PLAN & LOT GRADING PLAN



LEGEND

1. ELEV'S INSIDE STREET R/W'S ARE PROPOSED TOP OF CURB.
2. [28.2] = PROPOSED ELEVATIONS AT LOT CORNERS AND/OR EDGE OF DRAINAGE ESM'S AT PROPERTY LINES
3. 22.90 FL = FLOWLINE ELEVATION OF PROPOSED DRAINAGE CHANNELS/SWALES
4. FF = FINISH FLOOR ELEVATION

NOTES

- a). DRAINAGE CHANNELS WITHIN DRAINAGE EASEMENTS ARE TO BE CONSTRUCTED WITH 8' WIDE BOTTOMS AND 4:1 SIDE SLOPES, AND ARE TO BE CONSTRUCTED AS PART OF THE OVERALL SITE DRAINAGE IMPROVEMENTS.
- b). WHERE INDICATED, "V" BOTTOM DRAINAGE SWALES ARE TO BE CONSTRUCTED WITH 10:1 SIDE SLOPES, TO FACILITATE ADJACENT LOT DRAINAGE, AND ARE TO BE CONSTRUCTED AT THE TIME OF DEVELOPMENT AND GRADING OF INDIVIDUAL LOTS.

BENCHMARK

1. RR SPIKE IN HEDGE TREE, 450' S. OF N.E. COR., N.W. 1/4, SEC. 8. ELEV. = 1325.05 M.S.L.
2. BRASS DISC IN CONC. BASE, 50' E. AND 30' S. OF THE N.E. COR., N.W. 1/4, SEC. 8. ELEV. = 1317.59 M.S.L.

NOTE: ADD 1300.00 TO CONTOUR ELEVATIONS TO CONVERT TO M.S.L.

Storm Water Drain

MOEHRING & ASSOCIATES
CONSULTING ENGINEERS
WICHITA
MAY, 1998



NOTE
CAC = COMPLETE ACCESS CONTROL

C:\SC13\WORK\SKYDRG2.DWG