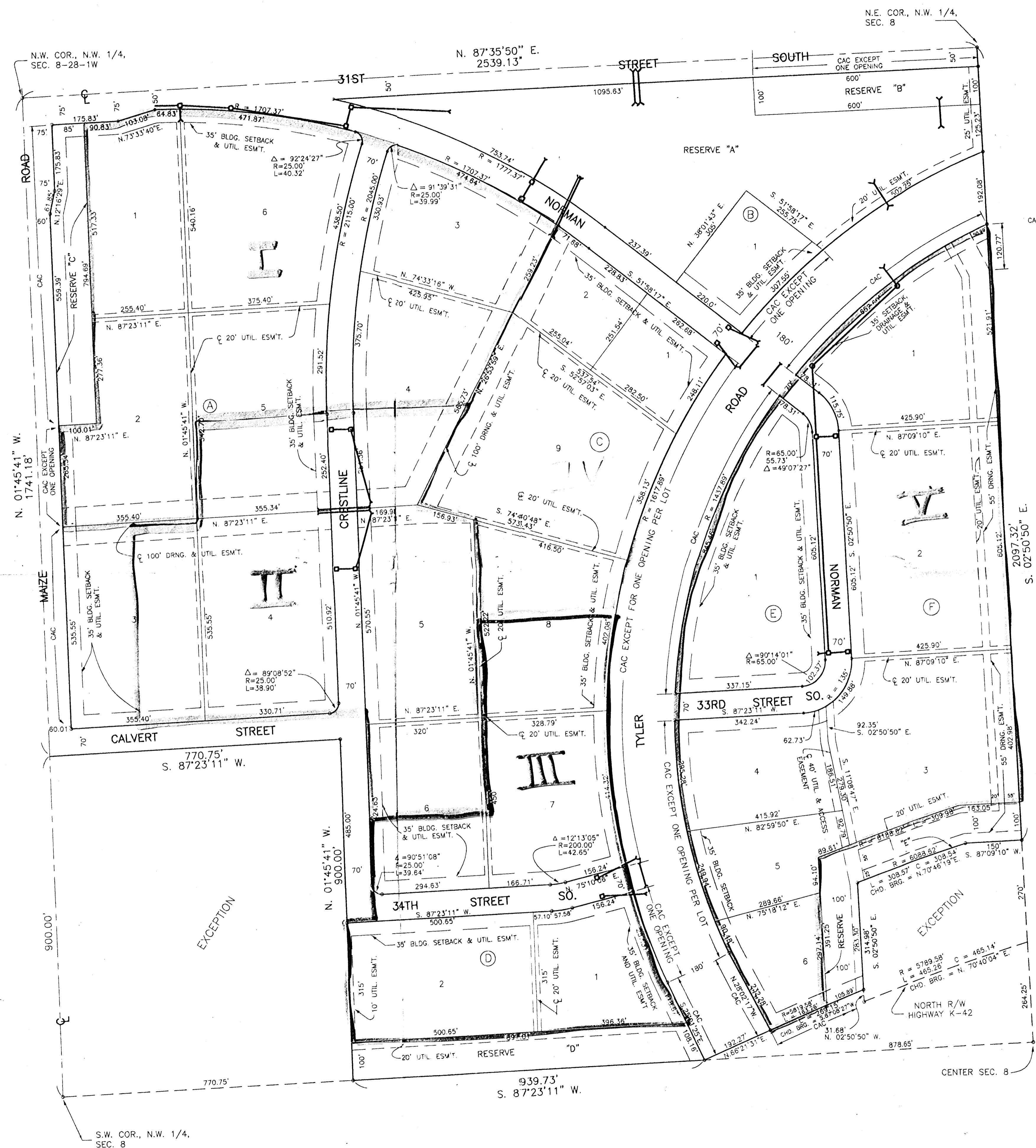


C:\SCL13\WORK\SKYFINAL.DWG



# SKYWAY INDUSTRIAL PARK

AN ADDITION TO WICHITA, SEDGWICK COUNTY, KANSAS

1" = 150'  
 ○ = 3/4" IRON (CAPPED)  
 CAC = COMPLETE ACCESS CONTROL

STATE OF KANSAS, COUNTY OF SEDGWICK, SS:

I, Craig Moehring, a Registered Land Surveyor in said State and County, do hereby certify that I have surveyed and platted "SKYWAY INDUSTRIAL PARK", an Addition to Wichita, Sedgwick County, Kansas, into Lots, Blocks, Streets and Reserves, the same being accurately set forth on the accompanying plat and described as the Northwest Quarter of Section 8, Township 28 South, Range 1 West of the 6th P.M., Sedgwick County, Kansas, EXCEPT therefrom a tract described as beginning at the intersection of the East line of the Northwest Quarter of said Section 8 and the North right-of-way line of K-42 Highway, thence North along the East line of said Northwest Quarter, a distance of 270 feet; thence West at right angles a distance of 150 feet; thence Southwesterly parallel to the North right-of-way line of K-42 Highway, a distance of 310.11 feet; thence South parallel with the East line of said Northwest Quarter, a distance of 310 feet to the North line of K-42 Highway right-of-way; thence Northeastly along the North line of said K-42 Highway right-of-way, to the place of beginning, and also EXCEPT Lots 1 & 2, Block 1, Dugan Industrial Third Addition, Sedgwick County, Kansas, and also EXCEPT that part of said Northwest Quarter lying South of the North right of way line of K-42 Highway.

This plat of "SKYWAY INDUSTRIAL PARK" has been submitted to and approved by the Wichita-Sedgwick County Metropolitan Area Planning Commission.

Dated this \_\_\_\_ day of \_\_\_\_\_, 1998.

WICHITA-SEDGWICK COUNTY METROPOLITAN AREA PLANNING COMMISSION

Richard E. Lopez, Chairman

Marvin S. Krout, Secretary

This plat has been approved and all dedications shown hereon, if any accepted by the City Council of the City of Wichita, Kansas, this \_\_\_\_ day of \_\_\_\_\_, 1998.

Bob Knight, Mayor

Pat Burnett, City Clerk

STATE OF KANSAS, COUNTY OF SEDGWICK, SS:

This is to certify that this instrument was filed for record in the Register of Deeds Office at \_\_\_\_\_ on the \_\_\_\_ day of \_\_\_\_\_, 1998.

Bill Meeks, Register of Deeds

\_\_\_\_\_, Deputy

Entered on transfer record this \_\_\_\_ day of \_\_\_\_\_, 1998.

James Alfard, County Clerk

Craig Moehring, L.S. # 875

Know all men by these presents that we, the undersigned, owners of the land as above set forth in the Surveyor's Certificate, have caused the same to be surveyed and platted into Lots, Blocks, Streets and Reserves, to be known as "SKYWAY INDUSTRIAL PARK", an Addition to Wichita, Sedgwick County, Kansas. The Streets are hereby dedicated to and for the use of the public. Easements for the construction and maintenance of public utilities and drainage, as indicated on the accompanying plat, are hereby granted. Reserves A, B, & E are for detention, drainage, landscaping, irrigation and utilities confined to easements. Reserves C & D are for landscaping, irrigation and utilities confined to easements. The Reserves shall be owned and maintained by one or more Associations to be formed within "SKYWAY INDUSTRIAL PARK", an Addition to Wichita, Sedgwick County, Kansas. All abutter's rights of access to and from Tyler Road and K-42 Highway are hereby granted to the City of Wichita, provided however that Lot 1, Block B; Lots 1, 7, B and 9, Block C; the North 257.31' of Lot 1, Block D; Lots 4, 5 and the North 90.48' of Lot 6, Block F shall each have one opening to Tyler Road at such location as approved by the City Engineer. All abutter's rights of access over and across the East line of Maize Road, and to or from 31st St. S., over and across the North line of Reserve B, Block B, are hereby granted to the City of Wichita, provided however that Lot 2, Block A shall have one opening to Maize Road, and Reserve B, Block B shall have one opening to 31st St. S., at such location as approved by the City Engineer.

JOHN E. DUGAN FAMILY PARTNERSHIP LP

John E. Dugan, General Partner

STATE OF KANSAS, COUNTY OF SEDGWICK, SS:

Be it remembered that on this \_\_\_\_ day of \_\_\_\_\_, 1998, before me a Notary Public in and for said State and County, came John E. Dugan Family Partnership, LP, by John E. Dugan, to me personally known to be the same person who executed the foregoing instrument of writing and duly acknowledged the execution of the same on behalf of and as the act and deed of said partnership. In testimony whereof I have hereunto set my hand and affixed my Notarial Seal the day and year above written.

\_\_\_\_\_, Notary Public

My Commission Expires \_\_\_\_\_

STORM WATER SEWER

S.W. COR., N.W. 1/4, SEC. 8

N.E. COR., N.W. 1/4, SEC. 8

N.W. COR., N.W. 1/4, SEC. 8-28-1W

N. 87°35'50" E. 2539.13'

N. 01°45'41" W. 1741.18'

N. 01°45'41" W. 900.00'

S.W. COR., N.W. 1/4, SEC. 8

939.73' S. 87°23'11" W.

CENTER SEC. 8

S. 02°50'50" E. 2097.32'