

PRELIMINARY PLAT
OF
SKYWAY INDUSTRIAL PARK
AN ADDITION TO SEDGWICK COUNTY, KANSAS

1" = 150'

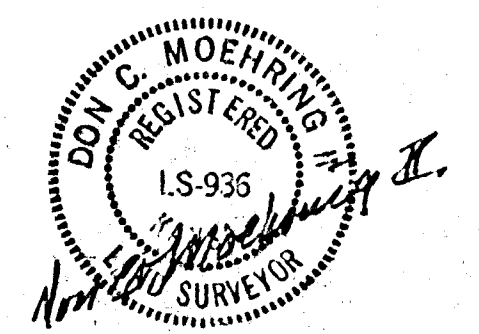
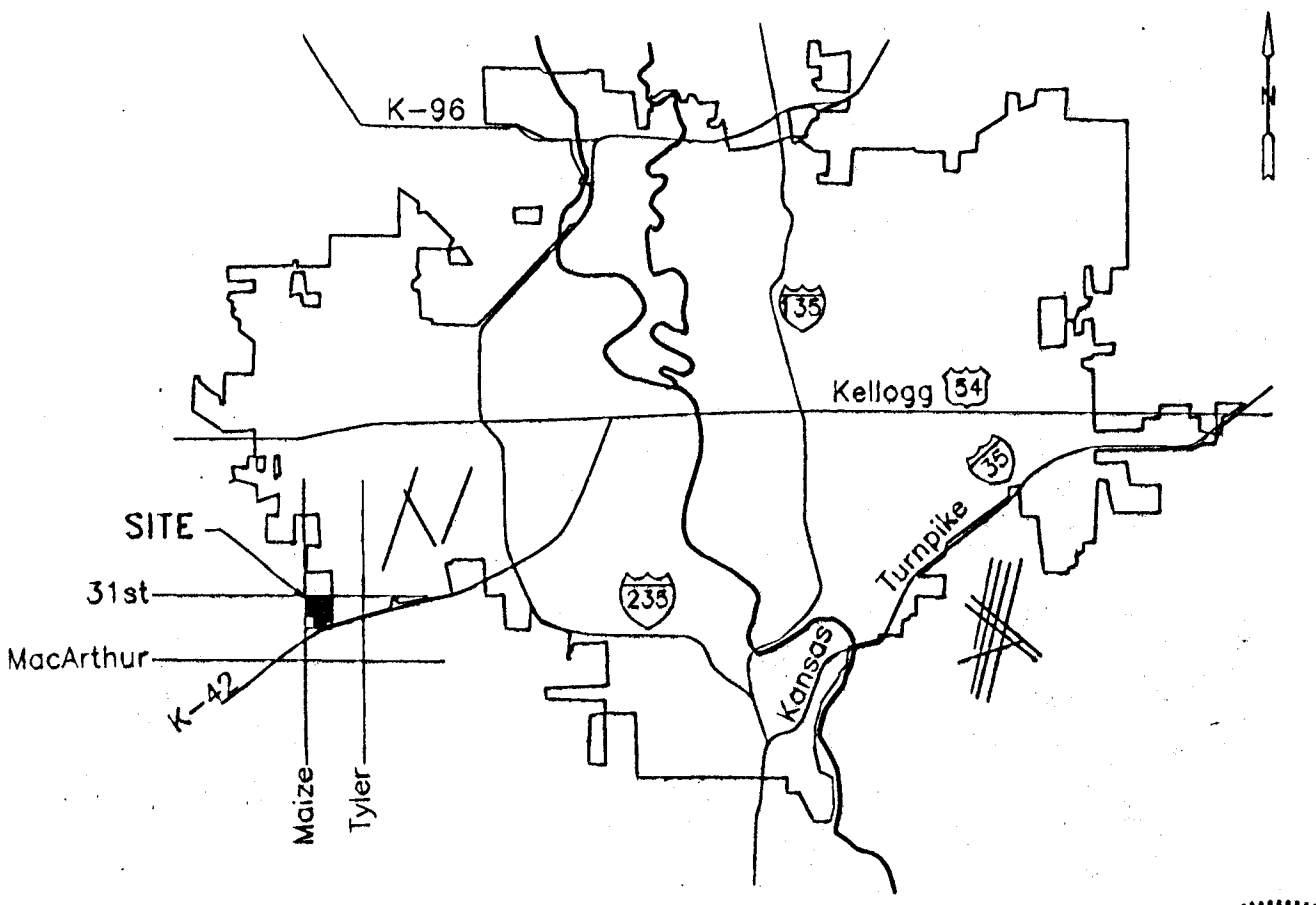
- LEGEND**
- OE = OVERHEAD ELECTRIC
 - UT = UNDERGROUND TELEPHONE
 - UP = UTILITY POLE
 - WV = WATER VALVE
 - UE = UTILITY EASEMENT
 - CAC = COMPLETE ACCESS CONTROL

LEGAL DESCRIPTION

THE NORTHWEST QUARTER OF SECTION 8, TOWNSHIP 28 SOUTH, RANGE 1 WEST OF THE 6TH P.M., SEDGWICK COUNTY, KANSAS, EXCEPT THEREFROM A TRACT DESCRIBED AS BEGINNING AT THE INTERSECTION OF THE EAST LINE OF THE NORTHWEST QUARTER OF SAID SECTION 8 AND THE NORTH RIGHT-OF-WAY LINE OF K-42 HIGHWAY; THENCE NORTH ALONG THE EAST LINE OF SAID NORTHWEST QUARTER, A DISTANCE OF 270 FEET; THENCE WEST AT RIGHT ANGLES A DISTANCE OF 150 FEET; THENCE SOUTHWESTERLY PARALLEL TO THE NORTH RIGHT-OF-WAY LINE OF K-42 HIGHWAY, A DISTANCE OF 310 FEET; THENCE SOUTH PARALLEL WITH THE EAST LINE OF SAID NORTHWEST QUARTER, A DISTANCE OF 310 FEET TO THE NORTH LINE OF SAID K-42 HIGHWAY RIGHT-OF-WAY; THENCE NORTHEASTERLY ALONG THE NORTH LINE OF SAID K-42 HIGHWAY RIGHT-OF-WAY, TO THE PLACE OF BEGINNING, AND ALSO EXCEPT LOTS 1 AND 2, BLOCK 1, DUGAN INDUSTRIAL THIRD ADDITION, SEDGWICK COUNTY, KANSAS, AND ALSO EXCEPT THEREFROM K-42 HIGHWAY RIGHT-OF-WAY.

NOTE

RESERVE "A" IS FOR DETENTION, DRAINAGE, LANDSCAPING, IRRIGATION AND UTILITIES CONFINED TO EASEMENTS.
RESERVES "B", "C" AND "D" ARE FOR LANDSCAPING, IRRIGATION AND UTILITIES CONFINED TO EASEMENTS.



MOEHRING & ASSOCIATES
CONSULTING ENGINEERS - SURVEYORS
433 S. HYDRAULIC WICHITA, KS.
(316) 263-8291

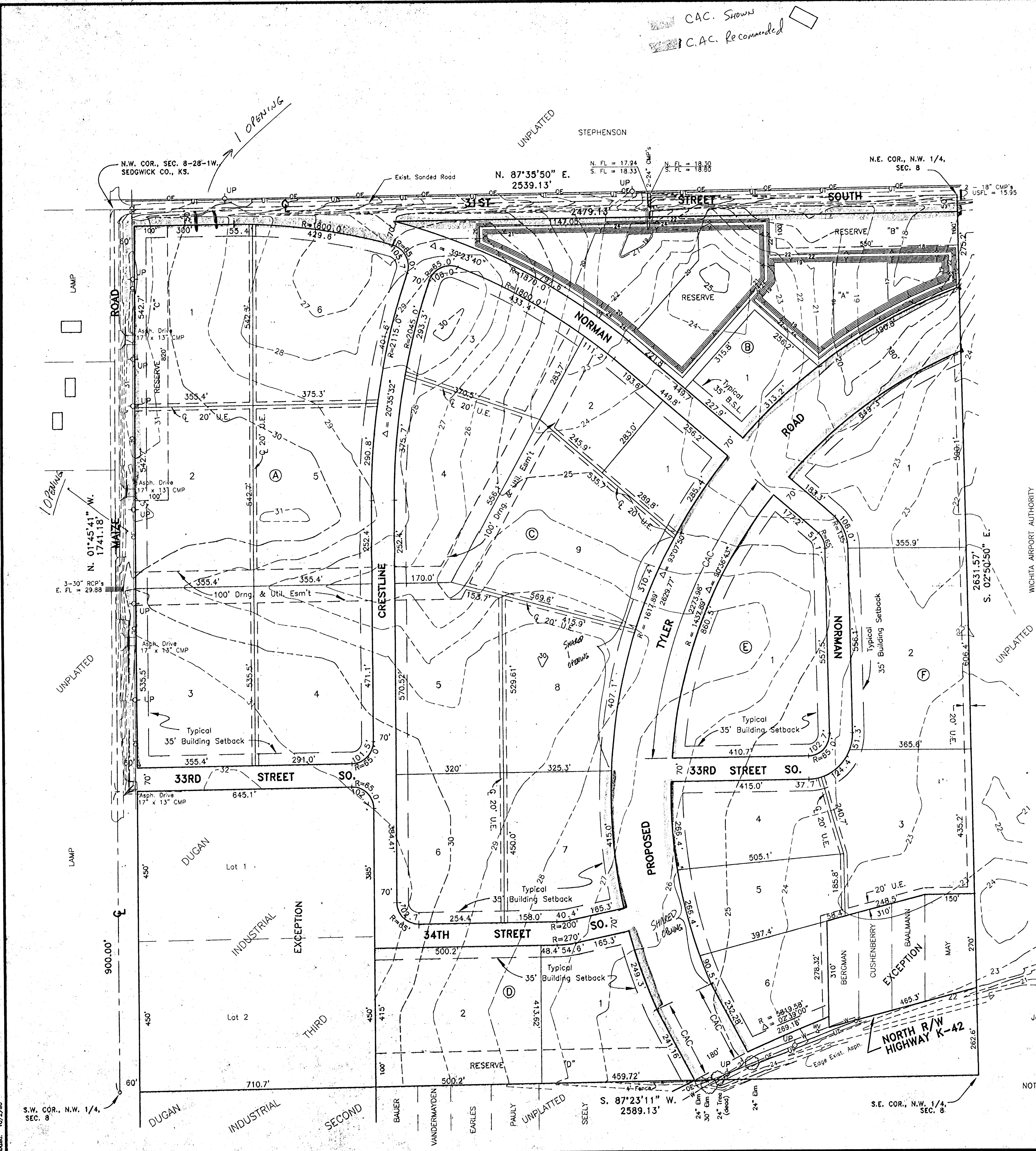
OWNER

John E. Dugan Family Partnership, L.P.

BENCHMARK

1. RR Spike in Hedge Tree, 450' S. of NE Cor., NW 1/4, Sec. 8. Elev = 1325.05 M.S.L.
2. Brass Disc in conc. base, 50' E. and 30' S. of NE Cor., NW 1/4, Sec. 8. Elev = 1317.59 M.S.L.

NOTE: Add 1300.00 to Contour Elevations to convert to M.S.L.
Date of Topography: June 1996



John E. Dugan, Prep-Plat (DUGAN) 10/27/96