

DESCRIPTION:

The East 2/3's of lots 1, 2 and 3; Block No. 11, Fruitvale Park Addition to the City of Wichita, Sedgwick County, Kansas.
 and
 The West 1/3's of lots 1, 2 and 3; Block No. 11, Fruitvale Park Addition to the City of Wichita, Sedgwick County, Kansas.
 and
 Lot 1, Eck 2nd Addition to the City of Wichita, Sedgwick County, Kansas.

The Undersigned hereby certifies that the Survey information as shown hereon was obtained by field methods and investigations under his direction and supervision, and that all information as shown hereon is correct to the best of his knowledge and belief.



A. J. Oakes, Kansas LS-953

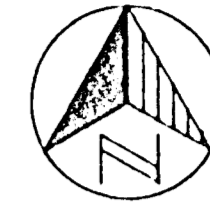
SKETCH PLAT

ECK 4TH ADDITION

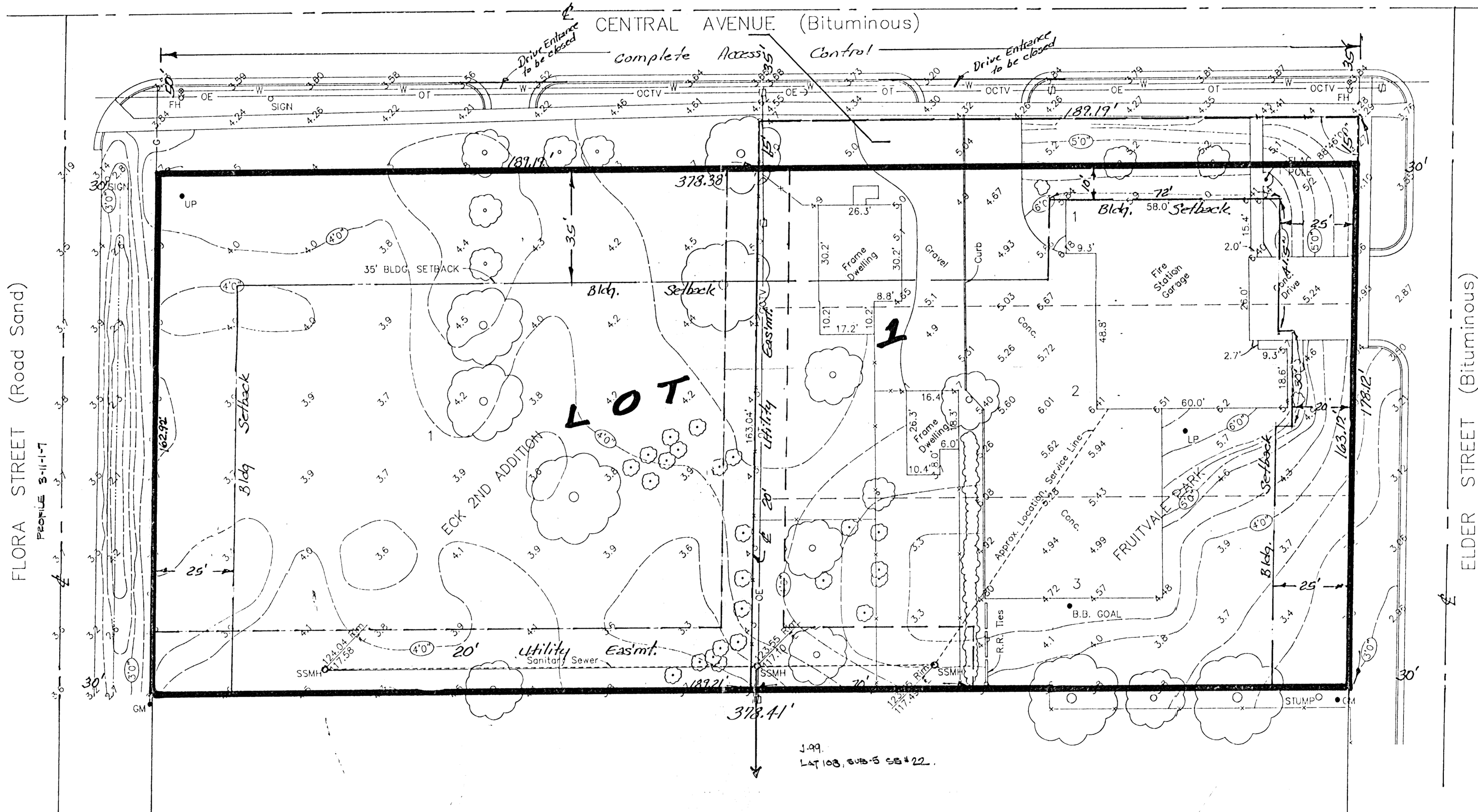
Killingworth

WICHITA, SEDGWICK COUNTY, KANSAS

CITY OF WICHITA



LEGEND
 • Property Cor. Set
 ○ Property Cor. Fnd.



GENERAL NOTES:

- All hard surfaced elevation are shown to (2) decimal places.
- Correction to Sea Level Elevation = City Datum + 1310.69.
- Utilities shown hereon were determined by field methods and investigations and have not been verified by Utility Owners.
- Contour interval is 0'-4".
- Spot elevations are in feet and decimals of a foot and are on City Datum.

Reference BM, City of Wichita BM Disk Hoover/Central, 34' East, 42' North of C. Int. Elevation - City Datum = 123.29

BM-1 Step Spk. in Power Pole @ N.E. Cor. of Lot 1, Eck 2nd Addition Elevation - City Datum = 126.30

BM-2 "M" in Mueller FH located at S.W. Cor. of Central/Elder Elevation - City Datum = 126.32

SKETCH PLAT 28 DEC 1990
BAUGHMAN COMPANY, P.A.
 SURVEYING & ENGINEERING
 316262-7271 • 315 ELLIS • WICHITA, KANSAS 67211

GARRY E. SMITH
 ENGINEERS/SURVEYORS
 107 N. SUMMIT - P.O. BOX 696 - ARKANSAS CITY, KS 67205 - (316) 442-4756
 DATE: 10/23/90 PROJ.#: 10-406-031 SCALE: 1"=20' SHEET: 1 OF 1 DRAWN: EOR
 ARCHITECTURAL SURVEY
FIRE STATION NUMBER 8
 Wichita, Sedgwick County, Kansas