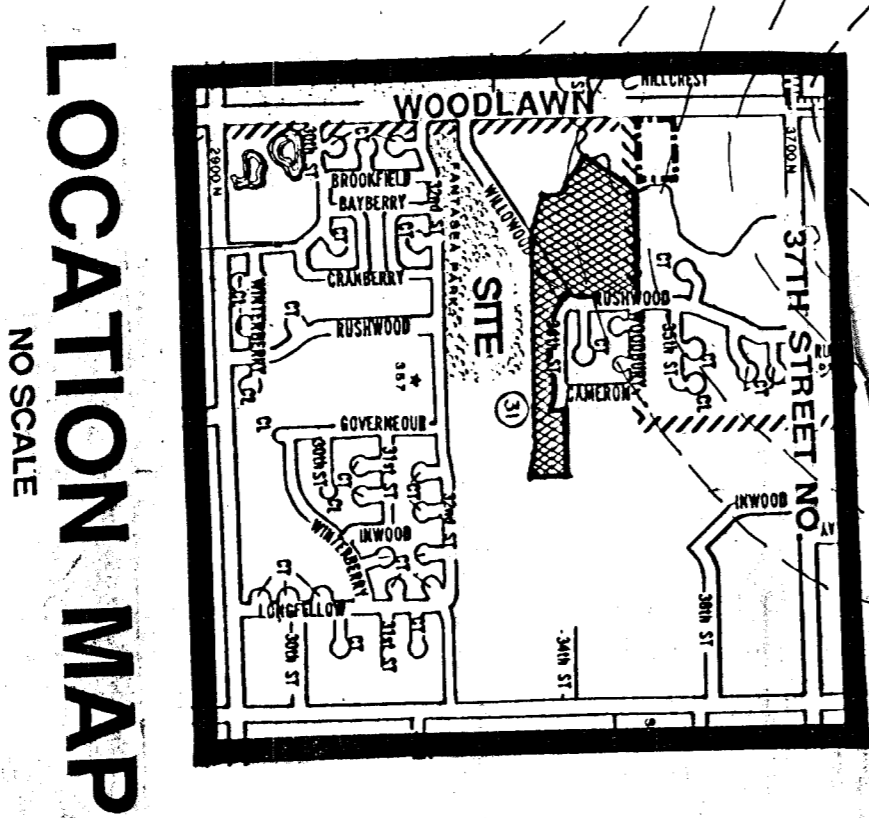


PRELIMINARY PLAT

KILLARNEY WEST RESIDENTIAL

OWNER: WOODLAWN DEVELOPMENT CO. 224 E. DOUGLASS SUITE 300 WICHITA, KANSAS 67202 PH: (316) 263-3791

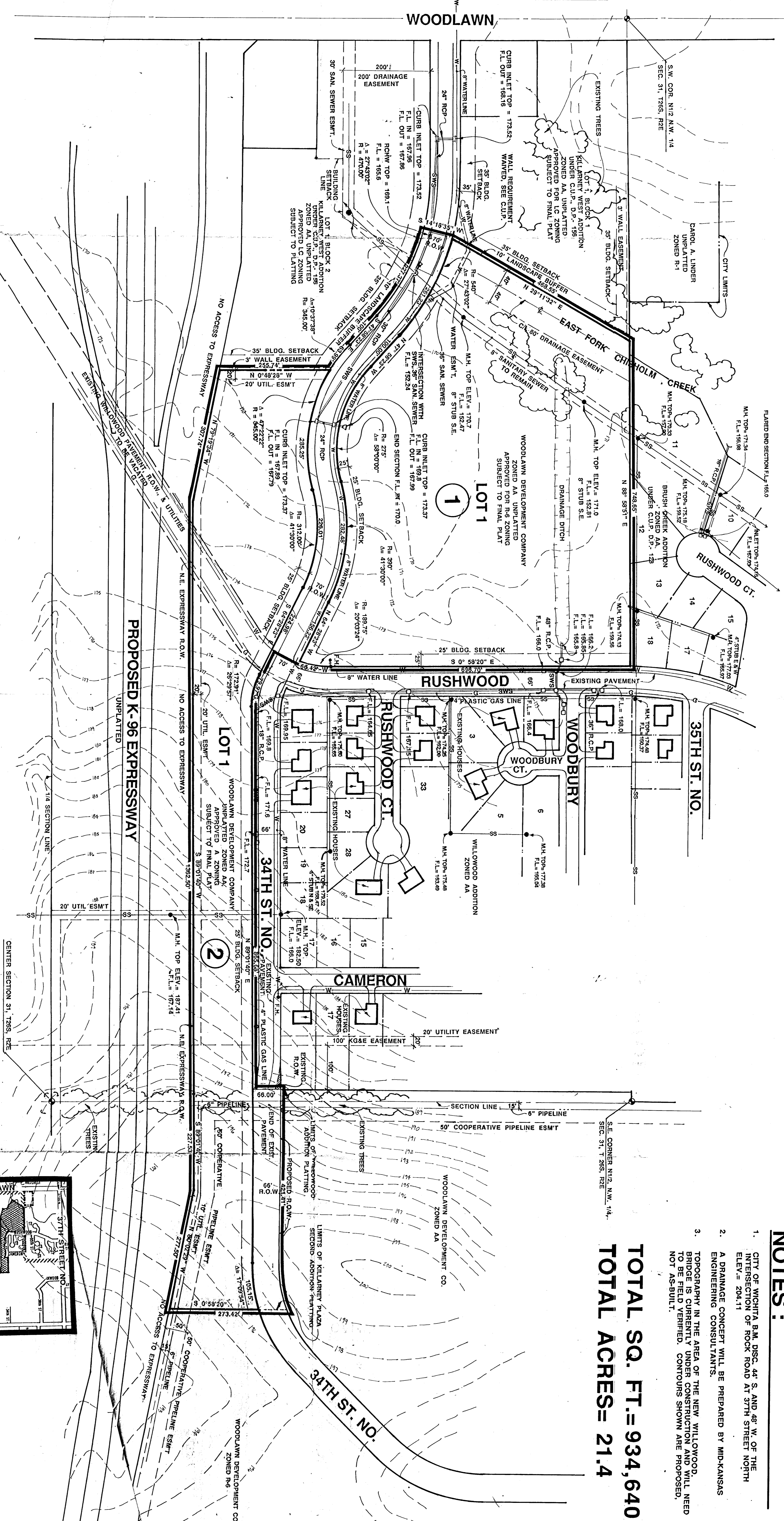
DATE: MAY 4, 1999



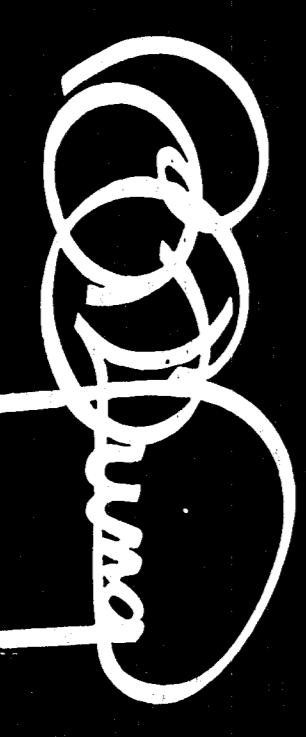
LOCATION MAP
NO SCALE

SCALE: 1" = 100'-0"
CONTOUR INTERVAL = 1'

N
W
S
E



- NOTES:**
1. CITY OF WICHITA, B.M. DISC. 44, S. AND 48" W. OF THE INTERSECTION OF 1835 N. ROAD AT 9TH STREET NORTH ELEV. = 204.11
 2. A DRAINAGE CONCEPT WILL BE PREPARED BY MID-KANSAS ENGINEERING CONSULTANTS.
 3. TOPOGRAPHY IN THE AREA OF THE NEW WILLOWOOD BRIDGE IS CURRENTLY UNDER CONSTRUCTION AND WILL NEED TO BE DETERMINED. CONTOURS SHOWN ARE PROPOSED, NOT AS-BUILT.
- TOTAL SQ. FT. = 934,640.89**
TOTAL ACRES = 21.4



BILL G. YUNG DESIGN
4912 E. 29TH STREET NORTH WICHITA, KS 67220 316-863-5567