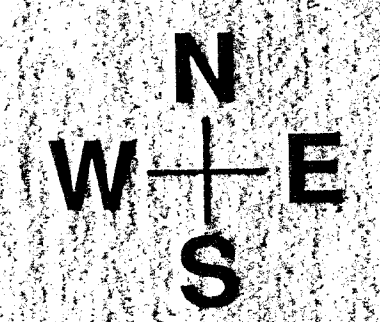
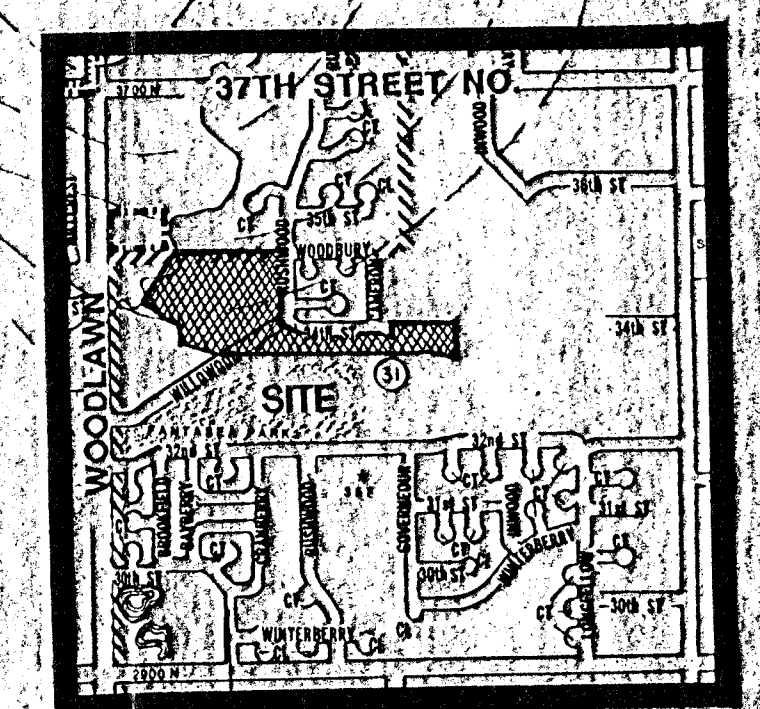
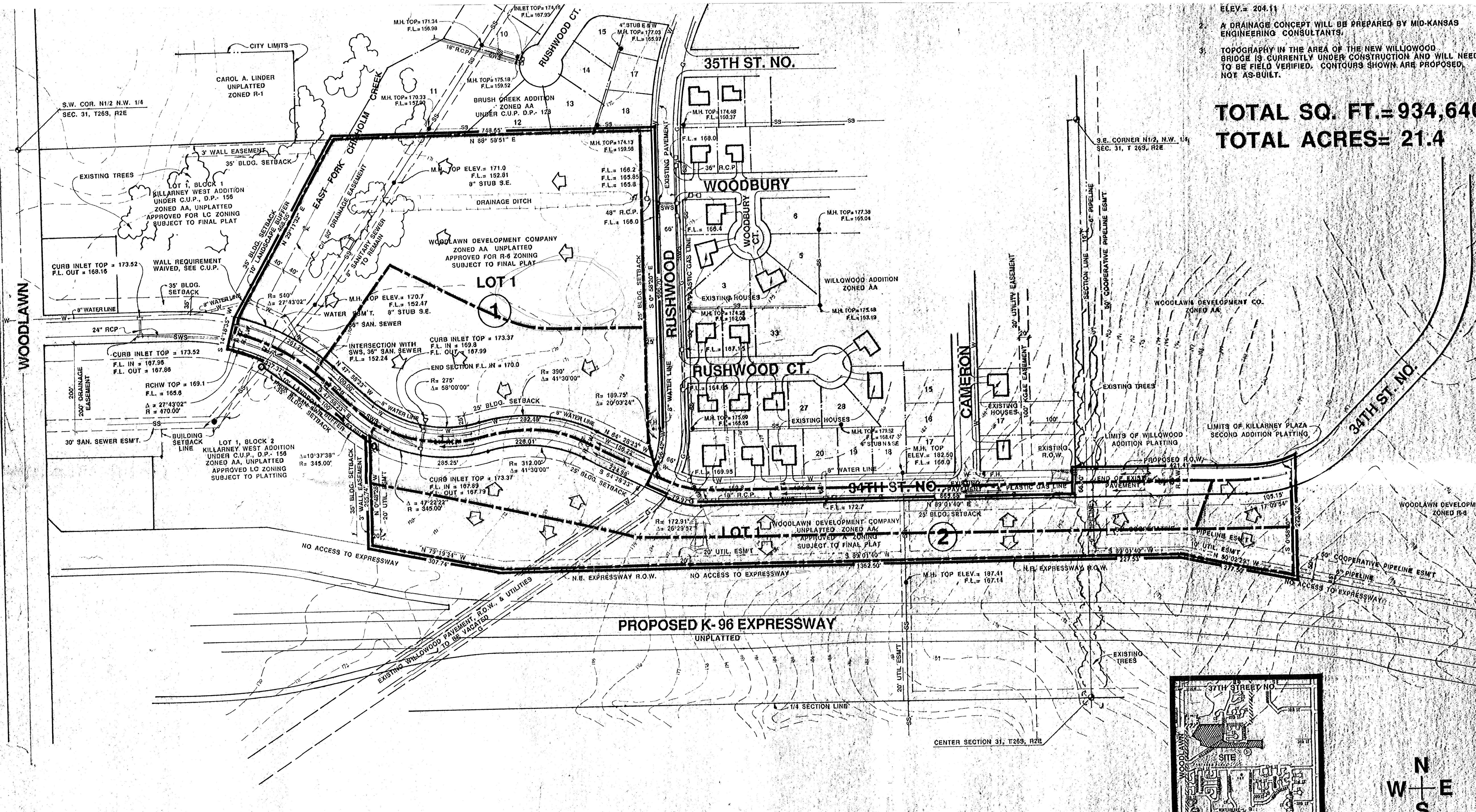


- ELEV. = 204.11
- A DRAINAGE CONCEPT WILL BE PREPARED BY MID-KANSAS ENGINEERING CONSULTANTS.
- TOPOGRAPHY IN THE AREA OF THE NEW WILLOWOOD BRIDGE IS CURRENTLY UNDER CONSTRUCTION AND WILL NEED TO BE FIELD VERIFIED. CONTOURS SHOWN ARE PROPOSED, NOT AS-BUILT.

TOTAL SQ. FT. = 934,640
TOTAL ACRES = 21.4



SCALE: 1" = 100'-0"
 CONTOUR INTERVAL = 1'

DRAINAGE & UTILITY CONCEPT

KILLARNEY WEST RESIDENTIAL

LOCATION MAP
 NO SCALE

