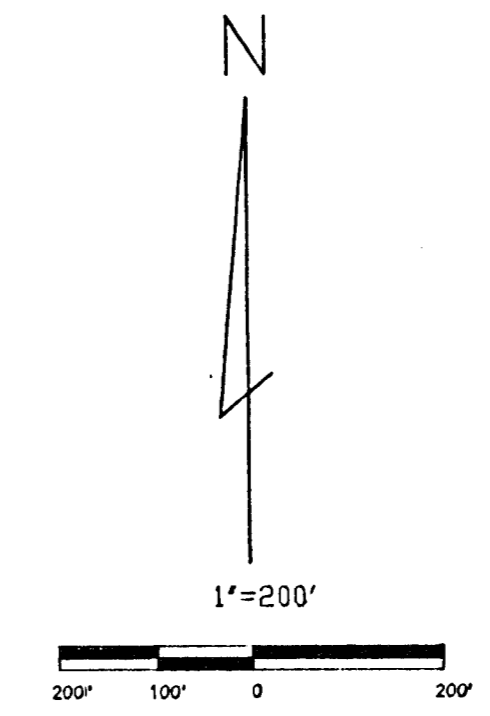
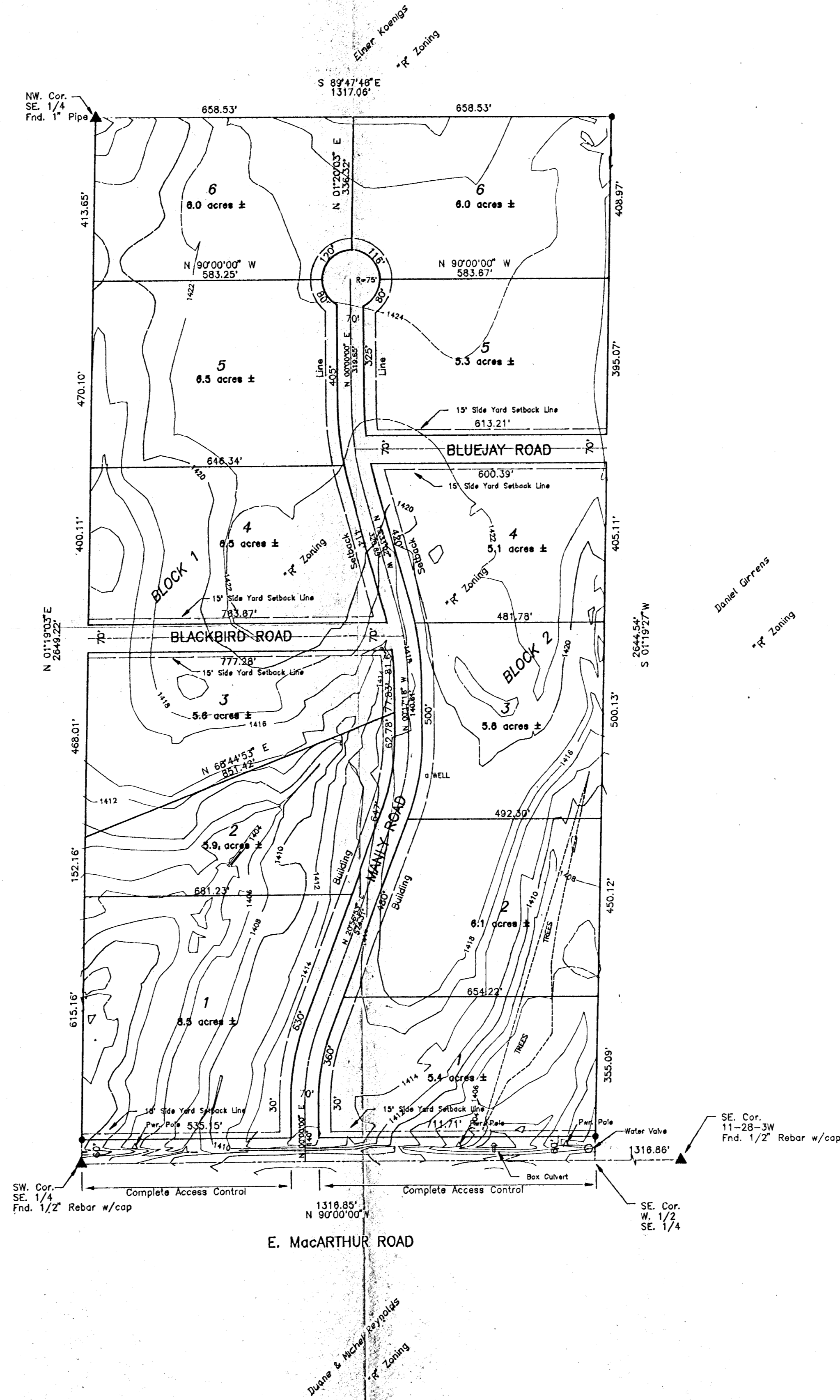


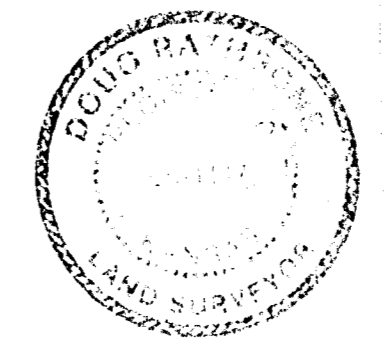
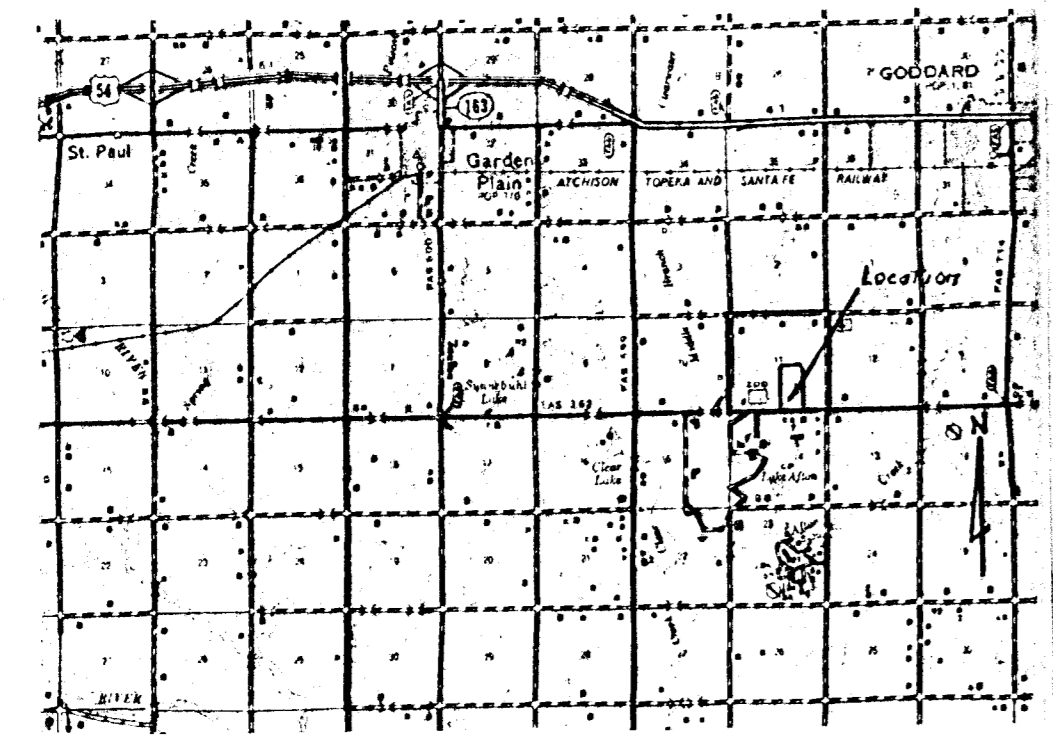
PRELIMINARY PLAT  
**MEADOWLARK ESTATES ADDITION**  
 W. 1/2, SE. 1/4, SECTION 11, TOWNSHIP 28 SOUTH, RANGE 3 WEST  
 OF THE SIXTH P.M., SEDGWICK COUNTY, KANSAS



• Set 1/2" Rebar

BM: RR Spike in Power Pole  
 140' NE. of SW. Cor. of SE. 1/4.  
 Elev. = 1408.08

Total No. of Lots = 12



OWNER / SUBDIVIDER  
 TMB Land Company Inc.  
 P.O. Box 155  
 Wichita, KS 67025  
 (316) 297-3631

Water by Private Wells  
 Sewer by Private Lagoons

**LAND MEASUREMENT INC.**  
 200 E. FOURTH  
 NEWTON, KANSAS 67114  
 316-283-7000

PROJECT NO. 991266 5/10/95