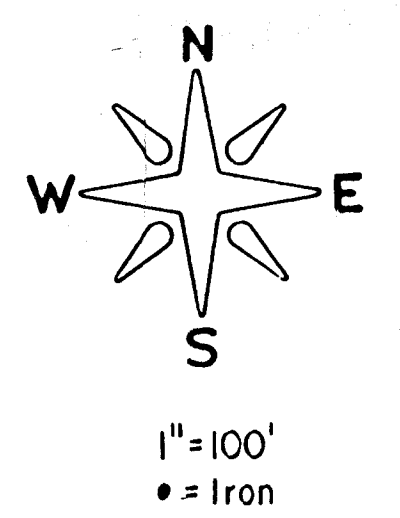
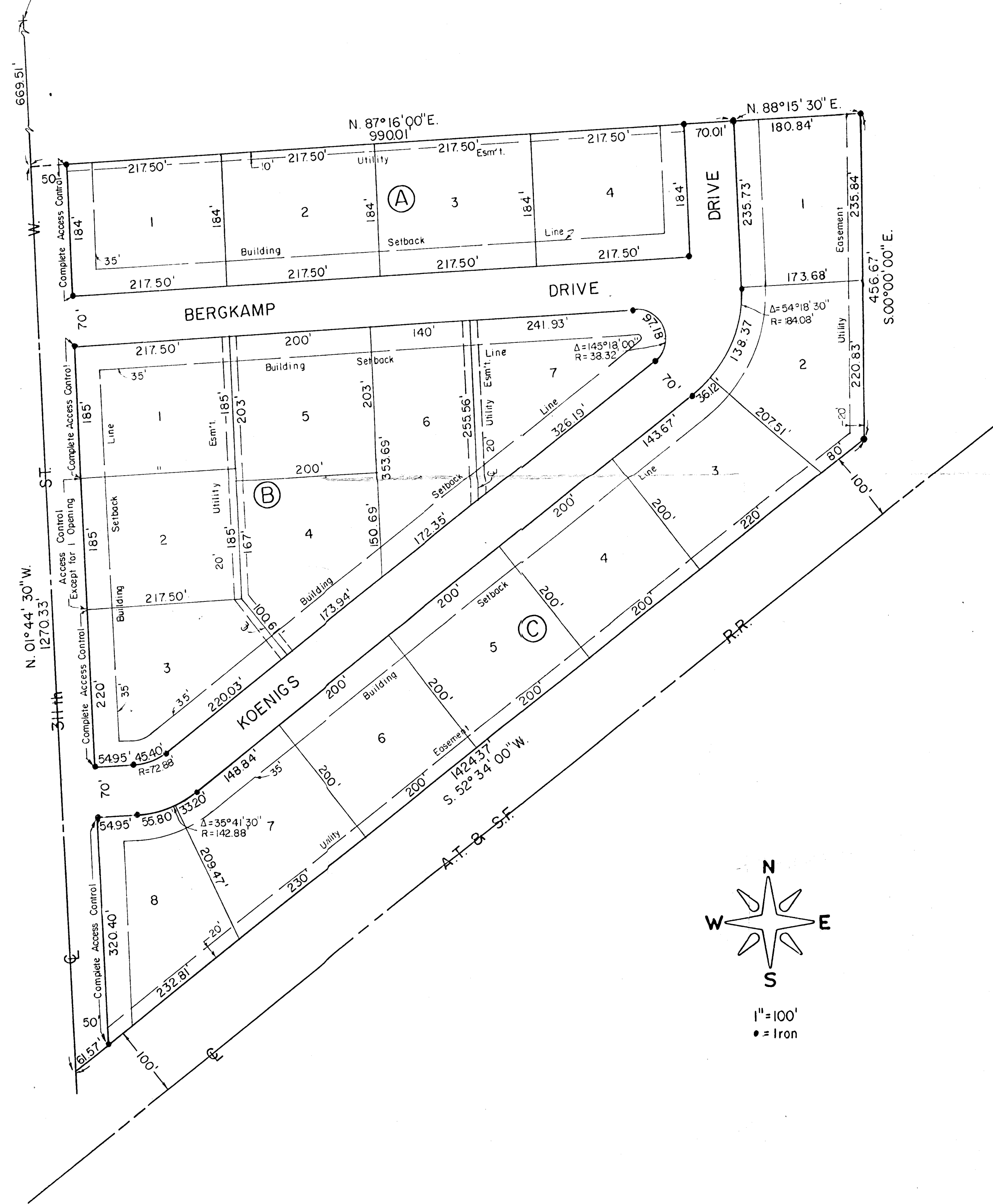


# MEADOWLARK HILLS SECOND ADDITION

TO SEDGWICK COUNTY, KANSAS

N.W. Cor. S.W. 1/4, Sec 31,  
T.27S, R.3W., of the 6th PM.



STATE OF KANSAS, COUNTY OF SEDGWICK, SS:

I, Don C. Moehring II, a Civil Engineer in said State and County, do hereby certify that I have surveyed and platted "MEADOWLARK HILLS SECOND ADDITION" to Sedgwick County, Kansas, into Lots, Blocks, and Streets the same being accurately set forth on the accompanying plat and described as follows: beginning at a point in the West line of Sec.31, T27S, R3W, of the 6th P.M., Sedgwick County, Kansas and 669.51' South of the NW Corner of the SW 1/4 of said Sec. 31; thence N. 87°16'00" E. a distance of 990.01'; thence N. 88°15'30" E., a distance of 180.84'; thence S. 00°00'00" E., a distance of 456.67' to a point in the Northerly line of the AT & SF Railroad Right-of-Way; thence S. 52°34'00" W. along the Northerly line of said Railroad Right-of-Way a distance of 1424.37' to a point in the West line of said SW 1/4 of Sec. 31; thence N. 01°44'30" W., a distance of 1270.33' to the point of beginning.

Don C. Moehring II Consulting Engineer

Know all men by these presents that we the undersigned, property owners of the land as above set forth in the Civil Engineer's certificate, have caused the same to be surveyed and platted into Lots, Blocks, and Streets, the same to be known as "MEADOWLARK HILLS SECOND ADDITION" to Sedgwick County, Kansas. Easements for the construction and maintenance of public utilities, as indicated on the accompanying plat, are hereby granted. The Streets are hereby dedicated to and for the use of the Public. All abutter's rights of access to or from 311th Street West over and across the West line of Lot 1, Block A, Lots 1, 2, and 3, Block B, Lot 3, Block C, are hereby granted to the appropriate Governing Body, provided, however, that Lot 2, Block B, shall have access at one location, to be determined by the appropriate governing body.

TRIPLE K DEVELOPERS, INC.

Leo M. Koenigs, President

Raymond Kraus, Secretary

STATE OF KANSAS, COUNTY OF SEDGWICK, SS:

Be it remembered that on the \_\_\_\_\_ day of \_\_\_\_\_, 1979, before me, a Notary Public in and for said State and County came Triple K Developers, Inc. by Leo M Koenigs, President, and Raymond Kraus, Secretary, to me personally known to be the same persons who executed the foregoing instrument of writing and duly acknowledged the execution of the same. In testimony whereof I have hereunto set my hand and affixed my notarial seal the day and year above written.

\_\_\_\_\_, Notary Public

My Commission Expires \_\_\_\_\_

This plat of "MEADOWLARK HILLS SECOND ADDITION" to Sedgwick County, Kansas, has been submitted to and approved by the Wichita-Sedgwick County Metropolitan Area Planning Commission.

Dated this \_\_\_\_\_ day of \_\_\_\_\_, 1979.

WICHITA - SEDGWICK COUNTY METROPOLITAN AREA PLANNING COMMISSION.

\_\_\_\_\_, Chairman

\_\_\_\_\_, Secretary

Don C. Moehring II Consulting Engineer

This plat has been approved and all dedications shown hereon, if any, accepted by the Board of County Commissioners of Sedgwick County, Kansas, this \_\_\_\_\_ day of \_\_\_\_\_, 1979.

\_\_\_\_\_, Chairman

\_\_\_\_\_, Commissioner

\_\_\_\_\_, Commissioner

Attest: \_\_\_\_\_, County Clerk

STATE OF KANSAS, COUNTY OF SEDGWICK, SS:

This is to certify that this instrument was filed for record in the Register of Deeds Office at \_\_\_\_\_ on the \_\_\_\_\_, 1979.

\_\_\_\_\_, Register of Deeds

\_\_\_\_\_, Deputy

Entered on transfer record this \_\_\_\_\_ day of \_\_\_\_\_, 1979.

\_\_\_\_\_, County Clerk