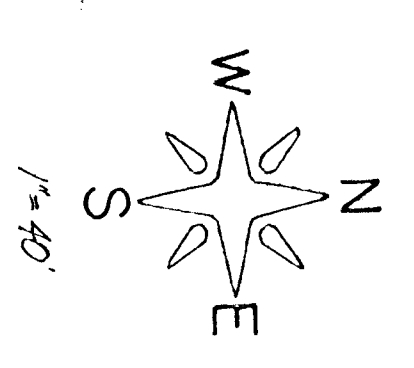
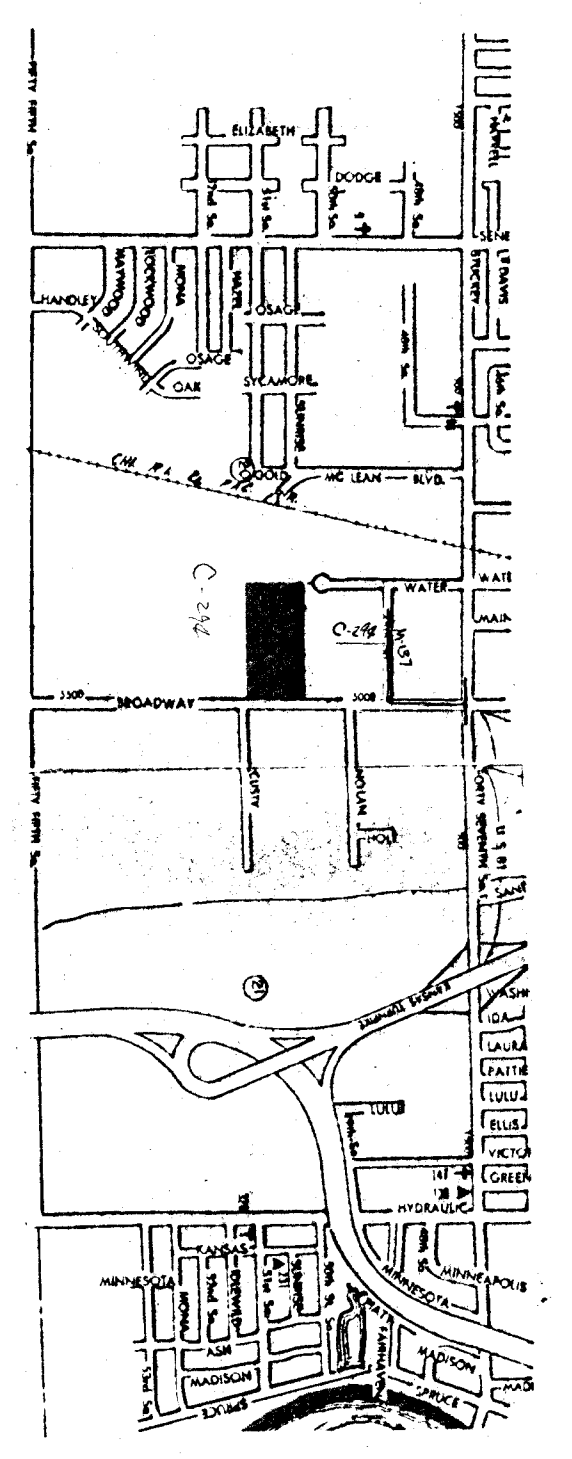
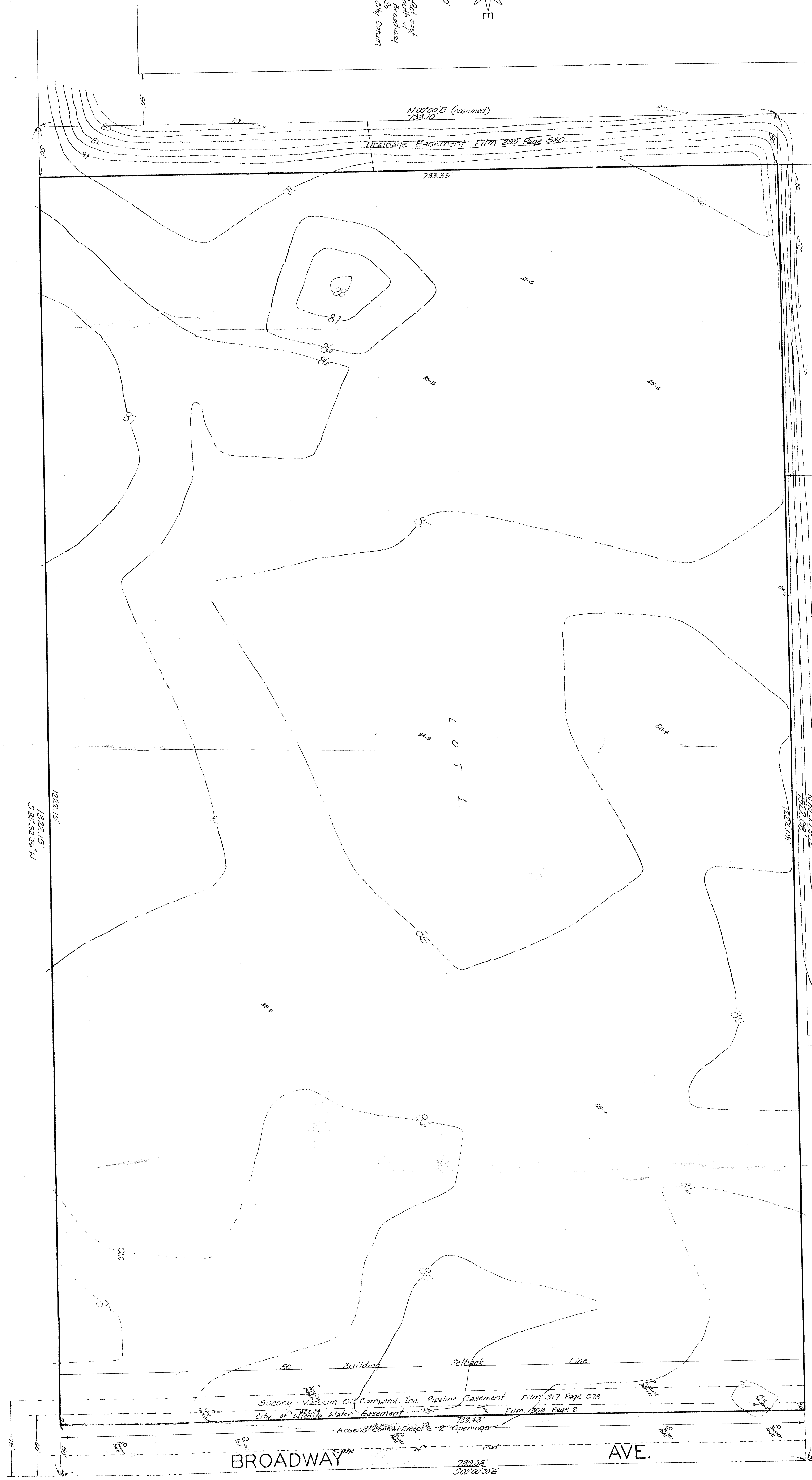


Bench mark:  
 City dist. 44 feet east  
 and 22 feet south of  
 centerlines of Broadway  
 and 55th St. S.  
 Elev. = 83.58 City Datum



WATER ST.

FIREBALL  
 65' FLOODWAY  
 ADDITION



Vicinity Plat  
1" = 1/2 mile

PRELIMINARY PLAT  
 MIDWAY SOUTHERN BAPTIST CHURCH ADDITION

THE E 1/2 OF THE NE 1/4 OF SEC. 20, T49R 28-S, R-1E  
 OF THE 6TH RM, SEOSAWICK COUNTY, KANSAS,  
 EXCEPT THE NORTH 1908 FEET THEREOF

OWNER: MIDWAY SOUTHERN BAPTIST CHURCH  
 BY LOY C. DEAKING, TRUSTEE

BROADWAY AVE.

BAUGHMAN COMPANY, P.A.  
 SURVEYING & ENGINEERING  
 3142 S. 27TH ST. • 201 WYANDOTT, MO.  
 WICHITA, KANSAS 67201