

$\Delta = 1357'40"$   
 $R = 211.00'$   
 $L = 51.41'$

$\Delta = 2955'36"$   
 $R = 371.08'$   
 $L = 193.82'$

$\Delta = 2452'35"$   
 $R = 1222.50'$   
 $L = 523.67'$

$\Delta = 2216'00"$   
 $R = 1342.85'$   
 $L = 521.87'$

$\Delta = 1810'31"$   
 $R = 4.50'$   
 $L = 12.65'$

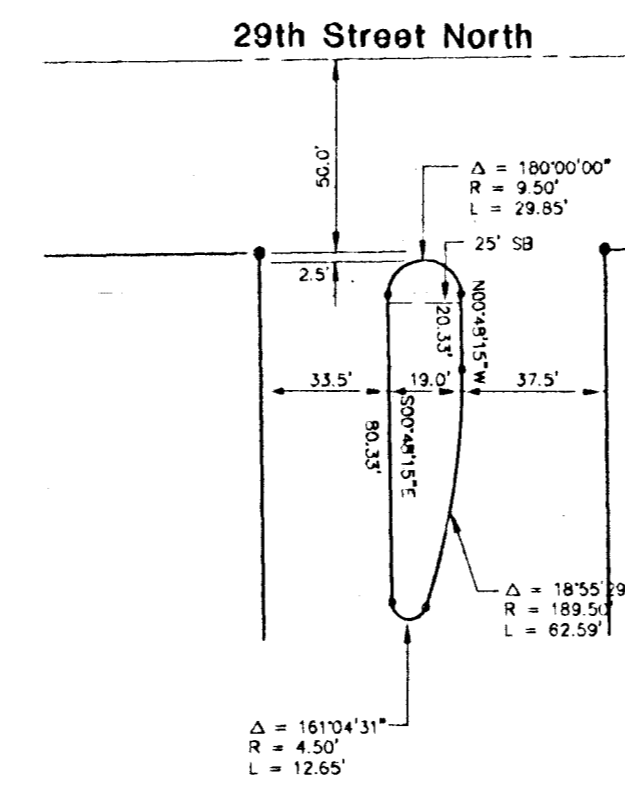
Scale 1" = 100'

Lot No.	Block	Minimum Low Opening
70-71	2	173.0
72-73	2	172.0
74-75	2	171.0
76-77	2	170.0
78-81	2	169.0
82-83	2	168.0
86-87	2	168.0
88-91	2	167.0
92-95	2	163.6
97-102	2	163.6
111-114	2	163.6
1	4	163.6

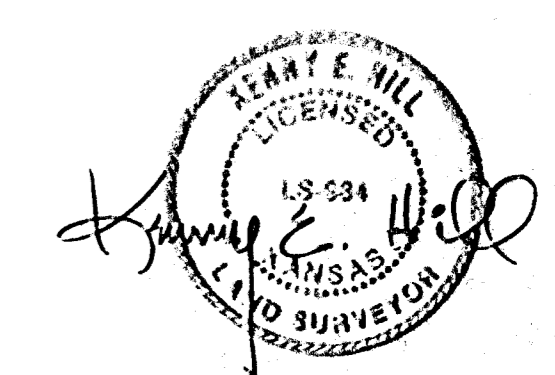
(Elevations are to City of Wichita Datum)

LINE	DIRECTION	DISTANCE
1	N00°41'55"W	137.05
2	S89°11'45"W	181.00
3	N00°41'55"W	217.60
4	S89°11'45"W	163.76
5	S89°11'45"W	236.13
6	N44°34'31"E	64.81
7	S45°25'29"E	111.67
8	N44°34'31"E	27.66
9	S45°25'29"E	75.72
10	S89°11'45"W	114.28
11	N44°34'31"E	110.00
12	S00°48'15"E	201.47
13	N00°43'38"W	13.00
14	N00°41'55"W	159.76
15	N00°41'55"W	187.06
16	S89°16'22"W	267.14
17	S89°16'22"W	309.53
18	S89°16'22"W	295.69
19	N00°41'55"W	193.78
20	S89°11'45"W	150.00
21	S89°11'45"W	246.49
22	S53°37'04"E	62.74
23	N00°41'55"W	484.05
24	N00°41'55"W	281.00

CURVE	RADIUS	LENGTH	TANGENT	CHORD	BEARING	DELTA
100	69.00'	108.26'	68.87'	97.49'	N44°14'55"E	89°53'40"
101	128.00'	201.30'	128.24'	181.19'	S45°45'05"E	90°06'20"
102	50.00'	252.29'	35.60'	58.00'	S89°18'05"W	289°05'56"
103	50.00'	252.29'	35.60'	58.00'	S89°18'05"W	289°05'56"
104	140.00'	110.69'	58.42'	107.83'	S89°04'34"W	45°18'09"
105	185.47'	29.12'	14.59'	29.09'	S03°48'00"W	08°59'50"
106	185.47'	117.43'	60.76'	115.48'	S26°26'13"W	56°16'36"
107	209.00'	96.57'	49.16'	95.72'	S58°39'44"E	26°28'29"
108	140.00'	110.88'	58.53'	108.01'	N21°53'08"E	45°22'46"
109	50.00'	251.34'	35.86'	58.28'	N23°42'22"E	288°42'23"
110	121.00'	89.07'	146.66'	87.07'	S20°23'27"W	42°10'34"
111	121.00'	100.94'	53.61'	98.04'	S69°22'30"W	47°47'43"
112	115.00'	106.22'	57.24'	102.48'	S27°09'30"E	52°55'09"
113	50.00'	252.29'	35.60'	58.00'	S00°43'38"E	289°05'56"
114	50.00'	162.63'	89.56'	99.85'	S87°32'45"E	186°21'46"
115	124.50'	102.30'	54.23'	99.44'	N67°11'19"W	47°04'38"
116	50.00'	252.29'	35.60'	58.00'	S00°48'15"E	289°05'56"
117	165.00'	107.09'	55.51'	105.22'	S72°12'40"E	37°11'11"
118	50.00'	252.29'	35.60'	58.00'	N00°48'15"W	289°05'56"
119	73.62'	107.46'	65.86'	98.17'	S47°27'15"N	83°38'14"



**BENCH MARKS:**  
 BM # 1  
 City of Wichita Bench Mark Disc, 5.5' E. and 37' N.  
 of N1/4 Corner Sec. 1-27-1E  
 Elev. 172.38  
  
 BM # 2  
 NW Corner Concrete Gutter on Beacon Hill Road Median  
 at 29th Street North  
 Elev. 162.99  
 (City of Wichita Datum)



# MEADOW OAKS ADDITION

## TO WICHITA, SEDGWICK COUNTY, KANSAS

X:\PROJECTS\12527\12527.DWG: 10/1/2010 10:56:46 AM