

UNPLATTED

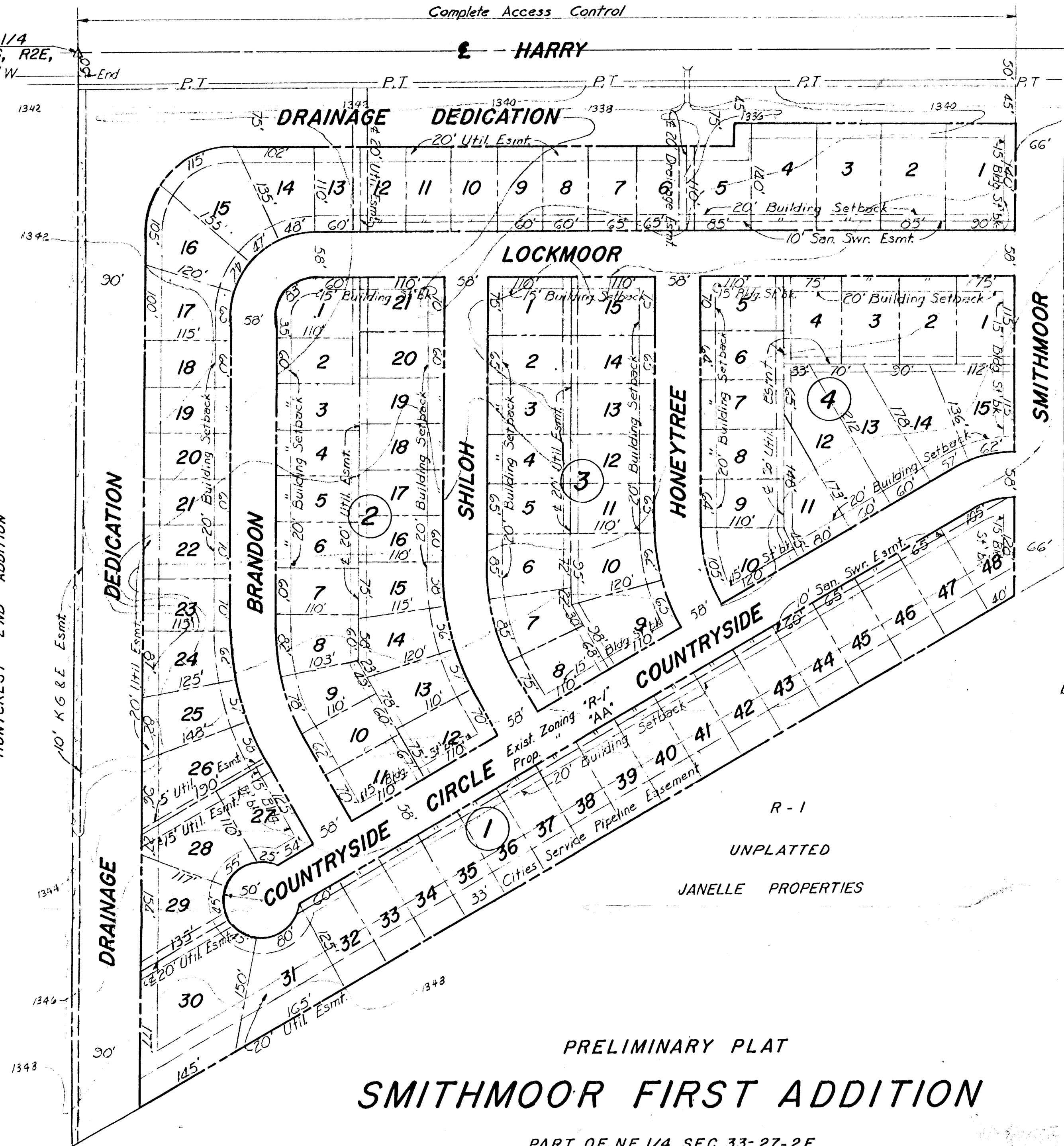
Complete Access Control

NW Cor. NE 1/4  
Sec. 33, T27S, R2E,  
of 6th P.M. 1/4 W.  
16" W. Water Main  
(City of Wichita)

Power 12 kv. 3Ø 4 wire  
(K.G. & E.)  
Telephone (Southwestern Bell)  
(Aerial)

Lots 1-23, block 1  
Min. Pad = 1341

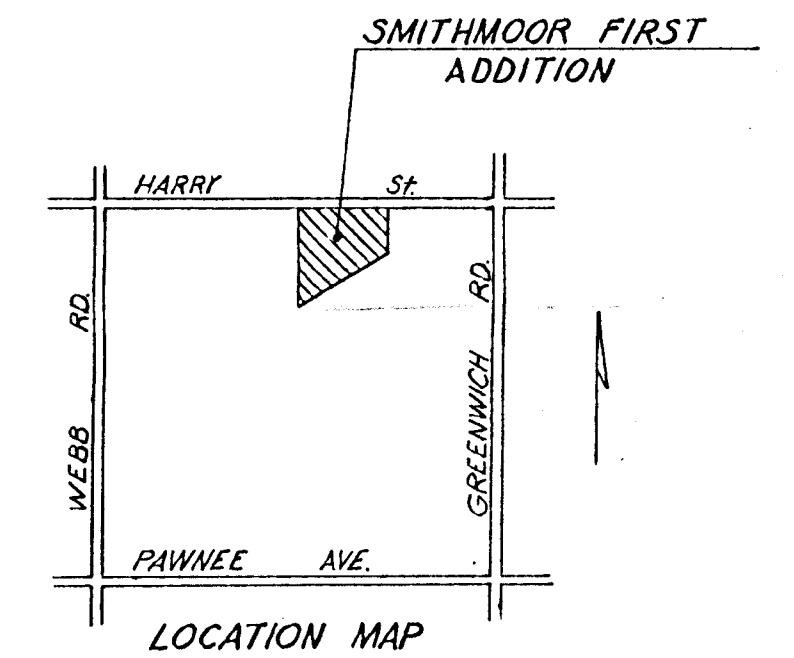
HUNTCREST 2ND ADDITION



R-1  
UNPLATTED  
JANELLE PROPERTIES

Scale: 1"=100'

BM: NW Cor. N. Hdw. RCB 800' ± E.  
NW Cor. NE 1/4 33-27-2E El. 1332.47 MSL  
Topo - April, 1979



# PRELIMINARY PLAT SMITHMOOR FIRST ADDITION

PART OF NE 1/4 SEC. 33-27-2E

OWNER- JANELLE PROPERTIES  
% SMITH & COMPANY  
838 S. EDGEWOOD

PROFESSIONAL ENGINEERING CONSULTANTS, P.A.		
ENGINEERS WICHITA, KANSAS		
Designed by	Job No. 36-85367	Sht. 1 of 1
Drawn by MLM	Date July 25, 1983	