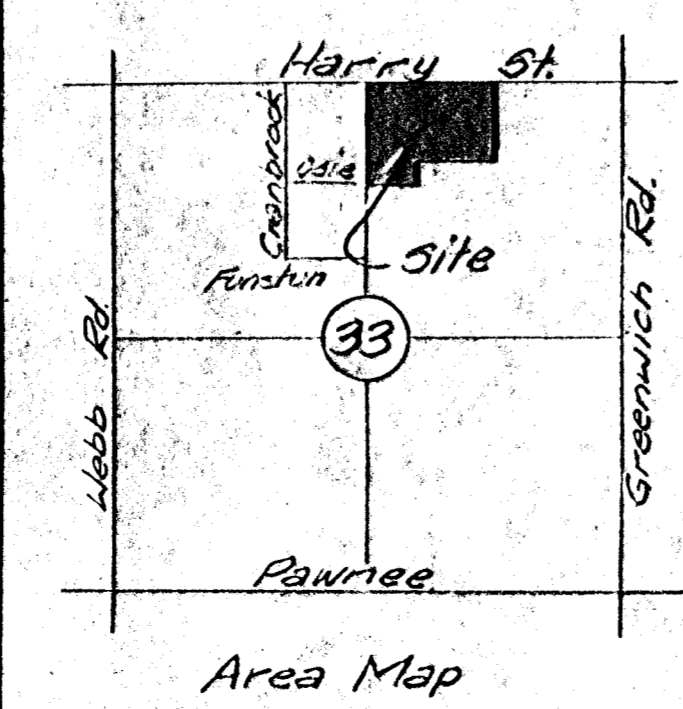
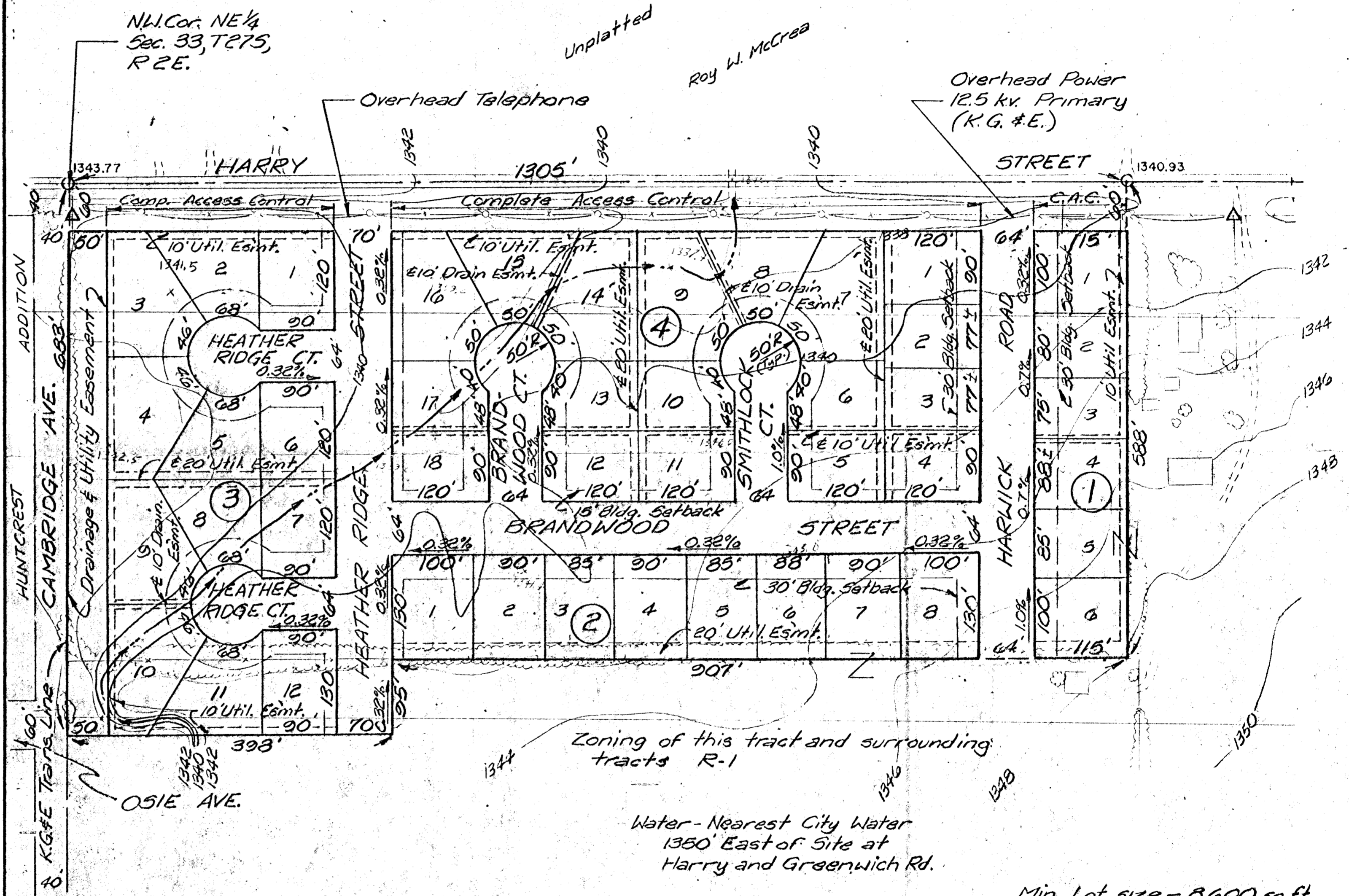


SCALE 1"=100'

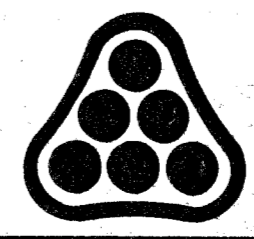
B.M. N.W. Cor. N. Hdwl R.C.B.  
 800'± E NW Cor NE 1/4, Sec. 33,  
 T27S R.2E. E1. = 1439.47 (Sea Level)



Owner - American Landmark Corp.  
 Subdivider: 835 South Edgemoor  
 Wichita, Kansas 67218

Engineer: P. E. C.  
 1440 East English  
 Wichita, Kansas 67211

Date of Topographic Survey:  
 February, 1968



No.	Revision	By	Date
<b>PRELIMINARY PLAT</b> OF <b>SMITHMOOR ADDITION</b>			
<b>PROFESSIONAL ENGINEERING CONSULTANTS</b> ENGINEERS WICHITA, KANSAS			
Designed by	G. L. K.	Job No.	72293
Drawn by	G. L. K.	Date	3-12-73
			Sh. 1 of 1

Min. Lot size - 8,600 sq. ft.

Location of proposed Utilities  
 to be approved by the County.