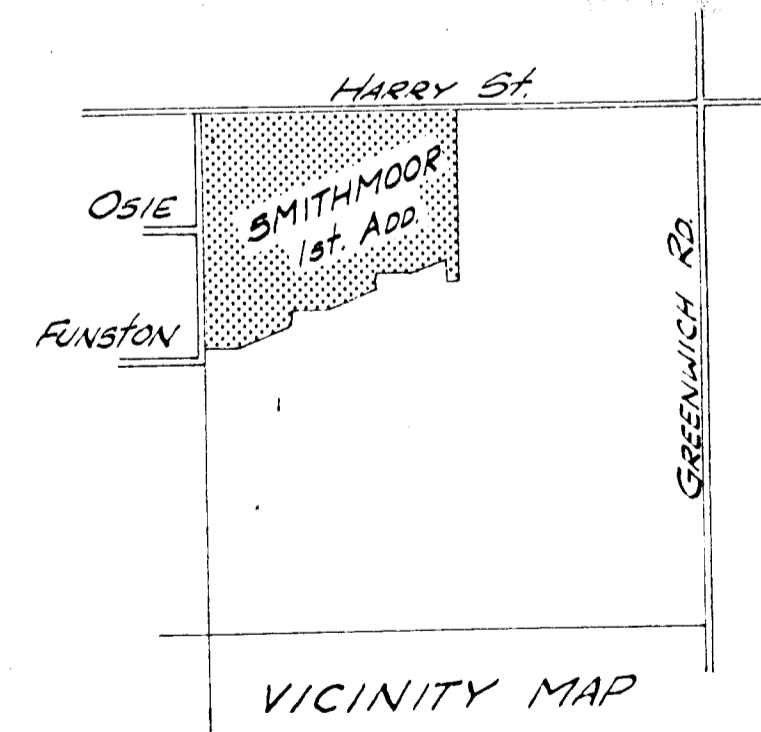
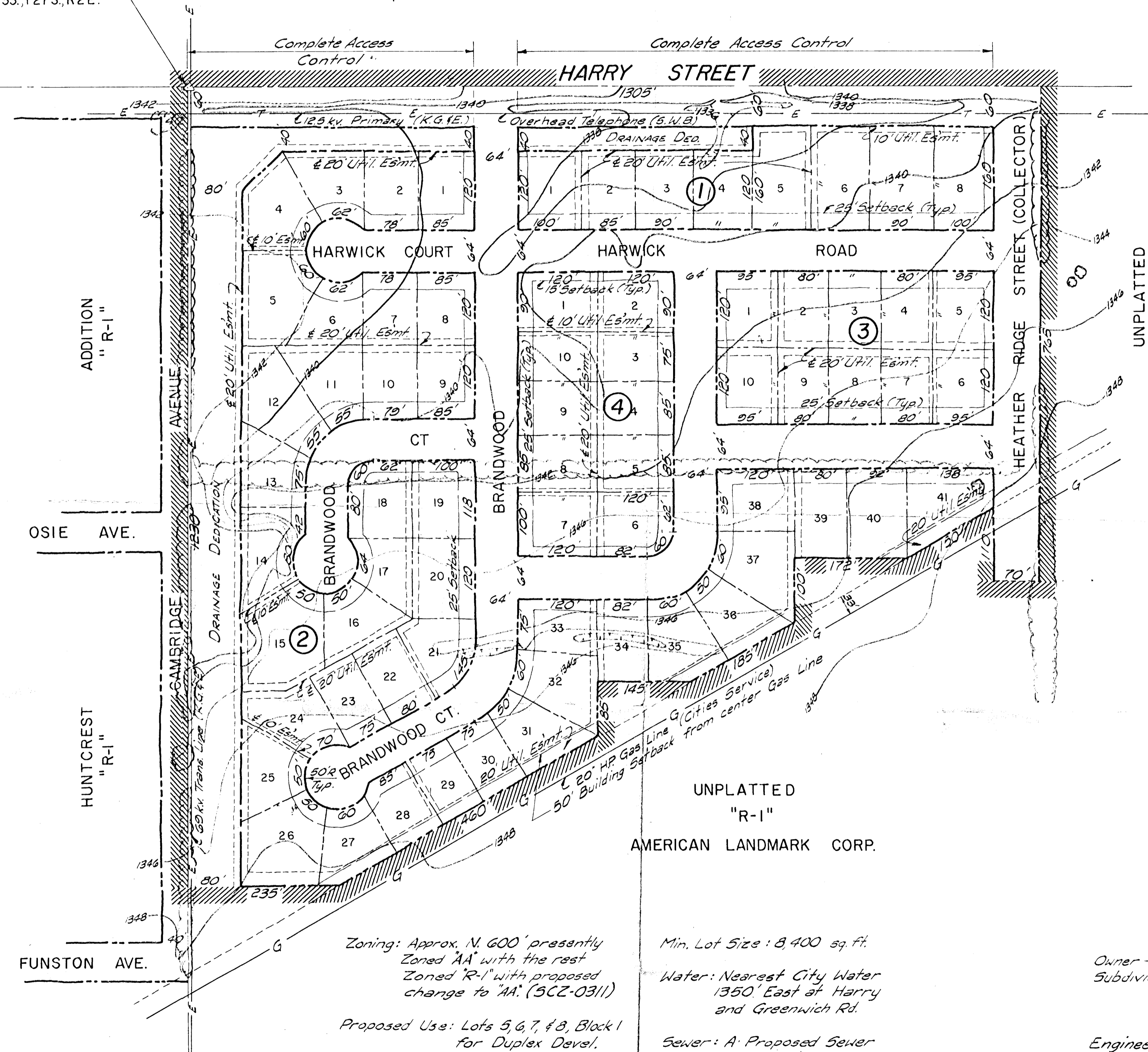


UNPLATTED
"R-1"
ROY W. MCCREA

NW Cor. NE 1/4
Sec. 33, T27S, R2E.



SCALE: 1" = 100'
B.M. NW Cor. N. Hdwl. R.C.B.
800' ± E. N.W. Cor. NE 1/4 Sec. 33,
T27S, R2E. Elev. = 1339.47 (M.S.L.)

UNPLATTED
"R-1"
AMERICAN LANDMARK CORP.

Zoning: Approx. N. 600' presently
Zoned "AA" with the rest
Zoned "R-1" with proposed
change to "AA." (5CC-0311)
Proposed Use: Lots 5, 6, 7, & 8, Block 1
for Duplex Devel.

Min. Lot Size: 8,400 sq. ft.
Water: Nearest City Water
1350' East of Harry
and Greenwich Rd.
Sewer: A Proposed Sewer
System is being
planned for the
area.

Location of proposed Utilities
to be approved by the County.

PRELIMINARY PLAT of
SMITHMOOR FIRST ADDITION

Owner -
Subdivider: American Landmark Corp.
835, S. Edgemoor
Wichita, Kansas 67218
Engineer: P.E.C.
1440 E. English
Wichita, Kansas 67211

Date of Topographic Survey - Feb. 1968

Submitted July 9, 1973

PROFESSIONAL ENGINEERING CONSULTANTS
ENGINEERS
WICHITA, KANSAS