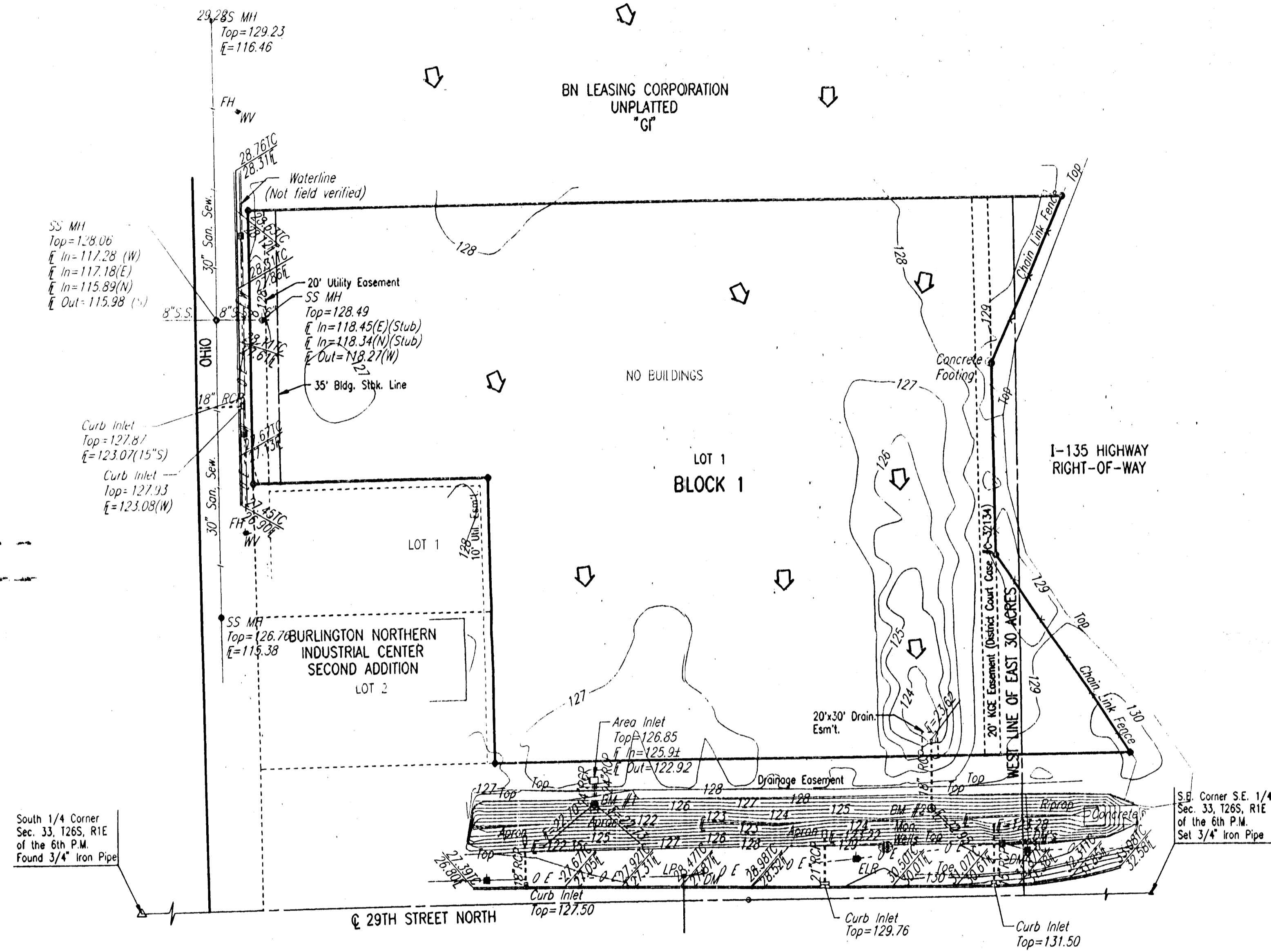


# DRAINAGE PLAN

## REDBURN 2ND ADDITION

### TO WICHITA, SEDGWICK COUNTY, KANSAS



SCALE: 1"=100'  
● = 3/4" IRON FOUND

- DATUM BENCH MARK: RAILROAD SPIKE EMBEDDED IN CONCRETE HUBGUARD, S.W. CORNER  
RCBC UNDER OHIO ST. 75'± NORTH OF 29TH STREET NORTH.  
ELEV.=129.61
- BENCH MARK 1: CHISELED "d" IN TOP & HEADWALL OF OUTFALL OF AREA INLET,  
EAST OF S.W. PROPERTY CORNER. ELEV.=128.89
- BENCH MARK 2: CHISELED "d" IN TOP OF PIPE OF OUTFALL OF AREA INLET, WEST  
OF S.E. PROPERTY CORNER. ELEV.=124.73

CITY DATUM USED FOR ALL ELEVATIONS.  
MEAN SEA LEVEL = CITY DATUM + 1187.4  
ALL SOILS ARE SCS HYDROLOGIC SOIL GROUP TYPE 'D'.

#### LEGEND

◻ STORM WATER FLOW

CONTRIBUTING AREA = 13.86 ACRES  
RUNOFF COEFFICIENT = 0.76  
ASSUMED TIME TO CONCENTRATION = 20 MINUTES  
CONTRIBUTING 5 YEAR FLOWRATE = CIA = 0.76\*4.00\*13.86=42 CFS

