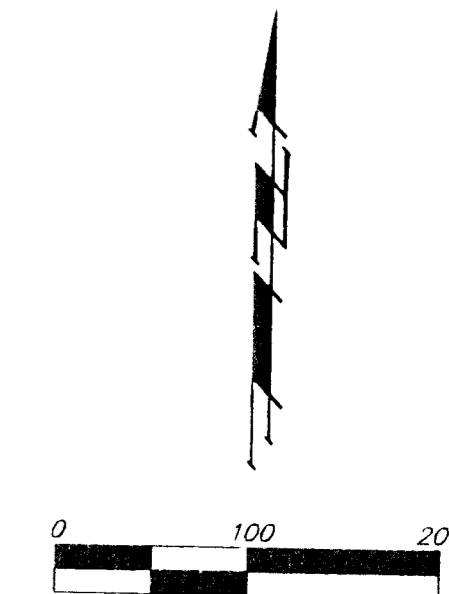
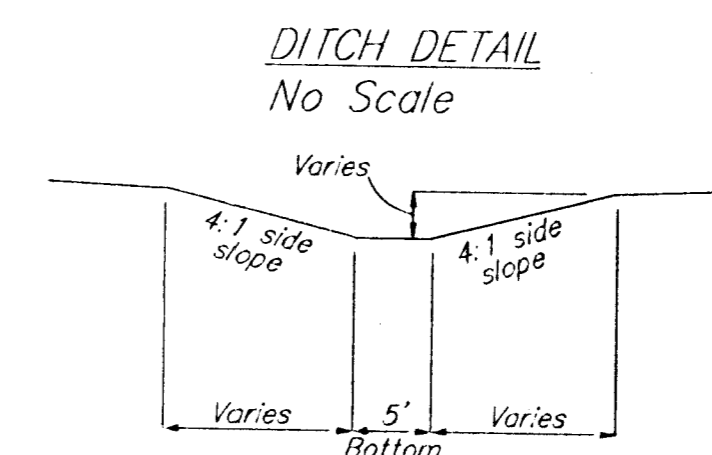
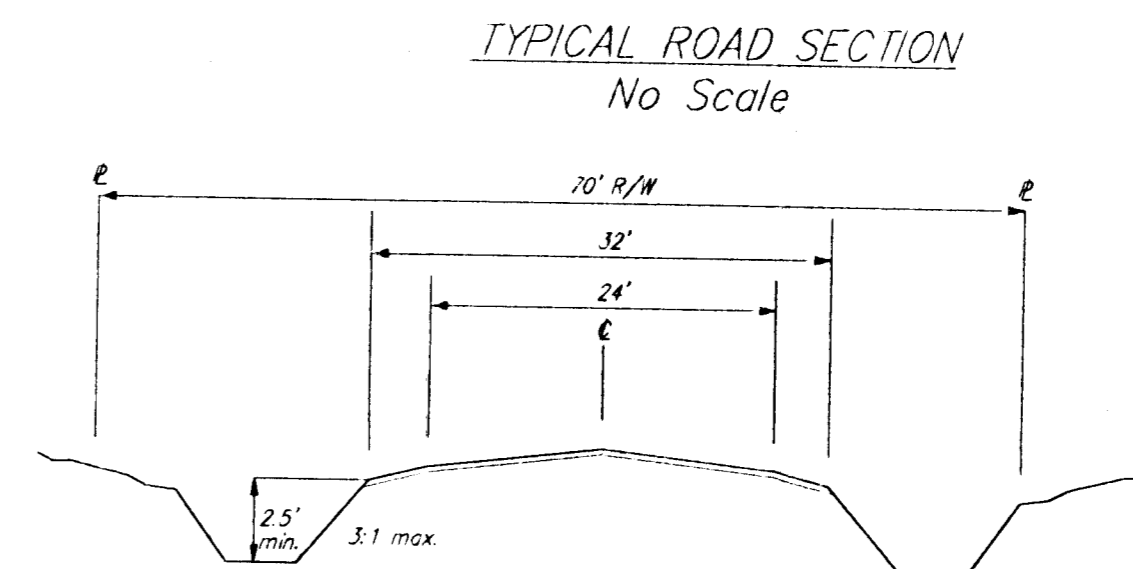


# DRAINAGE PLAN

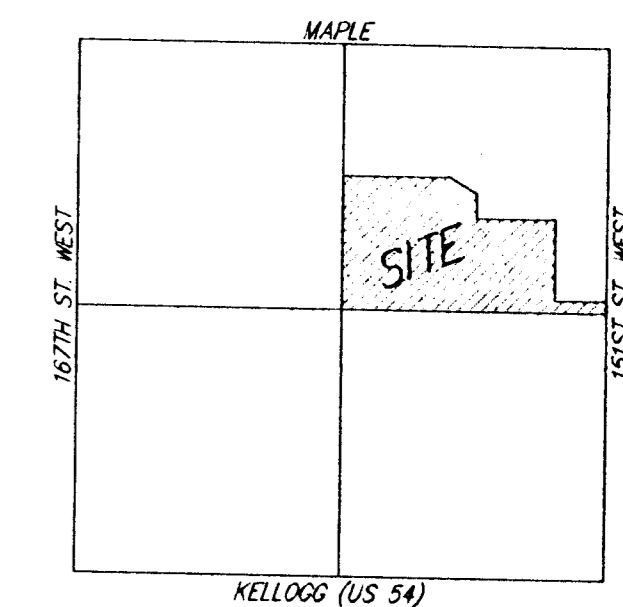
## REECE FARMS ESTATES

### AN ADDITION TO SEDGWICK COUNTY, KANSAS

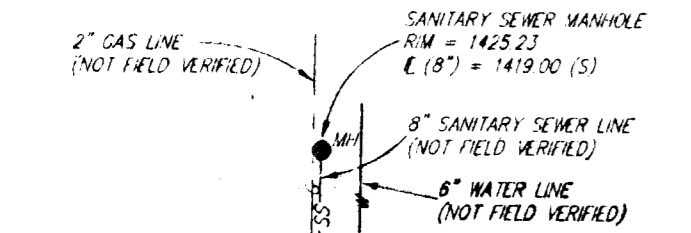
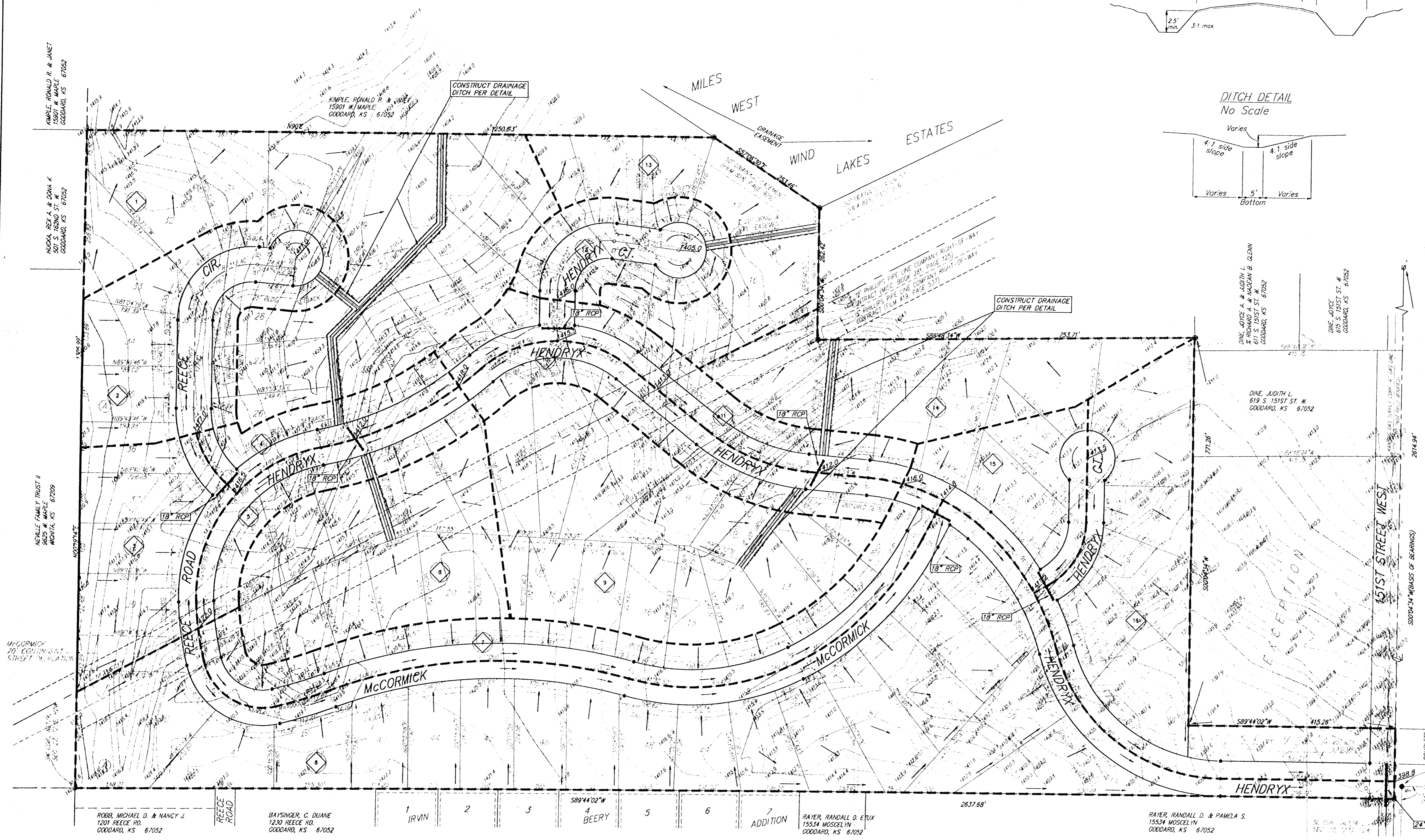


BENCHMARK:  
TOP OF 1" IRON, 12" DEEP, E1/4 COR.,  
SEC. 27, TWP. 27-S, R-2-W  
ELEV. = 2091.13 CITY DATUM  
1396.53 M.S.L.

NOTE:  
BLANKET EASEMENT  
KANSAS GAS SUPPLY CORPORATION  
RIGHT-OF-WAY CONTRACT  
(FILM 561, PAGE 335)  
(TO BE CONFINED)



Drainage Area	Area (acres)	C <sub>s</sub>	C <sub>m</sub>	T <sub>e</sub> (min)	I <sub>p</sub> (in/hr)	Q <sub>p</sub> (cfs)	Q <sub>m</sub> (cfs)	Q <sub>u</sub> (cfs)
1	7.3	0.50	0.50	15	3.83	7.37	13.9	29.9
2	3.5	0.50	0.50	15	3.83	7.37	6.7	12.9
3	2.5	0.50	0.50	15	3.83	7.37	4.8	9.2
4	1.1	0.50	0.50	15	3.83	7.37	2.1	4.1
5	1.4	0.50	0.50	15	3.83	7.37	2.7	5.2
6	13.6	0.50	0.50	15	3.83	7.37	26.0	50.1
7	3.3	0.50	0.50	15	3.83	7.37	6.3	12.2
8	3.7	0.50	0.50	15	3.83	7.37	7.1	13.6
9	5.6	0.50	0.50	15	3.83	7.37	10.7	20.6
10	1.9	0.50	0.50	15	3.83	7.37	3.6	7.0
11	2.1	0.50	0.50	15	3.83	7.37	4.0	7.7
12	1.7	0.50	0.50	15	3.83	7.37	3.3	6.3
13	2.9	0.50	0.50	15	3.83	7.37	5.6	10.7
14	3.3	0.50	0.50	15	3.83	7.37	6.3	12.2
15	1.8	0.50	0.50	15	3.83	7.37	3.4	6.6
16	5.0	0.50	0.50	15	3.83	7.37	9.6	18.4



NOTE: The proposed drainage plan provided herein is a generally defined plan to follow for design. It is recognized and assumed that upon the final design of street and storm sewer improvements within this plot the designer will modify or alter the general drainage plan as necessary in order to implement the installation of the improvements to obtain the most economical design and construction possible.