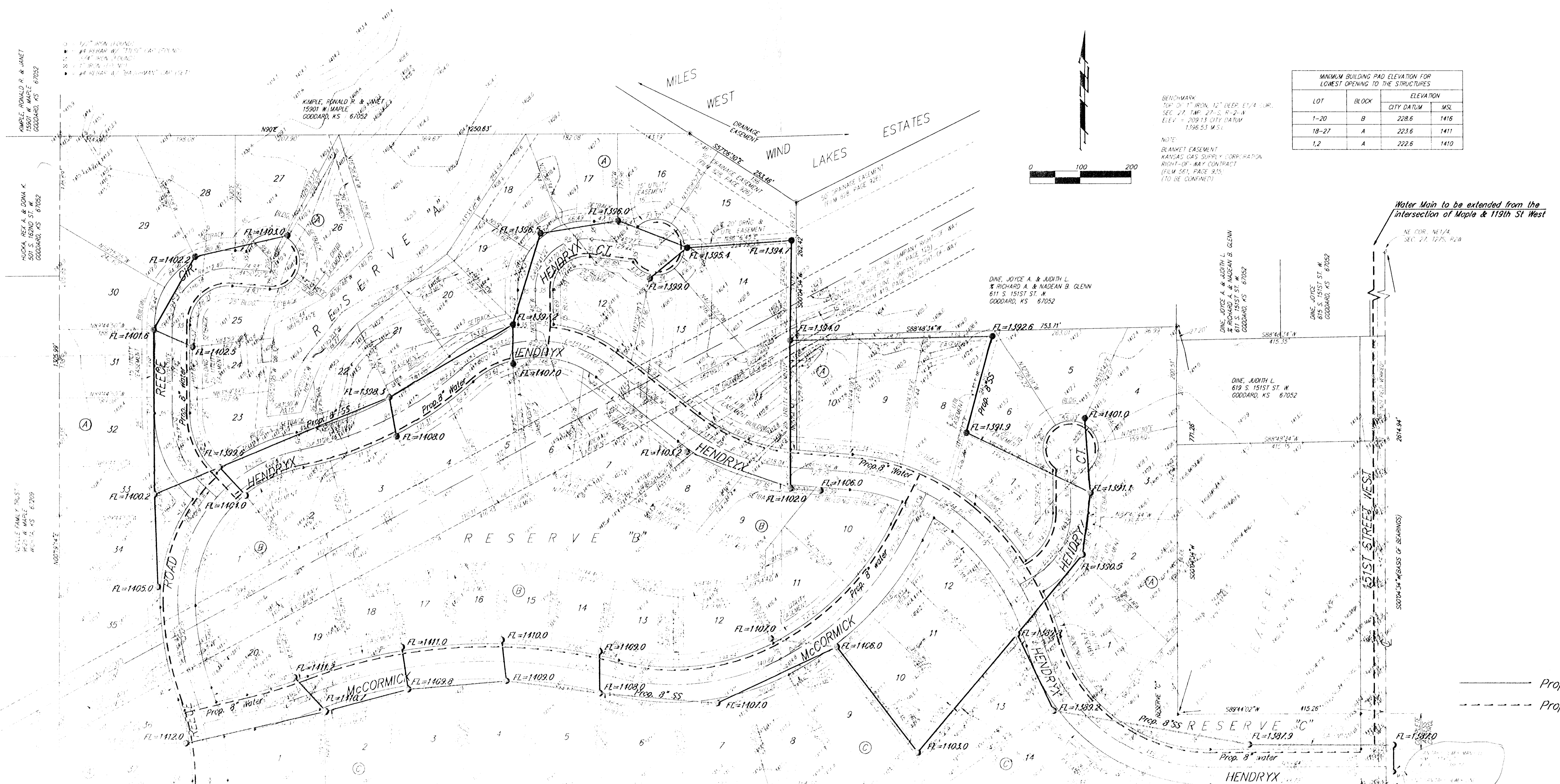


UTILITY PLAN REECE FARMS ESTATES AN ADDITION TO SEDGWICK COUNTY, KANSAS



1/2" IRON ROD
 #4 REBAR W/ 12" SPACING
 #4 REBAR W/ 18" SPACING
 #4 REBAR W/ 24" SPACING
 #4 REBAR W/ 36" SPACING
 #4 REBAR W/ 48" SPACING
 #4 REBAR W/ 60" SPACING
 #4 REBAR W/ 72" SPACING
 #4 REBAR W/ 84" SPACING
 #4 REBAR W/ 96" SPACING
 #4 REBAR W/ 108" SPACING
 #4 REBAR W/ 120" SPACING
 #4 REBAR W/ 132" SPACING
 #4 REBAR W/ 144" SPACING
 #4 REBAR W/ 156" SPACING
 #4 REBAR W/ 168" SPACING
 #4 REBAR W/ 180" SPACING
 #4 REBAR W/ 192" SPACING
 #4 REBAR W/ 204" SPACING
 #4 REBAR W/ 216" SPACING
 #4 REBAR W/ 228" SPACING
 #4 REBAR W/ 240" SPACING
 #4 REBAR W/ 252" SPACING
 #4 REBAR W/ 264" SPACING
 #4 REBAR W/ 276" SPACING
 #4 REBAR W/ 288" SPACING
 #4 REBAR W/ 300" SPACING

KIMBLE, RONALD R. & JANET
 15501 W. MAPLE
 GOODARD, KS 67052

HUCKA, REX A. & DONNA K.
 501 S. 18TH ST. W.
 GOODARD, KS 67052

LESLIE, EMIL F. TRUST
 1022 W. MAPLE
 W.C. 14, KS 67052

KIMBLE, RONALD R. & JANET
 15501 W. MAPLE
 GOODARD, KS 67052

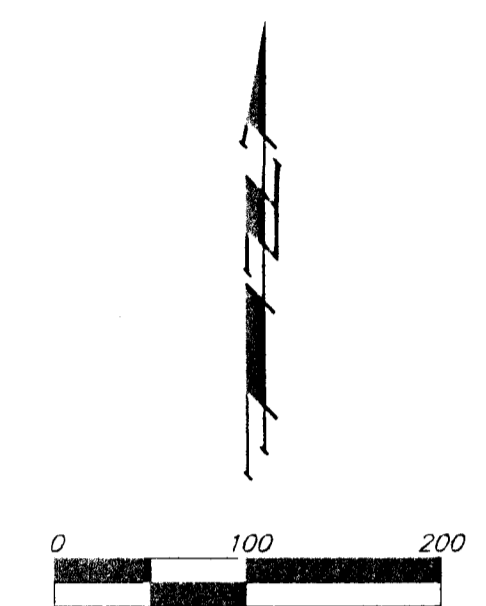
HUCKA, REX A. & DONNA K.
 501 S. 18TH ST. W.
 GOODARD, KS 67052

BEERY
 4 BEERY

ADDITION
 7 ADDITION

KIMBLE, RONALD R. & JANET
 15501 W. MAPLE
 GOODARD, KS 67052

KIMBLE, RONALD R. & JANET
 15501 W. MAPLE
 GOODARD, KS 67052



BENCHMARK
 TOP OF 1" IRON, 12" DEEP, 1/4" DIA.
 SEC. 27, TWP. 27-S, R-2-W
 ELEV. = 209.13 CITY DATUM
 1396.53 M.S.L.

NOTE
 BLANKET EASEMENT
 KANSAS GAS SUPPLY CORPORATION
 RIGHT-OF-WAY CONTRACT
 (FILM 561, PAGE 915,
 (TO BE CONFIRMED))

| MINIMUM BUILDING PAD ELEVATION FOR LOWEST OPENING TO THE STRUCTURES | | | |
|---|-------|------------|------|
| LOT | BLOCK | ELEVATION | |
| | | CITY DATUM | MSL |
| 1-20 | B | 228.6 | 1416 |
| 18-27 | A | 223.6 | 1411 |
| 1,2 | A | 222.6 | 1410 |

Water Main to be extended from the intersection of Maple & 119th St West

——— Prop. Sanitary Sewer
 - - - Prop. Water Main