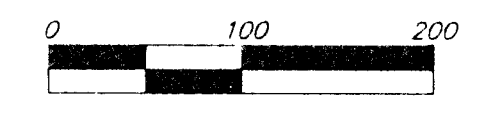


UTILITY PLAN

REECE FARMS ESTATES

AN ADDITION TO SEDGWICK COUNTY, KANSAS

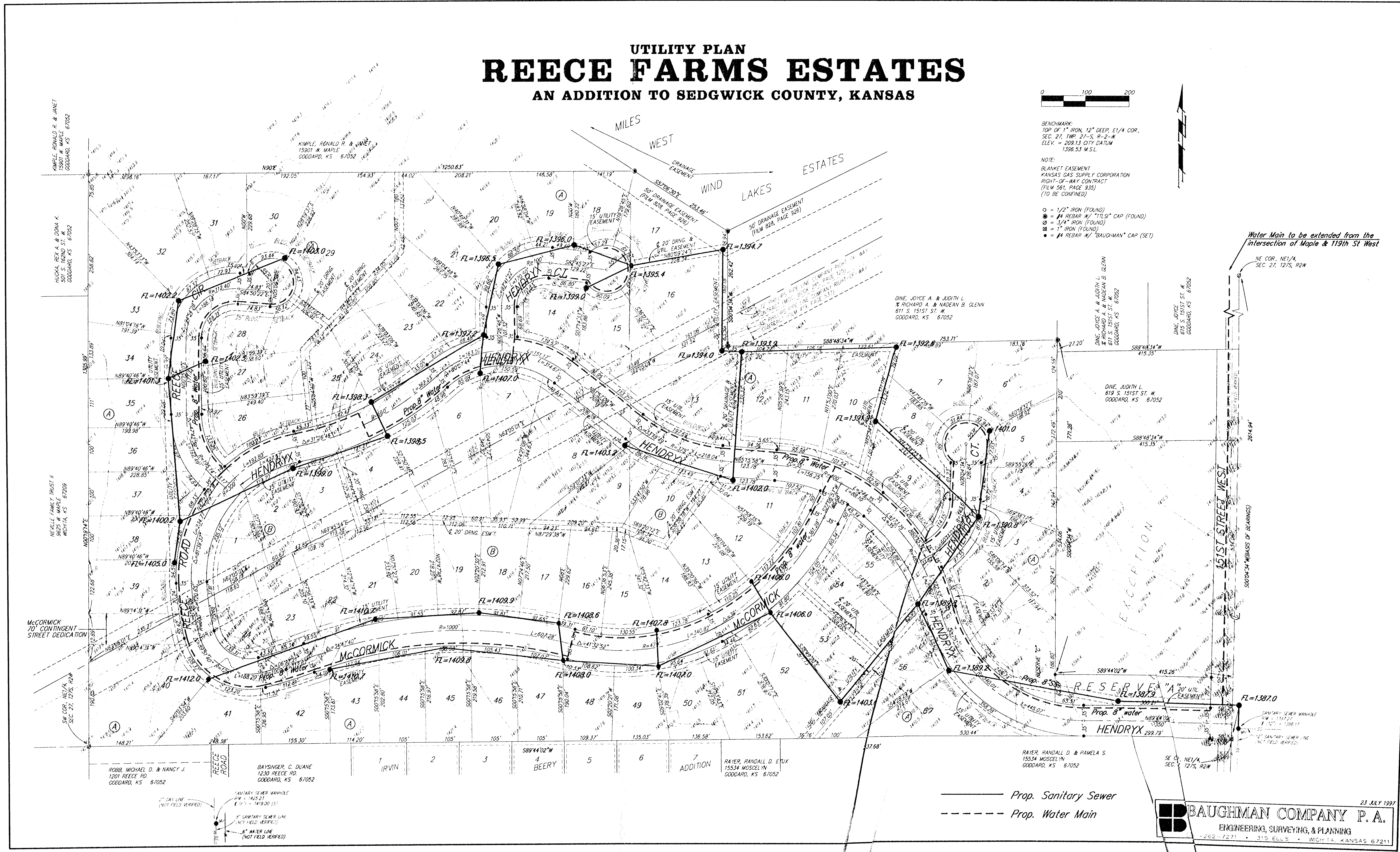


BENCHMARK:
TOP OF 1" IRON, 12" DEEP, 1/4 COR.,
SEC. 27, TWP. 27-S, R-2-W
ELEV. = 2091.13 CITY DATUM
1396.53 M.S.L.

NOTE:
BLANKET EASEMENT
KANSAS GAS SUPPLY CORPORATION
RIGHT-OF-WAY CONTRACT
(FILM 561, PAGE 335)
(TO BE CONTINUED)

- = 1/2" IRON (FOUND)
- = #4 REBAR W/ "T.L.S." CAP (FOUND)
- ⊙ = 3/4" IRON (FOUND)
- ⊗ = 1" IRON (FOUND)
- ⊕ = #4 REBAR W/ "BAUGHMAN" CAP (SET)

Water Main to be extended from the
intersection of Maple & 119th St West



— Prop. Sanitary Sewer
- - - Prop. Water Main

23 JULY 1997

BAUGHMAN COMPANY P. A.
ENGINEERING, SURVEYING, & PLANNING
262-7271 • 319 ELLS • MOHAWK, KANSAS 67211