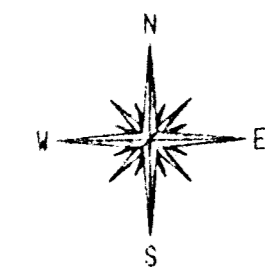


Vicinity Map of "RASMUSSEN'S FIRST ADDITION" to Sedgwick County, Kansas

E 81ST STREET NORTH

NW Corner of the SW
1/4 of Sec 35, T25S,
R1W of the 6th PM



SCALE: 1" = 30'

LEGEND:

- PLM = Pipeline Marker
- PP = Power Pole
- TR = Telephone Riser Box

Date of topography: Nov. 25, 1997

Kansas One-Call was contacted for utility location. Utilities shown are as flagged. It is advised that the utility companies be contacted before any construction or excavation is begun.

Bench Mark:
RR spike in HLP, 30' South and
30' East of the West Quarter
Corner of Section 35
Elevation 1353.17 MSL

HOOVER ROAD

E 81ST STREET NORTH COURT

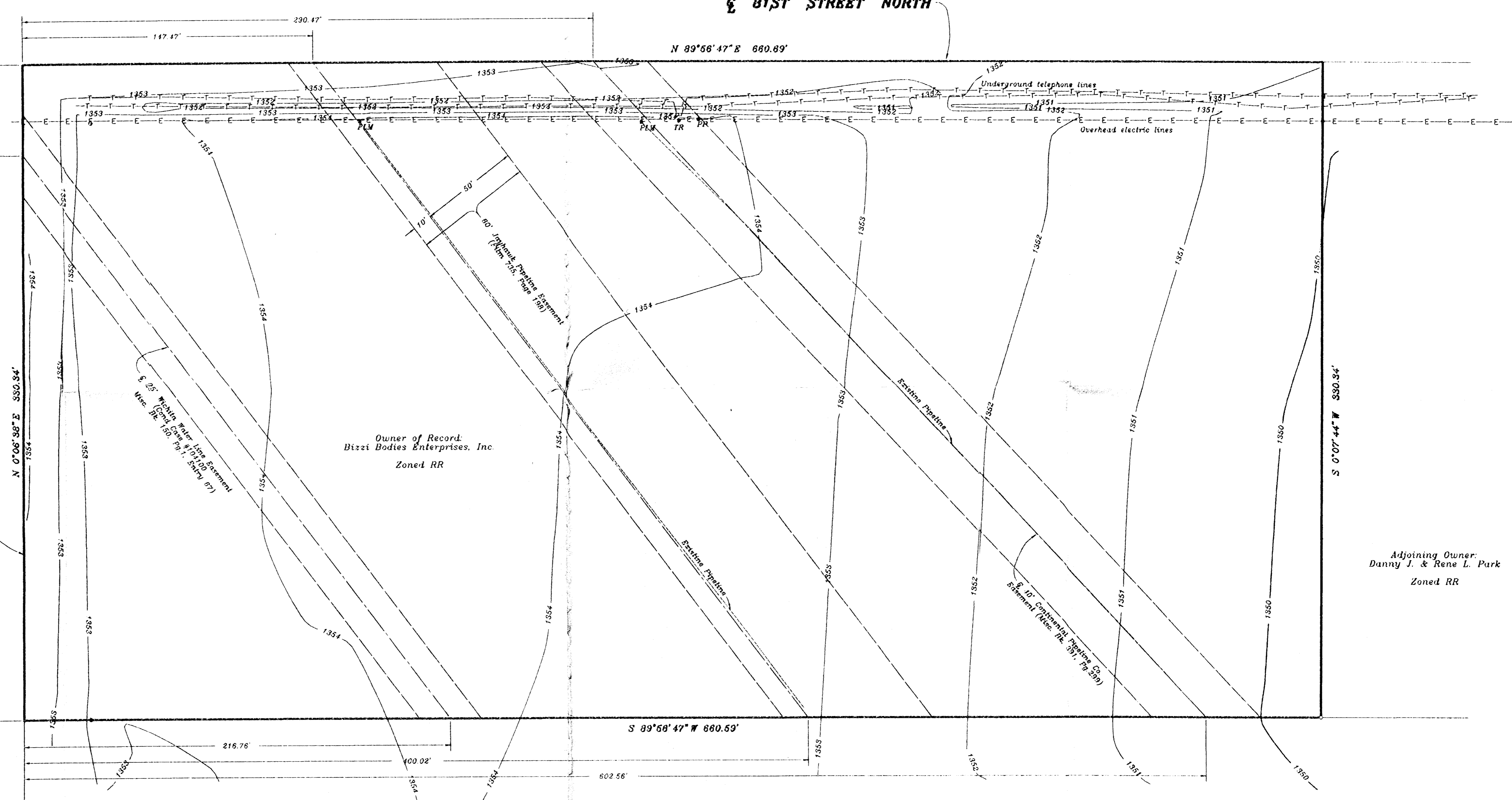
Adjoining Owner:
Joseph P. & Deborah K. Schneider
Zoned RR

Adjoining Owner:
William K. & Mary A. Minihan
Zoned RR

Owner of Record:
Bizzi Bodies Enterprises, Inc.
Zoned RR

Adjoining Owner:
Valley Farms, Inc.
Zoned RR

Adjoining Owner:
Danny J. & Rene L. Park
Zoned RR



N 0°06'38" E 330.34'

S 0°07'44" W 330.34'

S 89°58'47" W 680.59'

147.47' 290.47'

45.96'

1353'

1353'

1353'

1353'

1353'

1353'

1353'

1353'

1353'

1353'

1353'

1353'

1353'

1353'

1353'

1353'

1353'

1353'

1353'

1353'

1353'

1353'

1353'

1353'

1353'

1353'

1353'

1353'

1353'

1353'

1353'

1353'

1353'

1353'

1353'

1353'

1353'

1353'

1353'

1353'

1353'

1353'

1353'

1353'

1353'

1353'

1353'

1353'

1353'

1353'

1353'

1353'

1353'

1353'

1353'

1353'

1353'

1353'

1353'

1353'

1353'

1353'

1353'

1353'

1353'

1353'

1353'

1353'

1353'

1353'

1353'

1353'

1353'

1353'

1353'

1353'

1353'

1353'

1353'

1353'

1353'

1353'

1353'

1353'

1353'

1353'

1353'

1353'

1353'

1353'

1353'

1353'

1353'

1353'

1353'

1353'

1353'

1353'

1353'

1353'

1353'

1353'

1353'

1353'

1353'

1353'

1353'

1353'

1353'

1353'

1353'

1353'

1353'

1353'

1353'

1353'

1353'

1353'

1353'

1353'

1353'

1353'

1353'

1353'

1353'

1353'

1353'

1353'

1353'

1353'

1353'

1353'

1353'

1353'

1353'

1353'

1353'

1353'

1353'

1353'

1353'

1353'

1353'

1353'

1353'

1353'

1353'

1353'

1353'

1353'

1353'

1353'

1353'

1353'

1353'

1353'

1353'

1353'

1353'

1353'

1353'

1353'

1353'

1353'

1353'

1353'

1353'

1353'

1353'

1353'

1353'

1353'

1353'

1353'

1353'

1353'

1353'

1353'

1353'