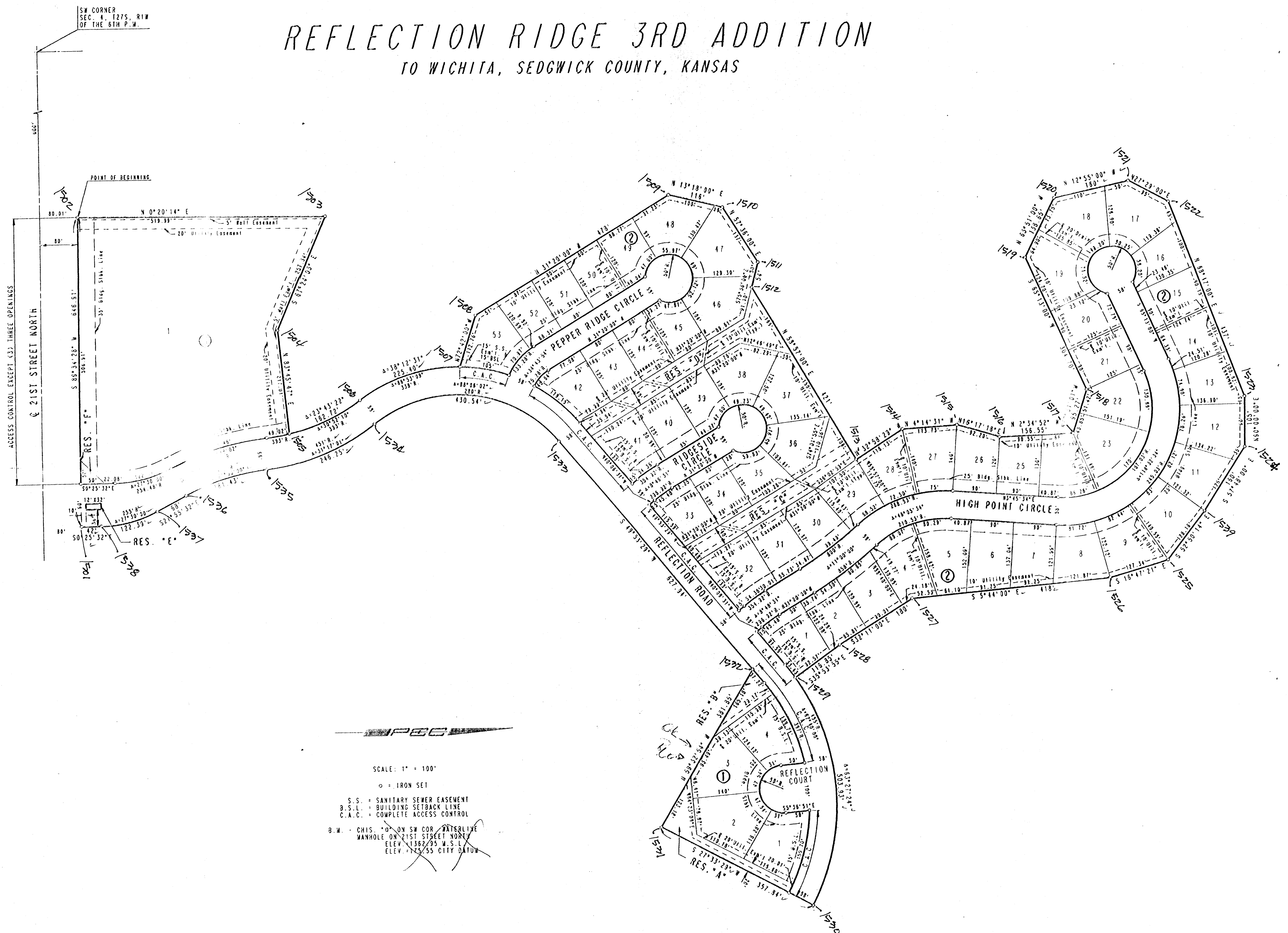


REFLECTION RIDGE 3RD ADDITION TO WICHITA, SEDGWICK COUNTY, KANSAS



SW CORNER
SEC. 4, T27S, R1W
OF THE 6TH P.M.

ACCESS CONTROL EXCEPT (3) THREE OPENINGS

21ST STREET NORTH

RES. "F"

RES. "E"

SCALE: 1" = 100'
 ○ = IRON SET
 S.S. = SANITARY SEWER EASEMENT
 B.S.L. = BUILDING SETBACK LINE
 C.A.C. = COMPLETE ACCESS CONTROL
 B.M. - CHIS. "O" ON SW COR. WATERLINE
 MANHOLE ON 21ST STREET NORTH
 ELEV. 1382.95 W.S.L.
 ELEV. 1325.55 CITY DATUM