

REFLECTION RIDGE COMMERCIAL 2ND ADDITION TO WICHITA, SEDGWICK COUNTY, KANSAS

*Please leave in
Folder*

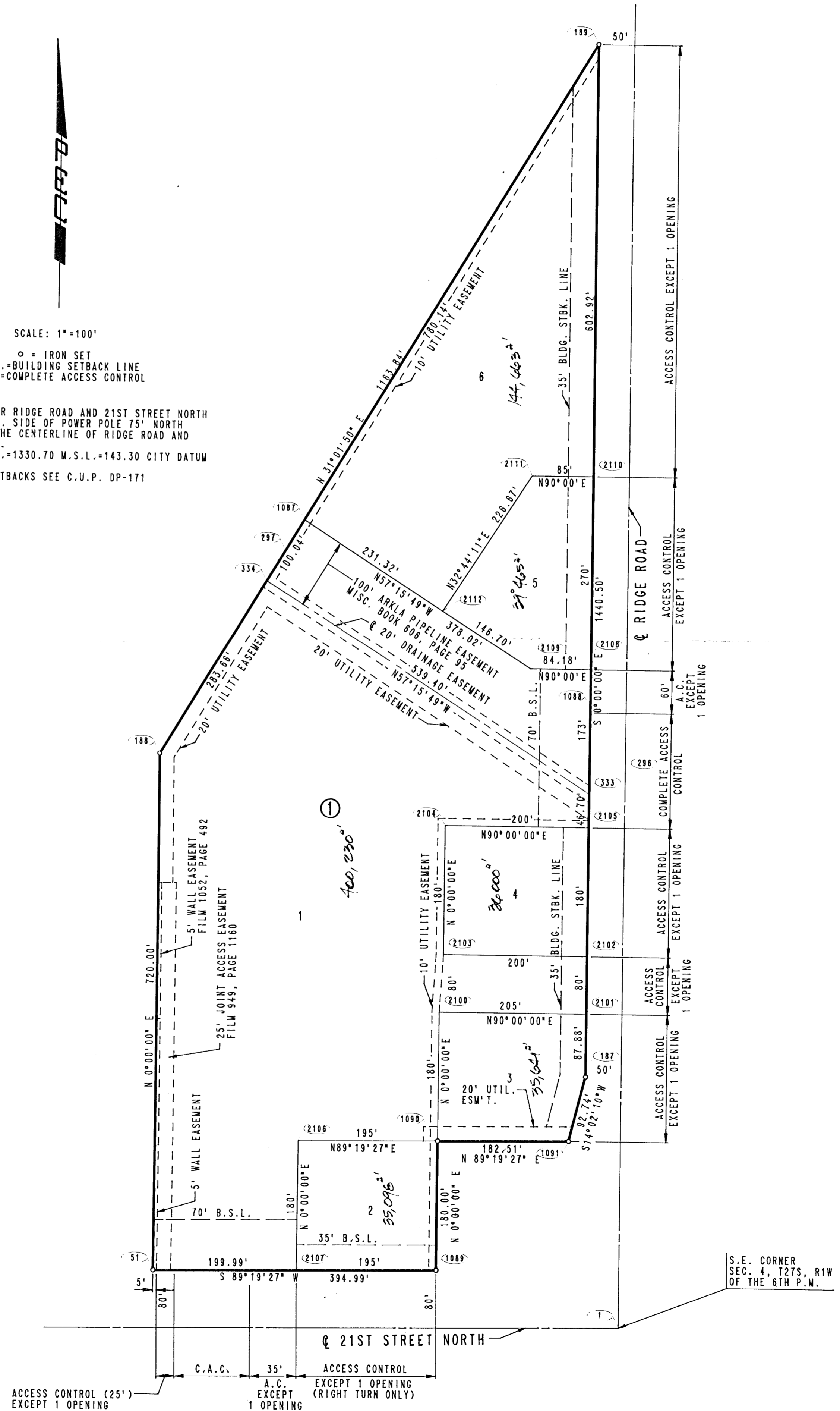


SCALE: 1"=100'

○ = IRON SET
B.S.L.=BUILDING SETBACK LINE
C.A.C.=COMPLETE ACCESS CONTROL

B.M. - N.E. CORNER RIDGE ROAD AND 21ST STREET NORTH
R.R. SPIKE IN S.W. SIDE OF POWER POLE 75' NORTH
AND 58' EAST OF THE CENTERLINE OF RIDGE ROAD AND
21ST STREET NORTH.
ELEV.=1330.70 M.S.L.=143.30 CITY DATUM

FOR ADDITIONAL SETBACKS SEE C.U.P. DP-171



S.E. CORNER
SEC. 4, T27S, R1W
OF THE 6TH P.W.