

**BILL G. YUNG DESIGN**  
WICHITA, KANSAS  
1400 W. 21ST STREET, NORTH  
SUITE 200

DATE: SEPT. 18, 1990  
REV.

SHEET TITLE:  
PRELIMINARY PLAN

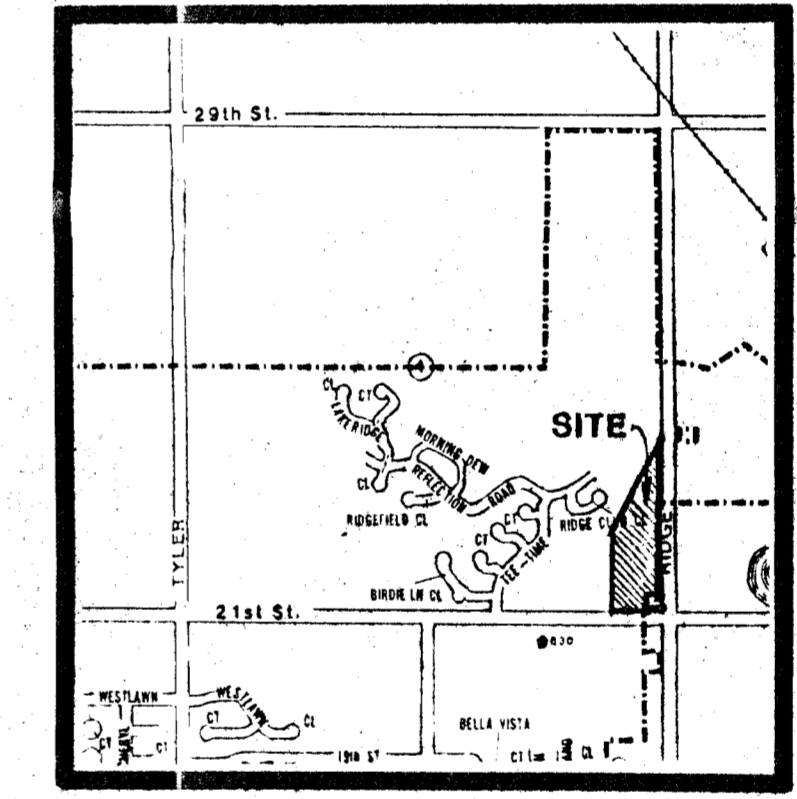
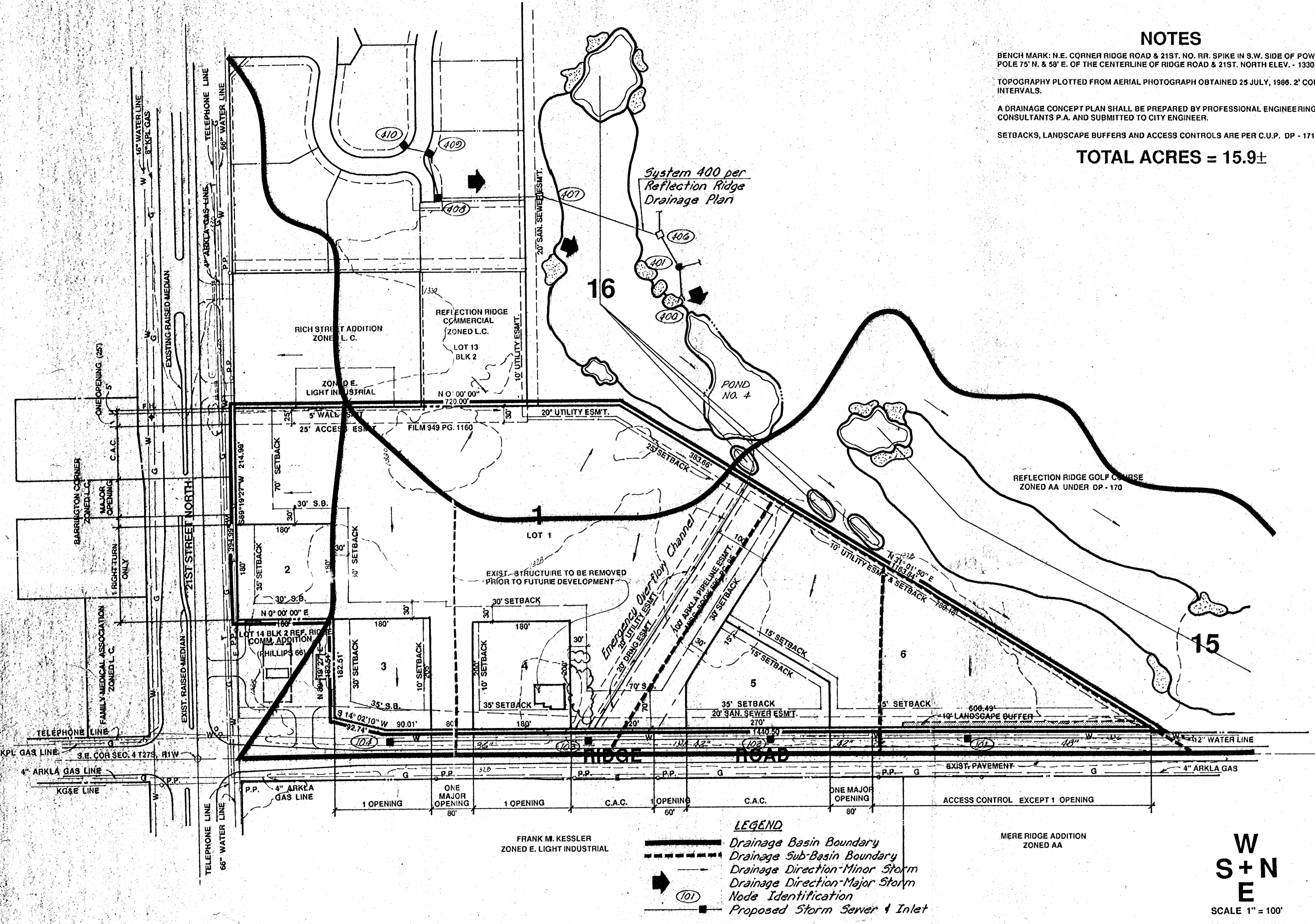
PROJECT:  
REFLECTION RIDGE COMMERCIAL  
AND ADDITION

SHEET  
OF

### NOTES

BENCH MARK: N.E. CORNER RIDGE ROAD & 21ST. NO. RR. SPIKE IN S.W. SIDE OF POWER POLE 75' N. & 58' E. OF THE CENTERLINE OF RIDGE ROAD & 21ST. NORTH ELEV. - 1330.70  
TOPOGRAPHY PLOTTED FROM AERIAL PHOTOGRAPH OBTAINED 25 JULY, 1988. 2' CONTOUR INTERVALS.  
A DRAINAGE CONCEPT PLAN SHALL BE PREPARED BY PROFESSIONAL ENGINEERING CONSULTANTS P.A. AND SUBMITTED TO CITY ENGINEER.  
SETBACKS, LANDSCAPE BUFFERS AND ACCESS CONTROLS ARE PER C.U.P. DP - 171

**TOTAL ACRES = 15.9±**



**LOCATION MAP**

- LEGEND**
- Drainage Basin Boundary
  - - - Drainage Sub-Basin Boundary
  - Drainage Direction - Minor Storm
  - Drainage Direction - Major Storm
  - (101) Node Identification
  - Proposed Storm Sewer & Inlet

**W  
S+N  
E**  
SCALE 1" = 100'  
2' CONTOUR INTERVAL

*Lot 14, Block 2 Reflection Ridge Commercial; Lots 2-6 Reflection Ridge Commercial End; and a portion Lot 1 Reflection Ridge Commercial End shall be graded to drain to streets or existing drainage systems via drives, flumes, private storm sewer systems and/or other approved drainage facilities.*

**DRAINAGE CONCEPT** (A REPLAT OF A PORTION OF REFLECTION RIDGE COMMERCIAL ADDITION)

**PROFESSIONAL ENGINEERING CONSULTANTS, P.A.**  
ENGINEERS  
WICHITA, KANSAS

# REFLECTION RIDGE COMMERCIAL 2ND ADDITION

OWNER: REFLECTION RIDGE INC., 7926 W. 21ST STREET, WICHITA, KS 67212 (316) 721-2153