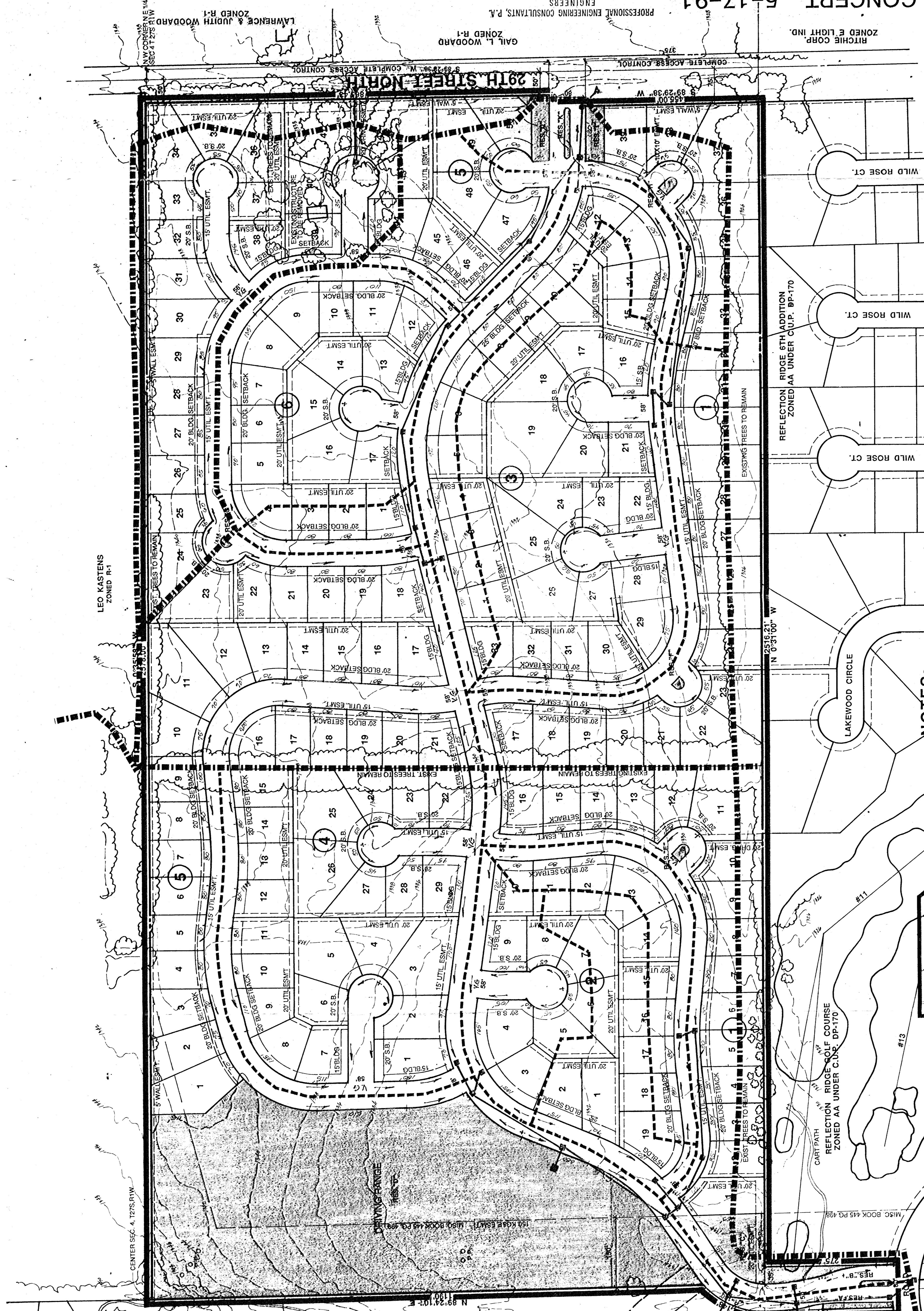


REF. RIDGE ADD.
ZONED AA
UNDER C.V.P. DP-170

HOLE #17
REFLECTION RIDGE
GOLF COURSE
ZONED AA UNDER
C.V.P. DP-170

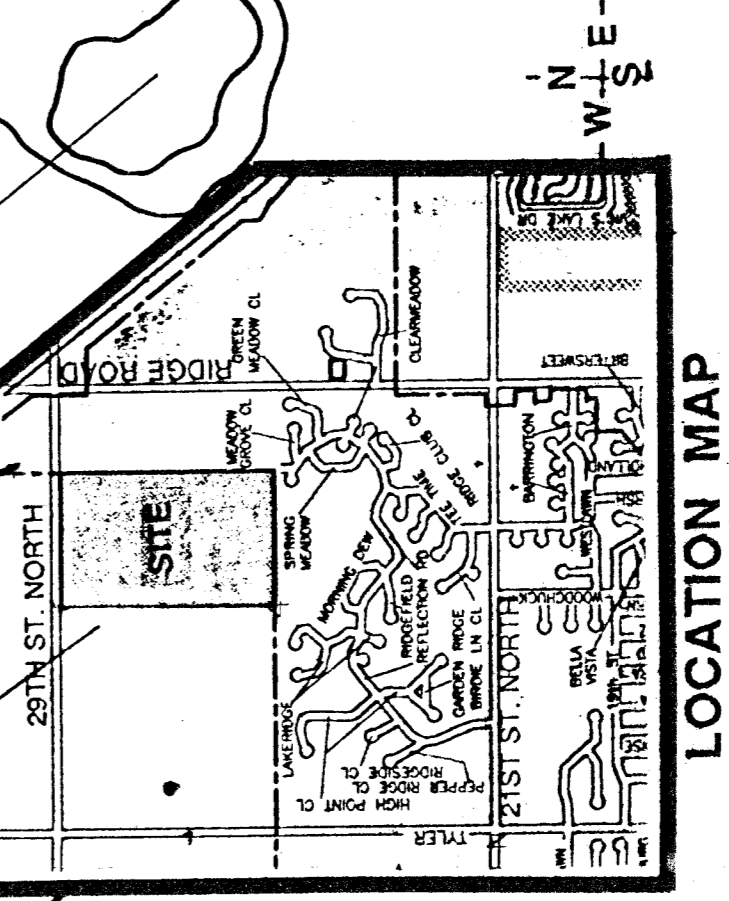
REFLECTION RIDGE, INC.
ZONED UNDER C.U.P.
DP-170



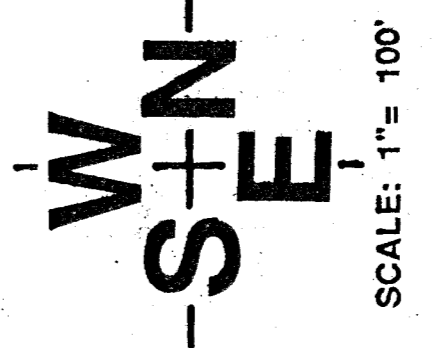
NOTES:

- 1.) BENCH MARK: CHISELED " " N.E. COR. 3-7'x3' RIB BRIDGE ON RIDGE ROAD 175' NORTH OF S.E. COR. N.E. 1/4 SEC. 4, T27S, R17W ELEV. : 1325.64 M.S.L.
- 2.) TOPOGRAPHY IS FROM AERIAL OBTAINED 15 DEC. 1990.
- 3.) RESERVES "A" AND "B" ARE FOR LANDSCAPING, ENTRY MONUMENTS AND UTILITIES.
- 4.) RESERVE "C" IS FOR LANDSCAPING, ENTRY MONUMENTS, UTILITIES, DRAINAGE, GOLF COURSE AND CART PATH AND PLAY EQUIPMENT.

- 5.) RESERVE "D" IS FOR DRIVING RANGE WITH PARKING AND RELATED FACILITIES, LANDSCAPING, DRAINAGE AND ENTRY MONUMENTS.
- 6.) RESERVES "E" THRU "H" ARE FOR LANDSCAPING AND UTILITIES.
- 7.) RESERVES "I", "J" AND "K" ARE FOR LANDSCAPING, ENTRY MONUMENTS AND UTILITIES.



NO SCALE



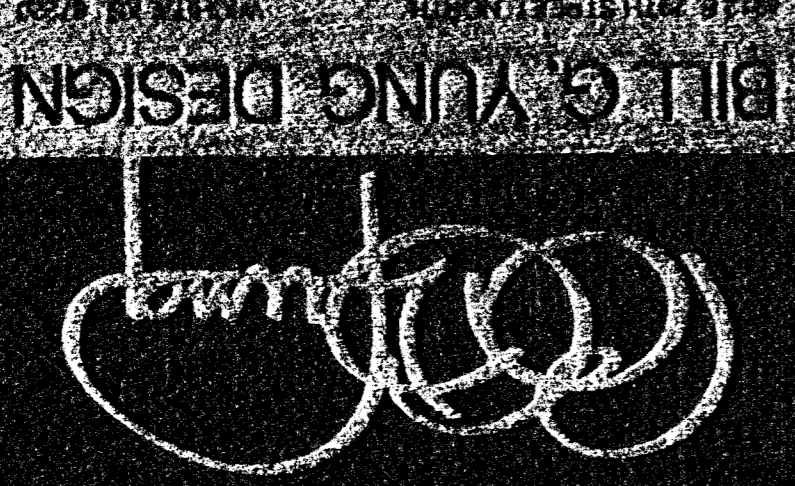
REFLECTION RIDGE 7TH ADD.

DRAINAGE CONCEPT 5-17-91

PROFESSIONAL ENGINEERING CONSULTANTS, P.A.
ENGINEERS
WICHITA, KANSAS

GAIL L. WOODARD
ZONED R-1

LAWRENCE & JUDITH WOODWARD
ZONED R-1



BIL & YUNG DESIGN

OWNER: REFLECTION RIDGE INC., 7226 W. 21ST STREET, WICHITA, KANSAS, 67213 PH. (316) 741-2123

PROJECT LOCATION BLOCK WITH ADDITION

SHEET TITLE REFLECTION RIDGE

DATE MAY 1991

SHEET