

# REFLECTION RIDGE 7TH & 8TH ADDITION TO WICHITA, SEDGWICK COUNTY, KANSAS

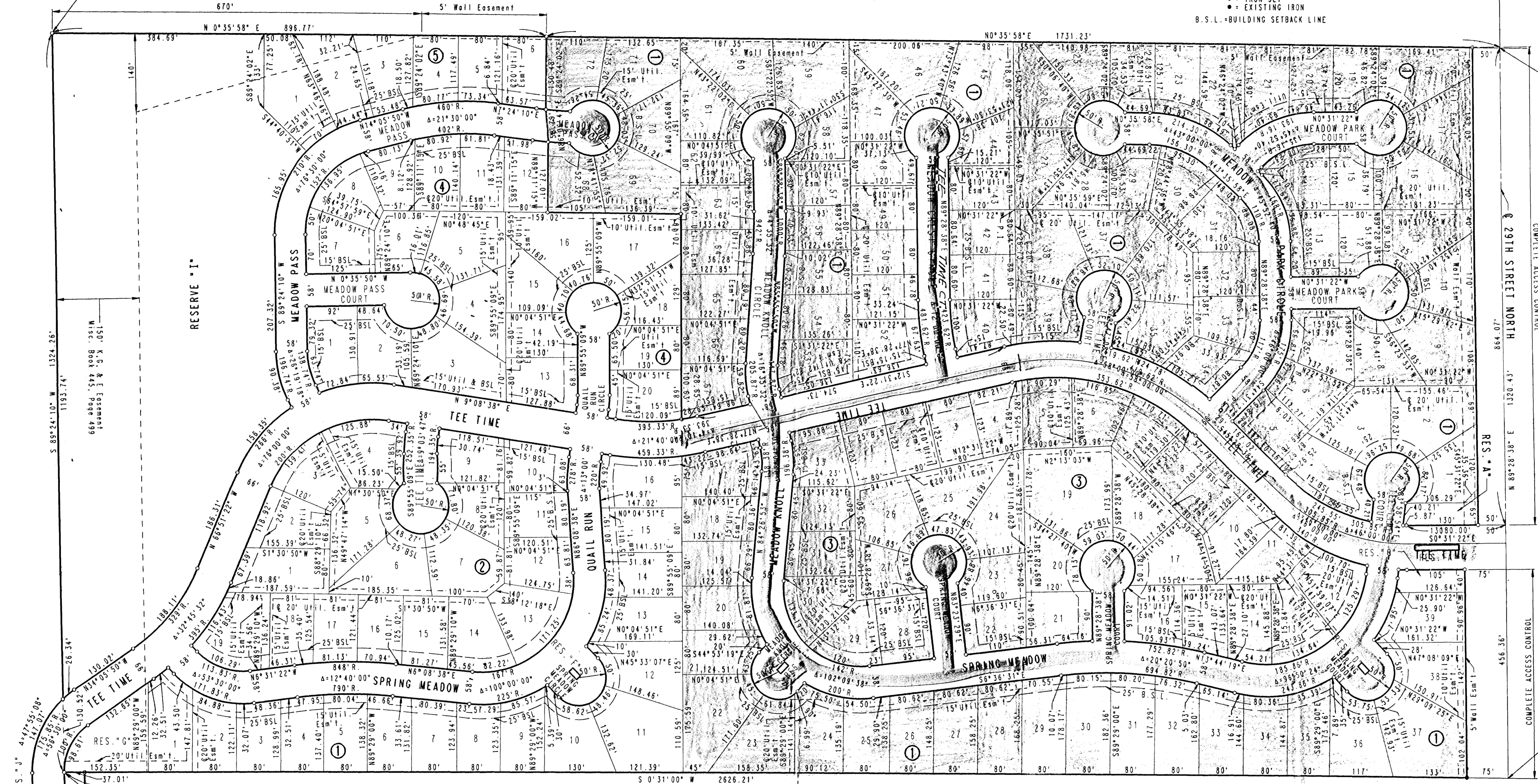
SCALE: 1"=100'  
 ○ = IRON SET  
 ● = EXISTING IRON  
 B.S.L. = BUILDING SETBACK LINE

B.M. - CHISELED "x" N.E. CORNER 3-7'x3' RIB  
 BRIDGE ON RIDGE ROAD 175 FEET NORTH  
 OF S.E. CORNER N.E. 1/4, T27S, R1W  
 ELEV. = 1325.64 M.S.L.  
 CITY DATUM

S.W. CORNER N.E. 1/4  
 SEC. 4, T27S, R1W  
 OF THE 6TH P.M.

N.W. CORNER N.E. 1/4  
 SEC. 4, T27S, R1W  
 OF THE 6TH P.M.

N.E. CORNER WEST 1/2, N.E. 1/4  
 SEC. 4, T27S, R1W OF THE 6TH P.M.



PLAN	SURVEYED	BY	DATE
NOTE BOOK PLOTTED			
ALIGNMENT CHECKED			
RT. OF WAY CHECKED			

150' K.G. & E. Easement  
 Misc. Book 445, Page 499

S.W. CORNER EAST 1/2, N.E. 1/4  
 S.E. CORNER WEST 1/2, N.E. 1/4,  
 SEC. 4, T27S, R1W OF THE 6TH P.M.  
 Utility Easement  
 SOUTH 37 FEET RESERVE "B"  
 REFLECTION RIDGE 6TH ADDITION  
 TO WICHITA, SEDGWICK COUNTY, KANSAS

*Paving*

- Phase 1
- Phase 2
- Phase 3

DRAWING NAME: 34-91658 Plot Phases  
 LOCATION: SFMO 04 #1127  
 CENTER COORDINATES:  
 DATE LAST WORKED ON: Feb. 07, 1992  
 SPECIAL INSTRUCTIONS: