

# REFLECTION RIDGE 7TH & 8TH ADDITION TO WICHITA, SEDGWICK COUNTY, KANSAS

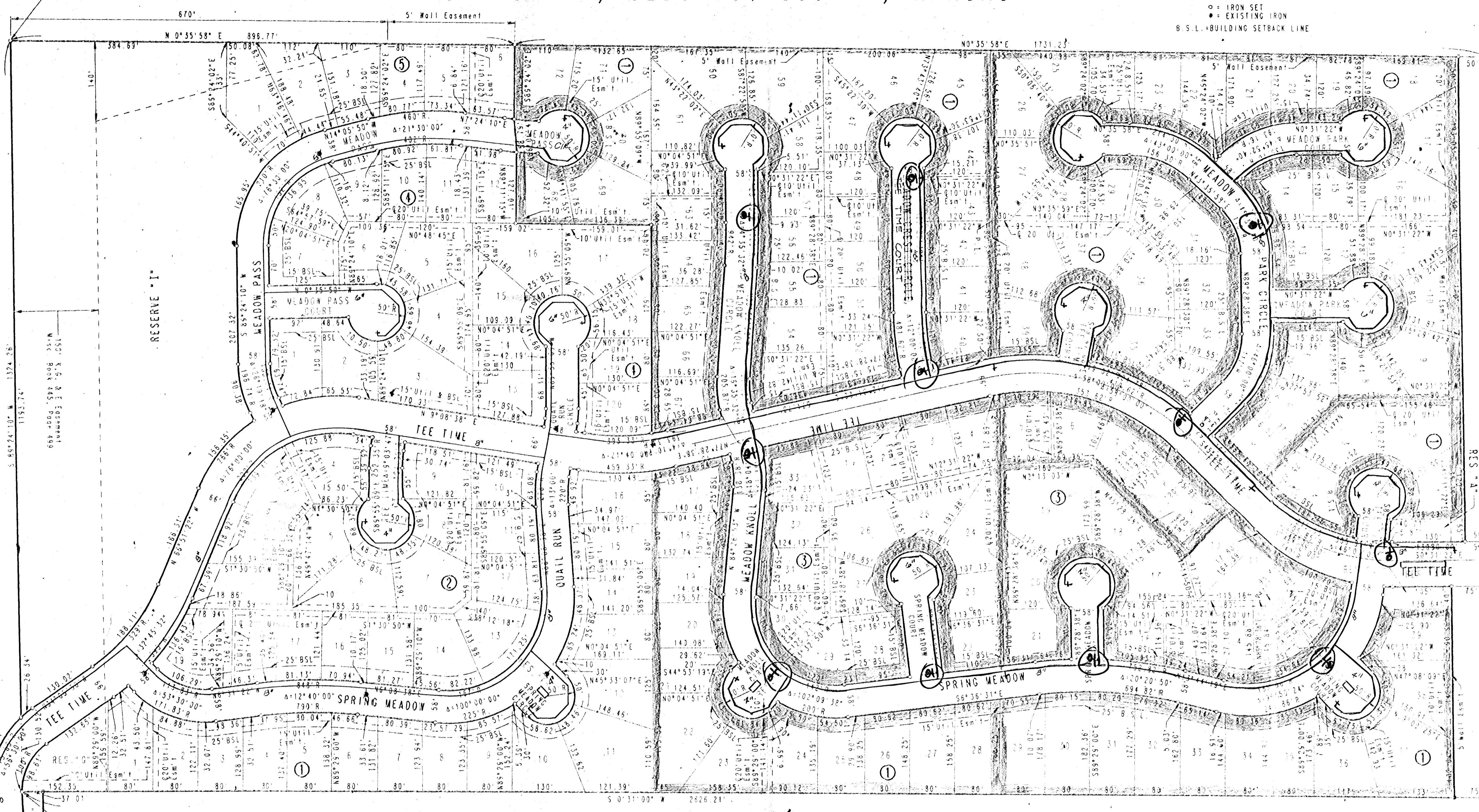
SCALE: 1" = 100'  
 ○ = IRON SET  
 ● = EXISTING IRON  
 B.S.L. = BUILDING SETBACK LINE

B.M. CHISELED \*\* N.E. CORNER 3-7' 43" RIB  
 BRIDGE ON RIDGE ROAD 175 FEET NORTH  
 OF S.E. CORNER N.E. 1/4, T27S, R1W  
 ELEV. = 1325.64 M.S.L.  
 ELEV. = CITY DATUM

N.W. CORNER N.E. 1/4  
 SEC. 4, T27S, R1W  
 OF THE 6TH P.M.

N.E. CORNER WEST 1/2, N.E. 1/4  
 SEC. 4, T27S, R1W OF THE 6TH P.M.

PLAN	SURVEYED	DATE
NO.	BY	
NO.	BY	
NO.	BY	
NO.	BY	
NO.	BY	



**WATER MAINS**  
 PHASE 1 [Hatched Pattern]  
 PHASE 2 [Dotted Pattern]  
 PHASE 3 [Solid Grey]

**PLANS REVIEWED**  
 FIRE PREVENTION BUREAU  
 CITY OF WICHITA  
 DATE 2/11/92 BY JAKATA

11 N.Y. 201573

DRAWING NAME: 34-51689 Plat Phases  
 CENTER POINT: 125.41127  
 ROTATION ANGLE:  
 DATE LAST WORKED ON: Feb. 07, 1992  
 SPECIAL INSTRUCTIONS:

S.W. CORNER EAST 1/2, N.E. 1/4  
 S.E. CORNER WEST 1/2, N.E. 1/4  
 SEC. 4, T27S, R1W OF THE 6TH P.M.  
 Utility Easement  
 SOUTH 37 FEET RESERVE 'B'  
 REFLECTION RIDGE 6TH ADDITION  
 TO WICHITA, SEDGWICK COUNTY, KANSAS

REFLECTION ROAD  
 EAST 12" WATER