

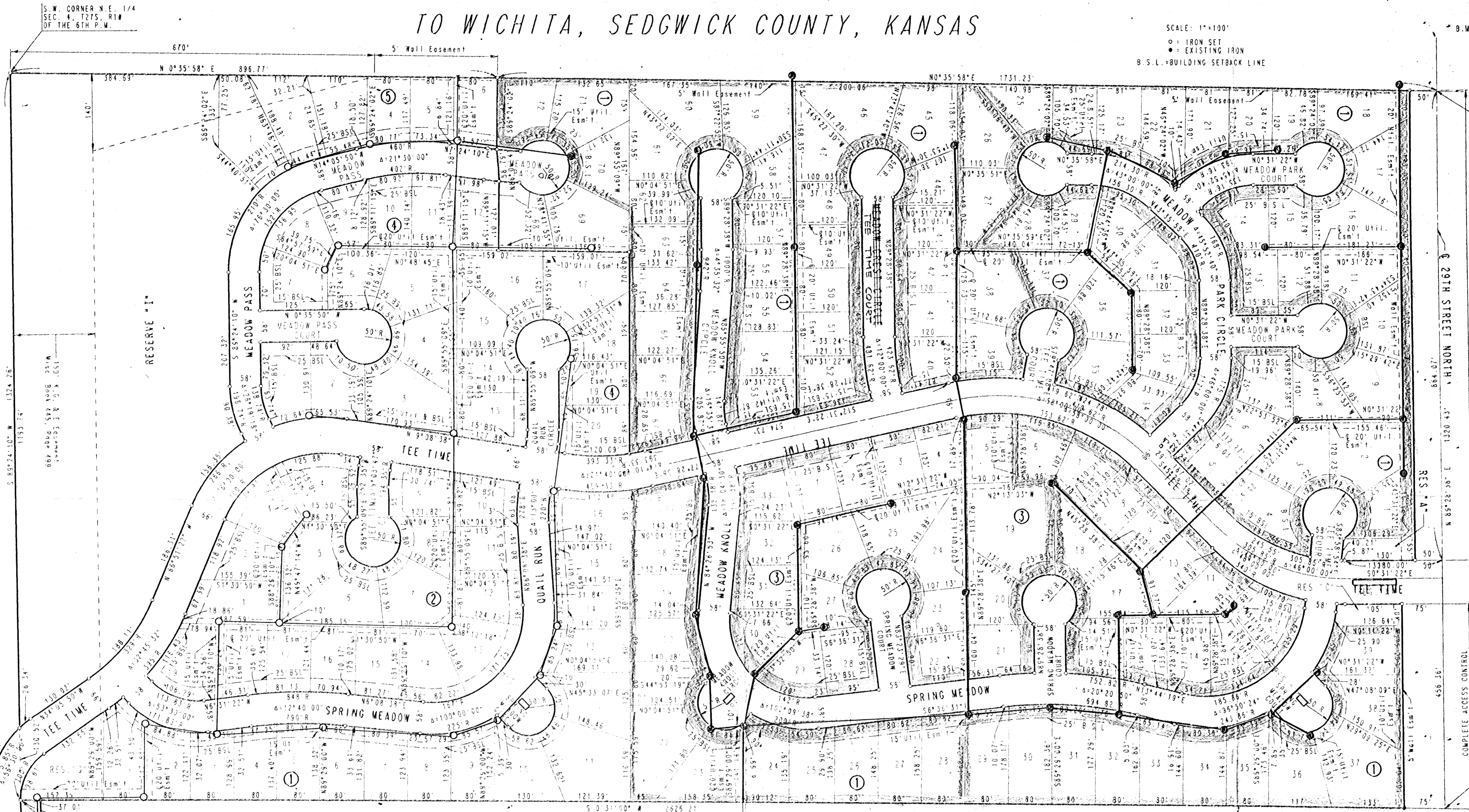
REFLECTION RIDGE 7TH & 8TH ADDITION TO WICHITA, SEDGWICK COUNTY, KANSAS

SCALE: 1"=100'
 ○ IRON SET
 ● EXISTING IRON
 B.S.L. = BUILDING SETBACK LINE

B.M. CHISELED "X" N.E. CORNER 3-7' 13" R18
 BRIDGE ON RIDGE ROAD 175 FEET NORTH
 OF S.E. CORNER N.E. 1/4, 127S, R1W
 ELEV. = 1325.64 M.S.L.
 ELEV. = CITY DATUM

N.W. CORNER N.E. 1/4
 SEC. 4, 127S, R1W
 OF THE 6TH P.M.

N.E. CORNER WEST 1/2, N.E. 1/4
 SEC. 4, 127S, R1W OF THE 6TH P.M.



PLAN	SURVEYED	BY	DATE
NOTE BOOK	PLOTTED		
	ALIGNED		
	CHECKED		
	NO.		
	INT. OF WAY		
	CHECKED		

DRAWING NAME: 34-91659 Plot Phases
 DRAFTING: J.L.O., D. J. 1/27
 CENTER COORDINATES:
 ROTATION ANGLE:
 DATE LAST WORKED ON: Feb. 07, 1992
 SPECIAL INSTRUCTIONS:

SANITARY SEWER
 PHASE 1
 PHASE 2

S.W. CORNER EAST 1/2, N.E. 1/4
 CORNER WEST 1/2, N.E. 1/4
 SEC. 4, 127S, R1W OF THE 6TH P.M.
 Utility Easement
 SOUTH 37 FEET RESERVE "B"
 REFLECTION RIDGE 8TH ADDITION
 TO WICHITA, SEDGWICK COUNTY, KANSAS

REFLECTION ROAD

COMPLETE ACCESS CONTROL

COMPLETE ACCESS CONTROL