


REFLECTION RIDGE 7TH ADDITION TO WICHITA, SEDGWICK COUNTY, KANSAS

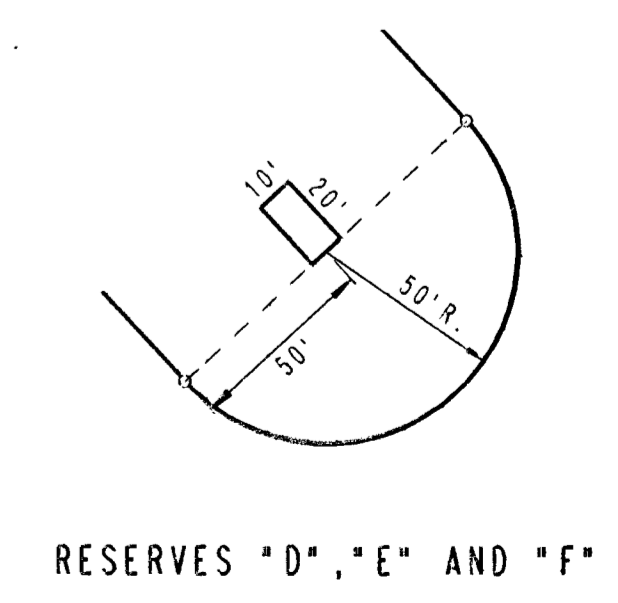
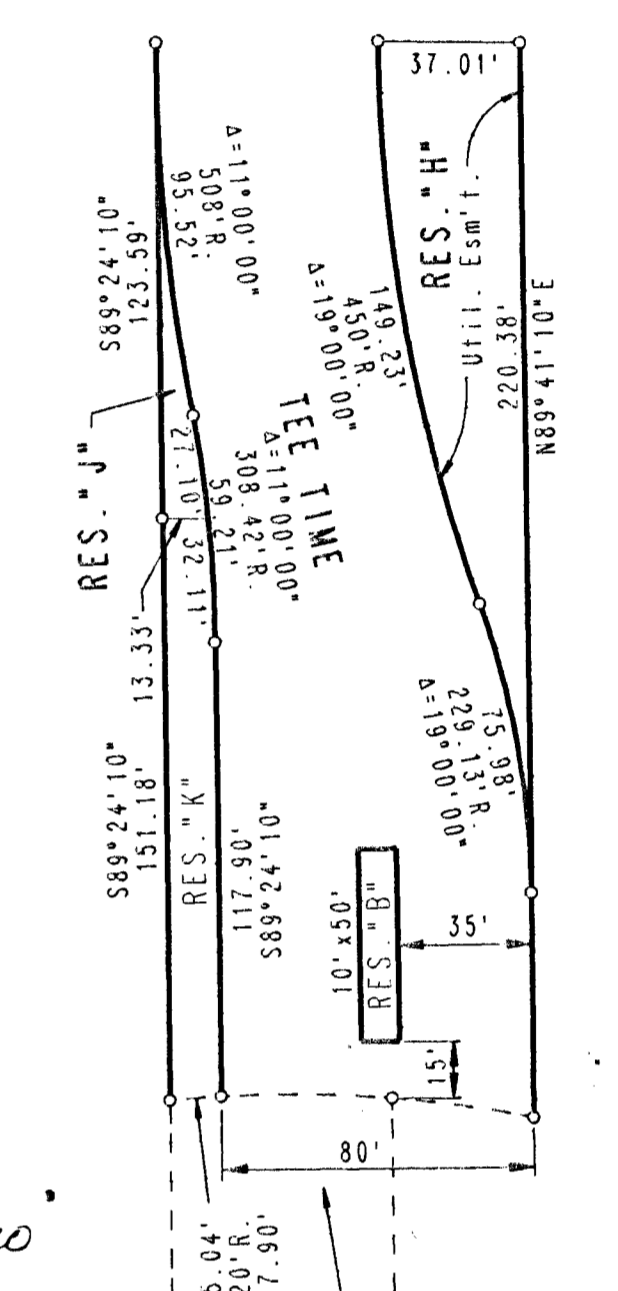
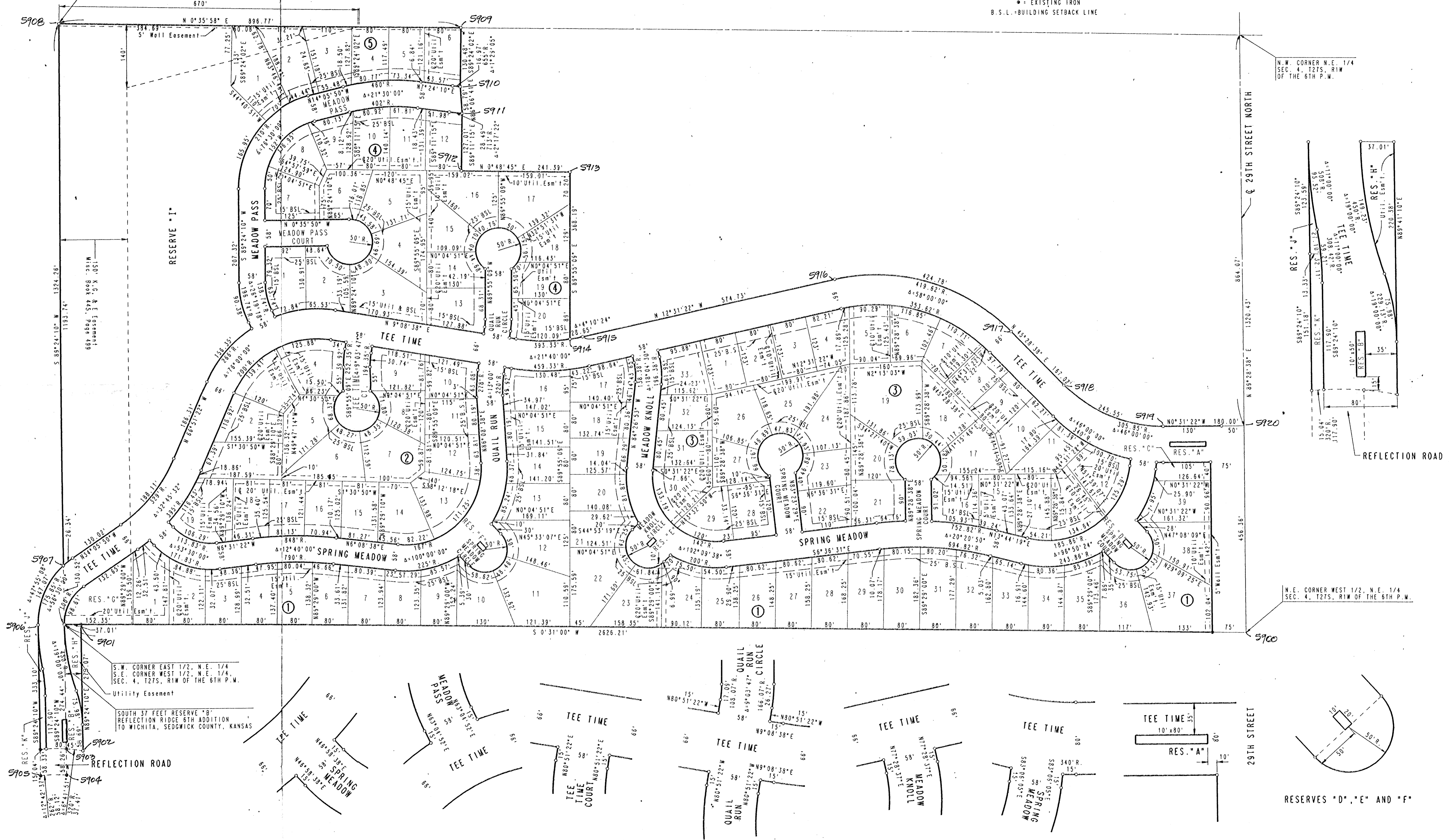

 SCALE: 1"=100'
 ○ = IRON SET
 ● = EXISTING IRON
 B.S.L. = BUILDING SETBACK LINE

B.M. - CHISELED "A" N.E. CORNER 3-7'x3' R18
 BRIDGE ON RIDGE ROAD 175 FEET NORTH
 OF S.E. CORNER N.E. 1/4, T27S, R1W
 ELEV. = 1325.64 M.S.L.
 CITY DATUM

S.W. CORNER N.E. 1/4
SEC. 4, T27S, R1W
OF THE 6TH P.W.

N.W. CORNER N.E. 1/4
SEC. 4, T27S, R1W
OF THE 6TH P.W.

N.E. CORNER WEST 1/2, N.E. 1/4
SEC. 4, T27S, R1W OF THE 6TH P.W.



RESERVE "I"

150' K.C. & E. Easement
Misc. Book 445, Page 499

S.W. CORNER EAST 1/2, N.E. 1/4
S.E. CORNER WEST 1/2, N.E. 1/4,
SEC. 4, T27S, R1W OF THE 6TH P.W.
Utility Easement

SOUTH 37 FEET RESERVE "B"
REFLECTION RIDGE 6TH ADDITION
TO WICHITA, SEDGWICK COUNTY, KANSAS

RESERVES "D", "E" AND "F"