

PRELIMINARY PLAT **REVISED COPY**

TRINKLE ADDITION

SEDGWICK COUNTY, KANSAS

(SW 1/4 SEC. 12, T28S, R2W)

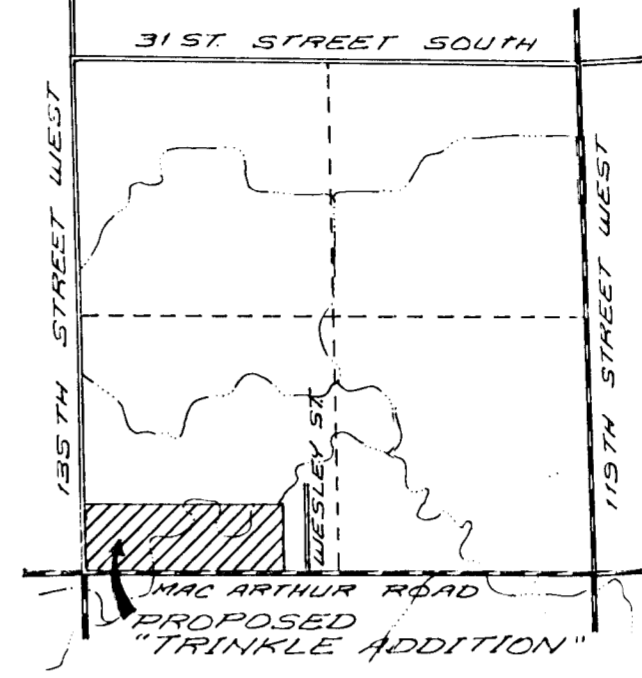
Owners/Subdividers: Karen S. Long
 16171 West Hiway 54, #182
 Goddard, Kansas 67052
 Tele: 794-8514

Wesley G. Trinkle
 16171 West Hiway 54, #179
 Goddard, Kansas 67052
 Tele: 794-8154

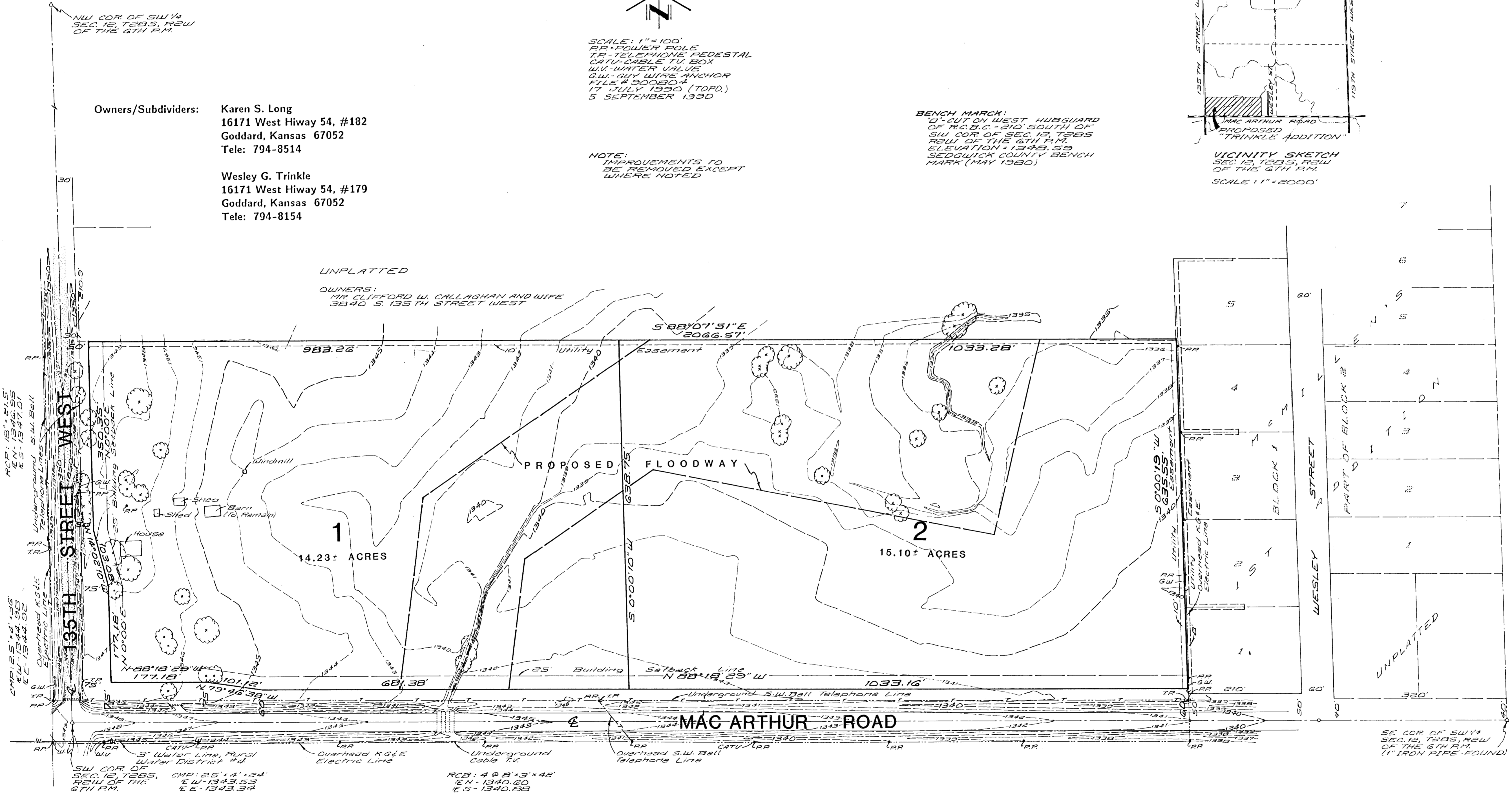
SCALE: 1" = 100'
 RP - POWER POLE
 TP - TELEPHONE PEDESTAL
 CATV - CABLE TV BOX
 UV - WATER VALVE
 GW - GUY WIRE ANCHOR
 FILE # 000804
 17 JULY 1990 (TOPD.)
 5 SEPTEMBER 1990

NOTE:
 IMPROVEMENTS TO
 BE REMOVED EXCEPT
 WHERE NOTED

BENCH MARK:
 "I" CUT ON WEST HUBGUARD
 OF R.C.B.C. - 210' SOUTH OF
 SW COR OF SEC. 12, T28S
 R2W OF THE 6TH P.M.
 ELEVATION = 1343.59
 SEDGWICK COUNTY BENCH
 MARK (MAY 1980)



VICINITY SKETCH
 SEC. 12, T28S, R2W
 OF THE 6TH P.M.
 SCALE: 1" = 2000'



RCP: 187.515
 EN - 1347.01
 ES - 1347.01

CMP: 25.14.26
 EN - 1344.98
 ES - 1344.98

SW COR OF
 SEC. 12, T28S, R2W
 OF THE 6TH P.M.
 CMP: 25.14.26
 EN - 1343.53
 ES - 1343.54

RCP: 4 @ B * 3 * 42
 EN - 1340.60
 ES - 1340.58

SE COR OF SW 1/4
 SEC. 12, T28S, R2W
 OF THE 6TH P.M.
 ("IRON PIPE" FOUND)