

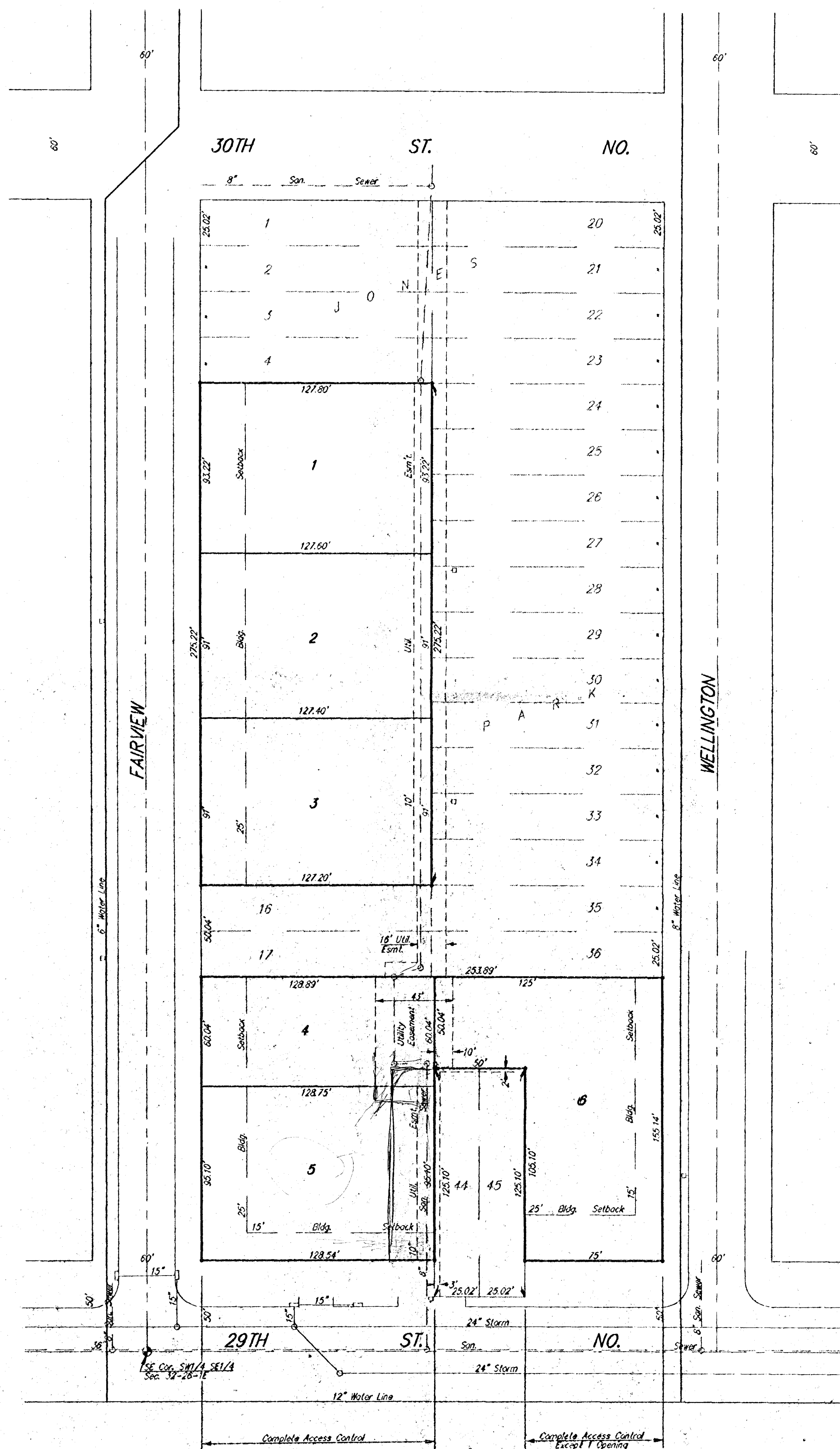
SKETCH PLAT TRACHTMAN 2ND ADDITION

WICHITA, SEDGWICK COUNTY, KANSAS

LOTS 2 AND 3, TRACHTMAN ADDITION
BERNARD H. TRACHTMAN
& FLORENCE TRACHTMAN

MENNONITE HOUSING REHABILITATION
SERVICE, INC.

THOMAS A. BISHOP, PRESIDENT
2145 N. TOPEKA
WICHITA, KANSAS 67214
PH: 265-7558



Scale: 1" = 40'
B.M. - Top Iron in
Thumb - E 29th &
Fairview - E1 125.47