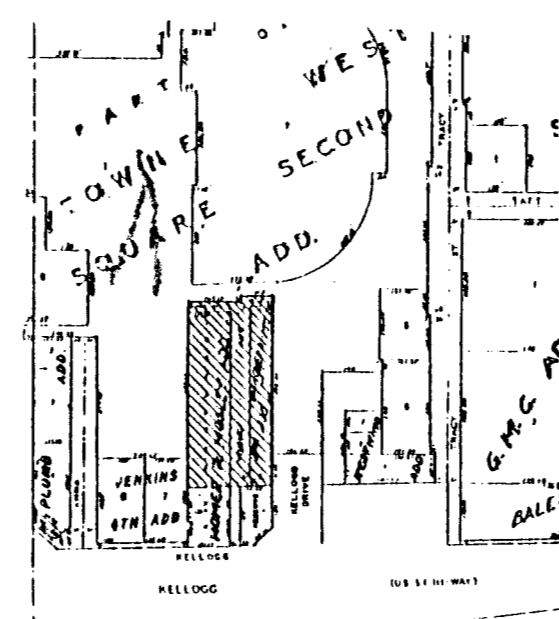


PRELIMINARY PLAT
TOY'S "R" US ADDITION

PART OF HOMER R MOSLEY ADDITION
 AND HOMER R MOSLEY 2ND ADDITION
 AND VACATED STREETS

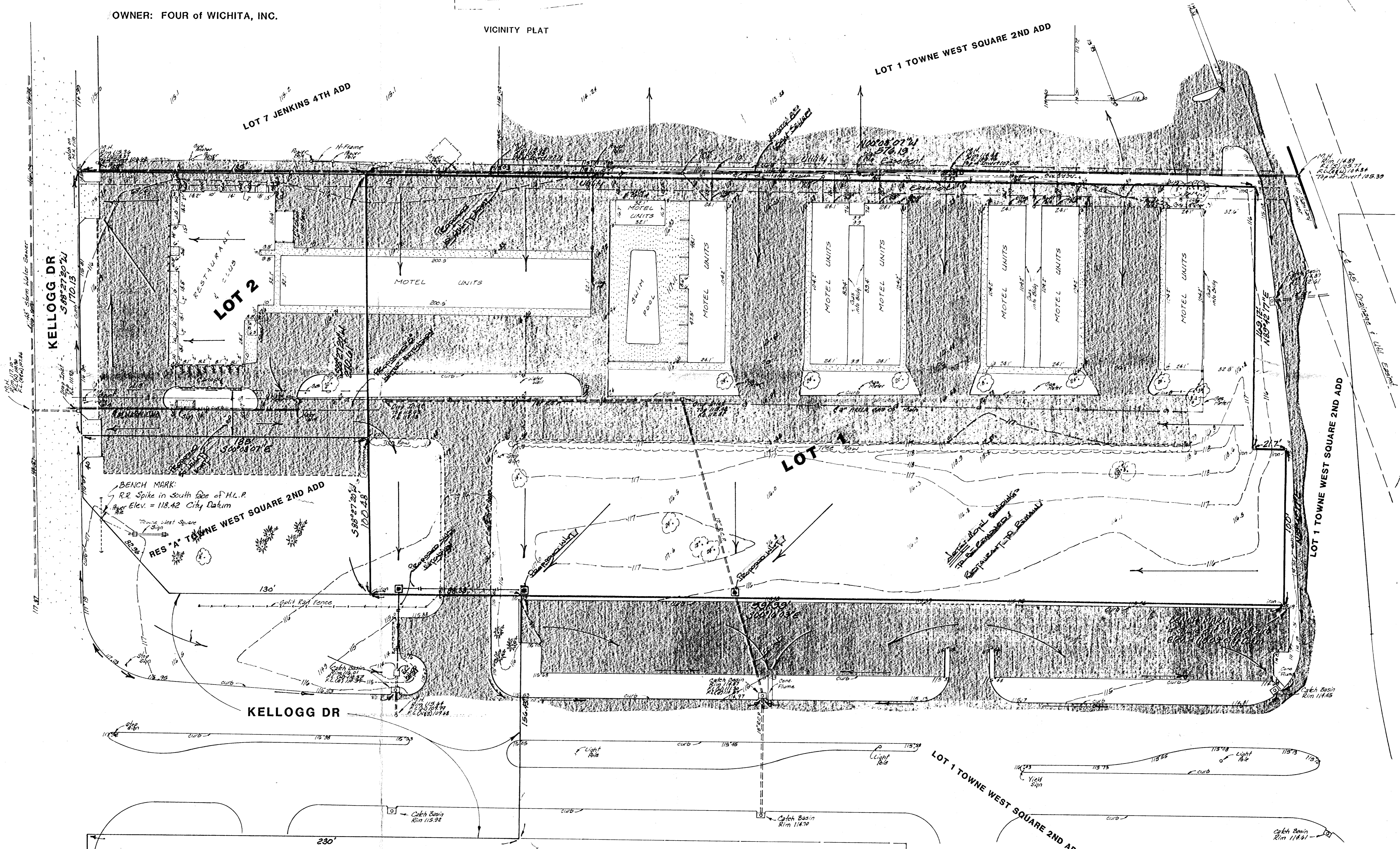
OWNER: FOUR of WICHITA, INC.



VICINITY PLAT

SCALE 1"=30'
 ELEVATIONS = CITY DATUM

KELLOGG ST (US 54 HIGHWAY)



DRAINAGE & UTILITY CONCEPT

BAUGHMAN COMPANY, P.A.
 SURVEYING & ENGINEERING
 316/252-7271 • 314 FILLIS • WICHITA, KANSAS 67211

7 APRIL 1988