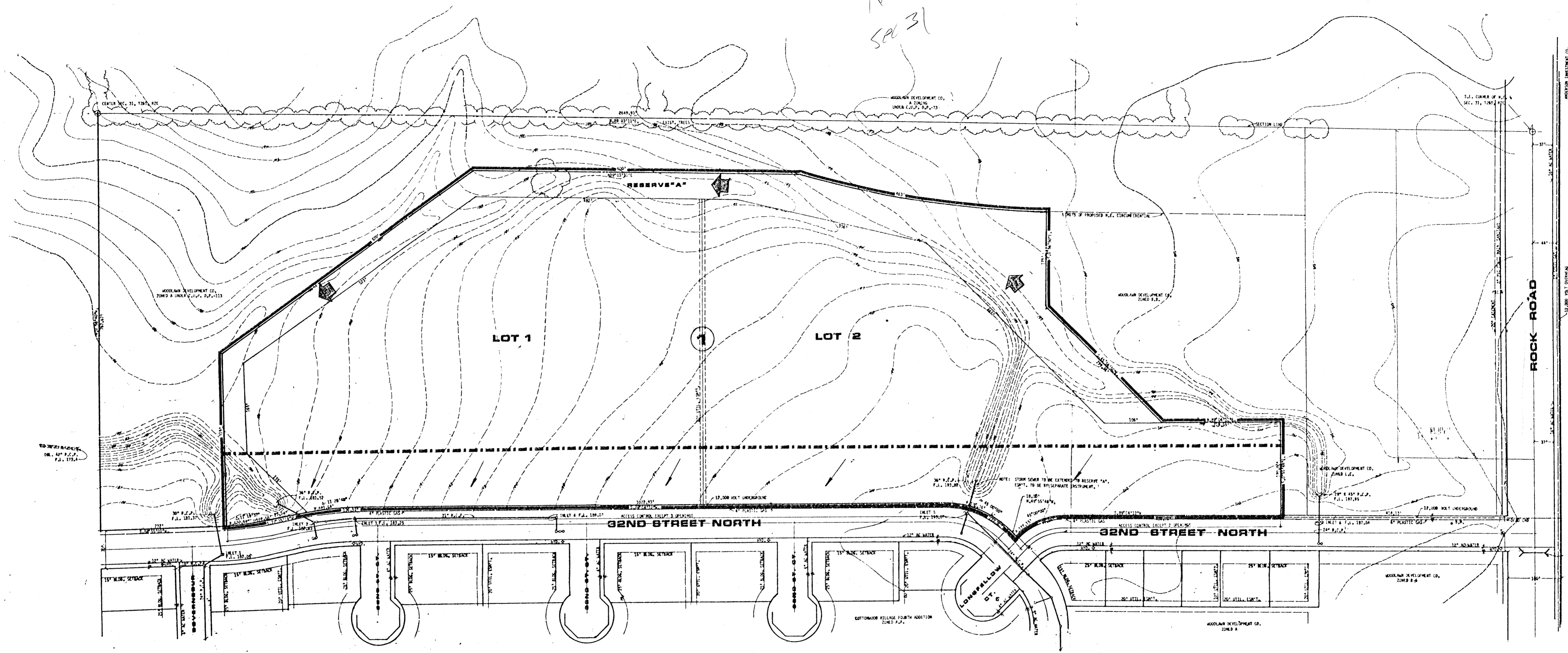


NE 1/4
SEC 31



DRAINAGE CONCEPT PLAN FOR
 PRELIMINARY PLAT A PORTION OF C.U.P. D.P. 113
TOWNEHOMES OF GREENBROOK ADD.



NOTE: ALL OTHER UTILITY AND DRAINAGE EASEMENTS SHALL BE BY SEPARATE INSTRUMENT.
 RESERVE "A" FOR DRAINAGE, UTILITIES, OPEN SPACE AND RECREATION.
 DISTANCE AS PER C.U.P. D.P. 113 GENERAL PROVISION NO. 4
 DRAINAGE CONCEPT TO BE PREPARED AND SUBMITTED BY P.E.C.
 BENCHMARK: CHS 562 6" ON NORTH CURB 100' WEST OF ROCK ROAD ON 32ND STREET NORTH. ELEV. 204.86