

TOWNE WEST SQUARE SECOND ADDITION

WICHITA, SEDGWICK COUNTY, KANSAS

SHEET NO 1 OF 2

State of Kansas } ss
County of Sedgwick }

I, Robert L. Castle, Engineer in aforesaid County and State do hereby certify that I caused to be surveyed and platted "TOWNE WEST SQUARE SECOND ADDITION", Wichita, Sedgwick County, Kansas, and the accompanying plat is a true and correct exhibit of such survey. The platted property is a replat of "TOWNE WEST SQUARE ADDITION", Wichita, Sedgwick County, Kansas, said platted property is a tract in the North Half of Section 26, Township 27 South, Range 1 West of the Sixth Principal Meridian, Wichita, Sedgwick County, Kansas, described as follows: Beginning at a point 80 feet South of the North line and on the West line of the Northeast Quarter of said Section 26 said point being on the South right of way line of Maple Street; thence 208.27 feet on a bearing of North 89 degrees 39 minutes 40 seconds East along the South right of way line of Maple Street;

thence 550.00 feet on a bearing of South 00 degrees 02 minutes 20 seconds East; thence 726.00 feet on a bearing of North 89 degrees 39 minutes 40 seconds East; thence 160.00 feet on a bearing of South 00 degrees 02 minutes 20 seconds West; thence 150.00 feet on a bearing of North 89 degrees 39 minutes 40 seconds East; thence 410.00 feet on a bearing of North 00 degrees 02 minutes 20 seconds West

to the South right of way line of Maple Street; thence 193.95 feet on a bearing of North 89 degrees 39 minutes 40 seconds East along the South right of way line of Maple Street to the West right of way line of Tracy Street; thence along the Westerly right of way line of Tracy Street with the following distances and bearings from the preceding course;

thence 629.80 feet on a bearing of South 00 degrees 40 minutes 59 seconds West; thence 510.00 feet on a bearing of South 00 degrees 02 minutes 21 seconds East; thence 12.00 feet on a bearing of South 89 degrees 57 minutes 37 seconds West; thence 464.34 feet on a bearing of South 00 degrees 03 minutes 42 seconds East; thence 12.00 feet on a bearing of North 89 degrees 55 minutes 55 seconds East; thence 427.58 feet on a bearing of South 00 degrees 04 minutes 05 seconds East;

thence from the West right of way line of Tracy Street with the following distances and bearings from the preceding course;

thence 154.89 feet on a bearing of South 89 degrees 41 minutes 05 seconds West; thence 250.00 feet on a bearing of North 00 degrees 04 minutes 05 seconds West; thence 190.00 feet on a bearing of South 89 degrees 41 minutes 53 seconds West; thence 250.73 feet on a bearing of North 00 degrees 04 minutes 05 seconds East

to the Northeast Corner of Kellogg Drive; thence 156.43 feet on a bearing of South 89 degrees 41 minutes 53 seconds West along the North right of way line of Kellogg Drive;

thence 493.61 feet on a bearing of North 00 degrees 16 minutes 03 seconds West; thence 100.00 feet on a bearing of South 89 degrees 42 minutes 17 seconds West; thence 21.70 feet on a bearing of South 00 degrees 00 minutes 57 seconds East; thence 169.12 feet on a bearing of South 89 degrees 42 minutes 17 seconds West; thence 489.95 feet on a bearing of South 00 degrees 08 minutes 07 seconds East; thence 289.61 feet on a bearing of South 89 degrees 41 minutes 45 seconds East

to the East right of way line of Anna Avenue; thence 377.93 feet on a bearing of North 00 degrees 08 minutes 30 seconds West along the East right of way line of Anna Avenue;

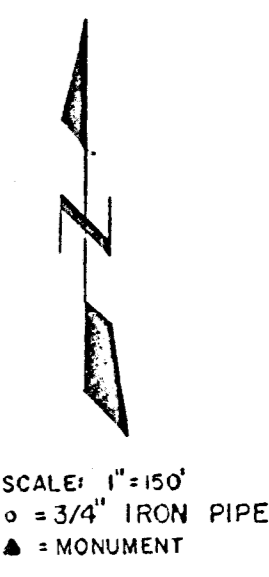
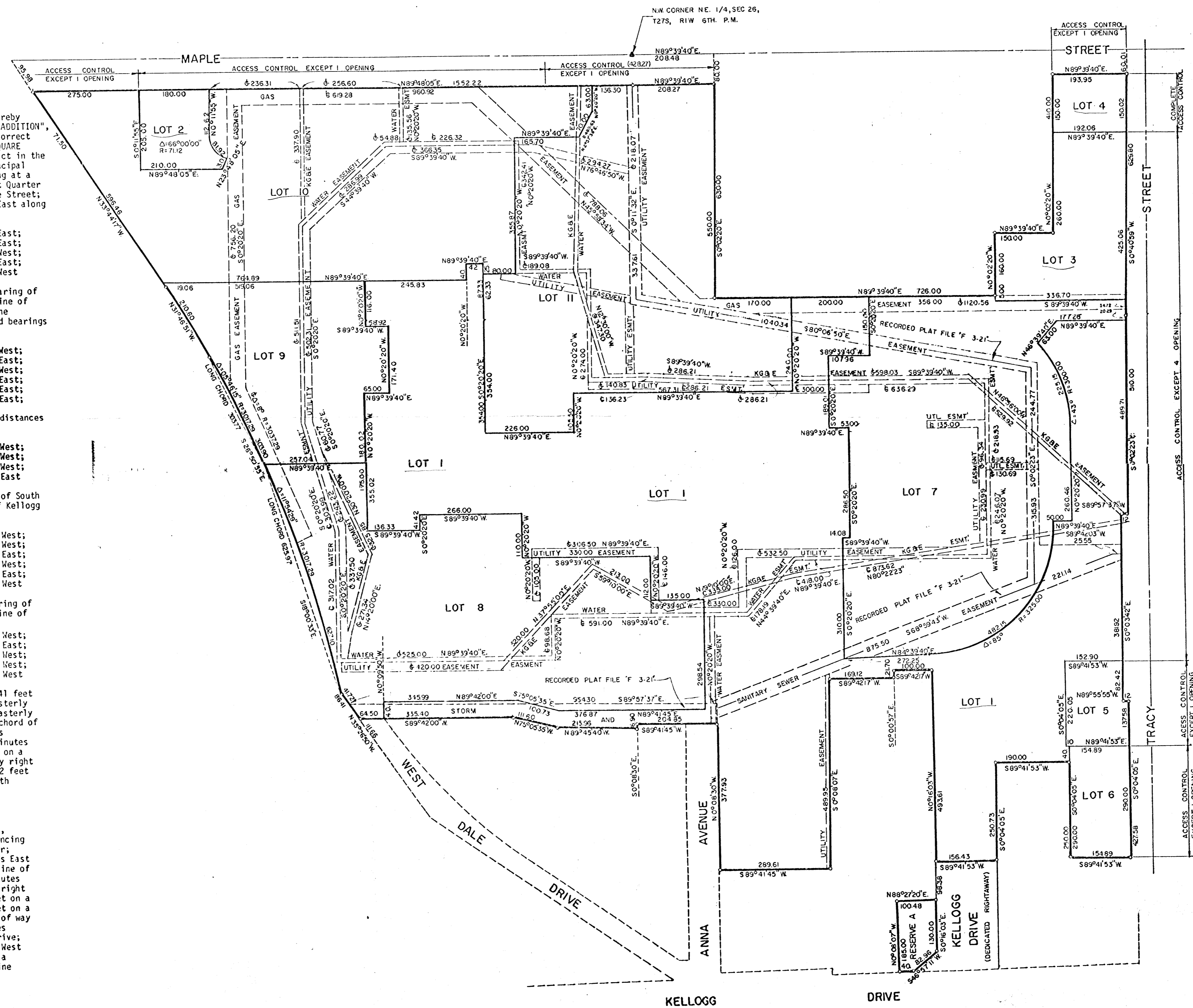
thence 204.85 feet on a bearing of South 89 degrees 41 minutes 45 seconds West; thence 8.90 feet on a bearing of South 00 degrees 08 minutes 30 seconds East; thence 215.96 feet on a bearing of North 89 degrees 45 minutes 40 seconds West; thence 111.60 feet on a bearing of North 75 degrees 05 minutes 35 seconds West; thence 399.90 feet on a bearing of South 89 degrees 42 minutes 00 seconds West

to a point on the Easterly right of way line of Highway I 235; thence 86.41 feet on a bearing of North 35 degrees 26 minutes 50 seconds West along said Easterly right of way line; thence 931.00 feet on a curve to the left along said Easterly right of way line said curve having a radius of 3017.29 feet with a long chord of 927.31 feet, the bearing of said long chord is North 20 degrees 53 minutes 40 seconds West; thence 210.60 feet on a bearing of North 31 degrees 46 minutes 51 seconds West along said Easterly right of way line; thence 615.52 feet on a bearing of North 33 degrees 44 minutes 17 seconds West along said Easterly right of way line to the South right of way line of Maple Street; thence 1552.22 feet on a bearing of North 89 degrees 48 minutes 05 seconds East along the South right of way line of Maple Street to the point of beginning.

and

A tract of land in the Northeast Quarter of Section 26, Township 27 South, Range 1 West of the Sixth Principal Meridian described as follows: Commencing at the Northeast Corner of the Southwest Quarter of said Northeast Quarter; thence 1043.04 feet on a bearing of South 00 degrees 04 minutes 05 seconds East along the East line of said Southwest Quarter to the North right of way line of Kellogg Drive; thence 657.42 feet on a bearing of South 88 degrees 27 minutes 20 seconds West along the North right of way line and the extended North right of way line of Kellogg Drive to the point of beginning; thence 185.00 feet on a bearing of North 00 degrees 08 minutes 07 seconds West; thence 100.48 feet on a bearing of North 88 degrees 27 minutes 20 seconds East to the West right of way line of Kellogg Drive; thence 130.00 feet on a bearing of South 00 degrees 16 minutes 03 seconds East along the West right of way line of Kellogg Drive; thence 82.96 feet on a bearing of South 46 degrees 57 minutes 11 seconds West along the Westerly right of way line of Kellogg Drive; thence 40 feet on a bearing of South 88 degrees 27 minutes 20 seconds West along the North line of Kellogg Drive to the point of beginning.

Robert L. Castle Engineer



EASEMENT DIMENSIONS ARE CENTERLINE (C-) DISTANCES FROM THE CENTERLINE INTERSECTIONS