

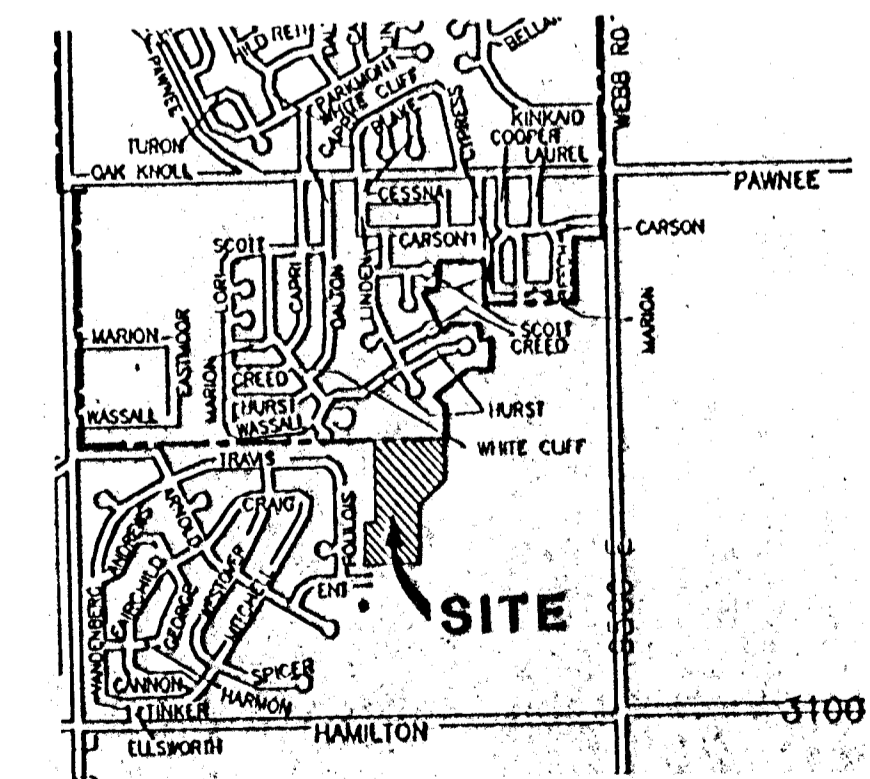
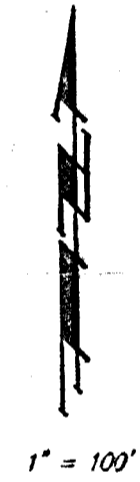
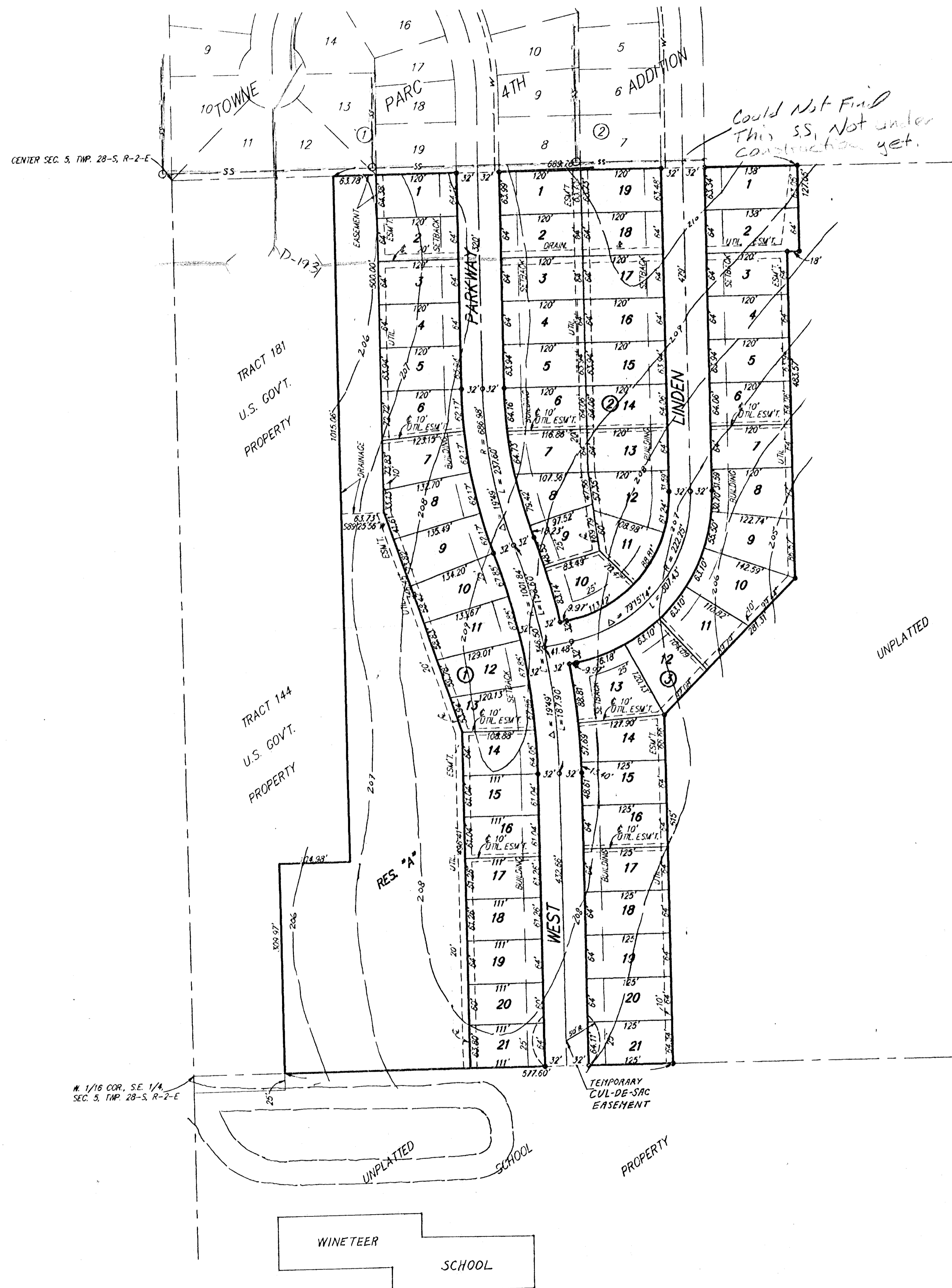
PRELIMINARY PLAT TOWNE PARC 5TH ADDITION

WICHITA, SEDGWICK COUNTY, KANSAS

OWNER: I.T.J. INVESTMENTS, INC.
IRMA N. JACOBY, PRESIDENT

LEGAL: UNPLATED TRACT IN THE S.E. 1/4, SEC. 5, TWP. 28-S, R-2-E

BENCH MARK: CITY STANDARD DISC 48' S. & 2' E. OF THE N.W. COR.,
N.E. 1/4, SEC. 5, TWP. 28-S, R-2-E
ELEV. = 192.205 (CITY DATUM)



VICINITY MAP