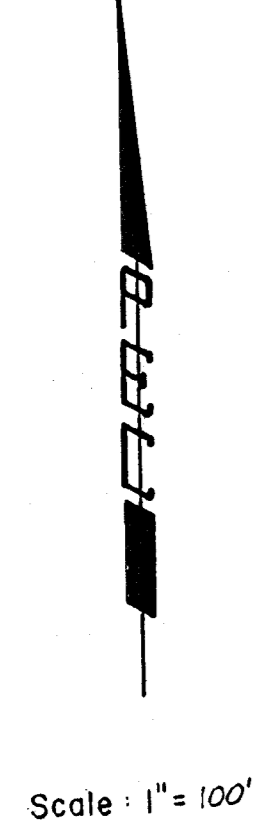
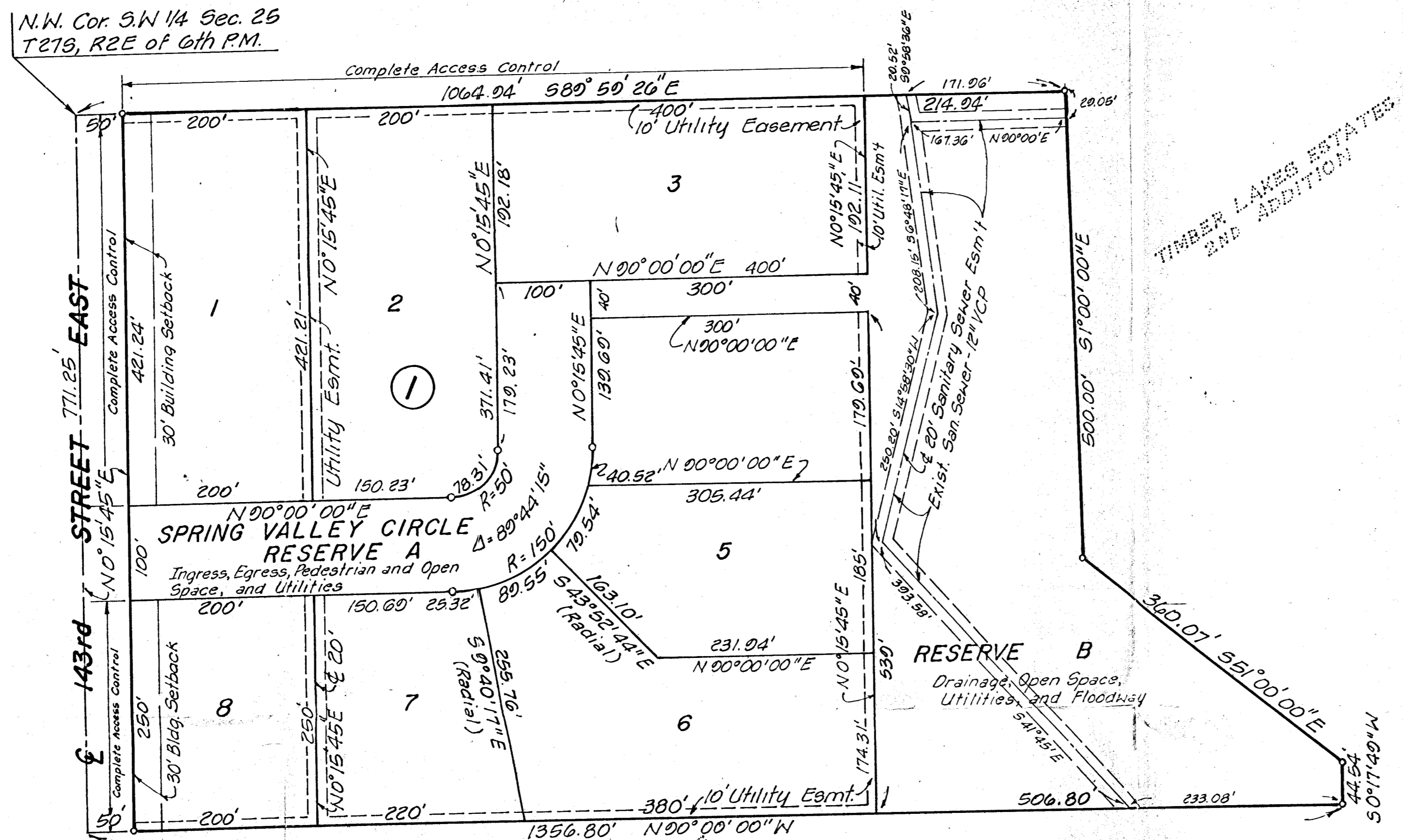


# LAKECREST ESTATES

## SEDGWICK COUNTY, KANSAS



B.M. - N.W. Cor. W. Wheel Well at Bridge on 143rd Street East approx. 1220' N. of Harry Street. Elev. 1301.86 MSL

State of Kansas  
County of Sedgwick

I, R.W. Linn, a Professional Engineer in aforesaid State and County, do hereby certify that on this \_\_\_\_\_ day of \_\_\_\_\_, 1981, I have caused to be surveyed and platted "LAKECREST ESTATES," Sedgwick County, Kansas, into Lots, a Block, a Street, and Reserves, more particularly described as: Beginning at the NW Corner of the SW 1/4 of Section 25, Township 27 South, Range 2 East of the 6th P.M.; thence along the north line of said SW 1/4 bearing S89°59'26\"/>

R.W. Linn, P.E.  
No. 3684

Know all men by these presents that we, the undersigned property owners of the land as above set forth in the Engineer's certificate, have caused the land to be surveyed and platted into Lots, a Block, a street, and reserves, the same to be known as "LAKECREST ESTATES," Sedgwick County, Kansas. Easements, as indicated for the construction and maintenance of Public Utilities are hereby granted. The street is hereby dedicated to and for the use of the public. Reserves, as indicated for Ingress, Egress, Pedestrian and open space, floodway, Utilities, and Drainage, are hereby granted. The floodway shall be the responsibility of the owners of those lots abutting the floodway until such time as the governing body exercising jurisdiction elects to assume the responsibility for maintenance and improvement of the floodway, provided further that no building(s) shall be constructed on or within said floodway, nor shall any fill, change of grade, creation of channel, or other work be carried on without the permission of the Wichita-Sedgwick County Flood Control Office or their successors of office. All abutters' rights of access to and from 143rd Street East over and across the west line of Lots 1 & 8, Block 1, and over and across the north line of Lots 1, 2, & 3, Block 1, are hereby granted to the City of Wichita or the appropriate governing body.

\_\_\_\_\_ Owner  
Daniel M. Carney  
Professional Engineering Consultants, P.A. by:  
\_\_\_\_\_ President  
Carl O. Knop  
\_\_\_\_\_ Secretary-Treasurer  
Ronald D. Pletcher

State of Kansas SS  
County of Sedgwick

Be it remembered that on this \_\_\_\_\_ day of \_\_\_\_\_, 1981, before me, a Notary Public in aforesaid State and County, came Daniel M. Carney, to me personally known to be the same person who executed the foregoing instrument of writing and duly acknowledge the execution of same as the voluntary act and deed of said person, in testimony whereof I have hereunto set my hand and affixed my notarial seal the day and year above written.

\_\_\_\_\_ Notary Public  
My Commission Expires: \_\_\_\_\_

State of Kansas SS  
County of Sedgwick

Be it remembered that on this \_\_\_\_\_ day of \_\_\_\_\_, 1981, before me, a Notary Public in aforesaid State and County, came Professional Engineering Consultants, P.A., by its' President, Carl O. Knop, and its' Secretary-Treasurer, Ronald D. Pletcher, to me personally known to be the same persons who executed the foregoing instrument of writing and duly acknowledge the same for and on behalf and as the act and deed of said company, in testimony whereof I have hereunto set my hand and affixed my notarial seal the day and year above written.

\_\_\_\_\_ Notary Public  
My Commission Expires: \_\_\_\_\_

This is to certify that this instrument was filed for record in the Register of Deeds Office at \_\_\_\_\_ m. on this \_\_\_\_\_ day of \_\_\_\_\_, 1981.

\_\_\_\_\_ Register of Deeds  
Bette F. McCart  
\_\_\_\_\_ Deputy  
Pat Kettler

This plat approved and all dedications shown hereon are accepted by the Board of County Commissioners of Sedgwick County, Kansas. Dated this \_\_\_\_\_ day of \_\_\_\_\_, 1981.

\_\_\_\_\_ Chairman  
Donald E. Gragg  
\_\_\_\_\_ Commissioner  
Jack Spratt  
\_\_\_\_\_ Commissioner  
Tom Scott

Attest:  
\_\_\_\_\_ County Clerk  
Dorothy K. White

Entered on Transfer Record this \_\_\_\_\_ day of \_\_\_\_\_, 1981.

\_\_\_\_\_ County Clerk  
Dorothy K. White

This plat has been submitted to and approved by the Wichita-Sedgwick County Metropolitan Area Planning Commission, Wichita, Kansas. Dated this \_\_\_\_\_ day of \_\_\_\_\_, 1981.

\_\_\_\_\_ Chairman  
Alvin J. Hennessy  
\_\_\_\_\_ Secretary  
Robert A. Lakin

This plat approved and all dedications shown hereon are accepted by the City Commission of the City of Wichita, Kansas. Dated this \_\_\_\_\_ day of \_\_\_\_\_, 1981.

\_\_\_\_\_ Mayor  
R.C. Brown  
\_\_\_\_\_ City Clerk  
Donald C. Gisick