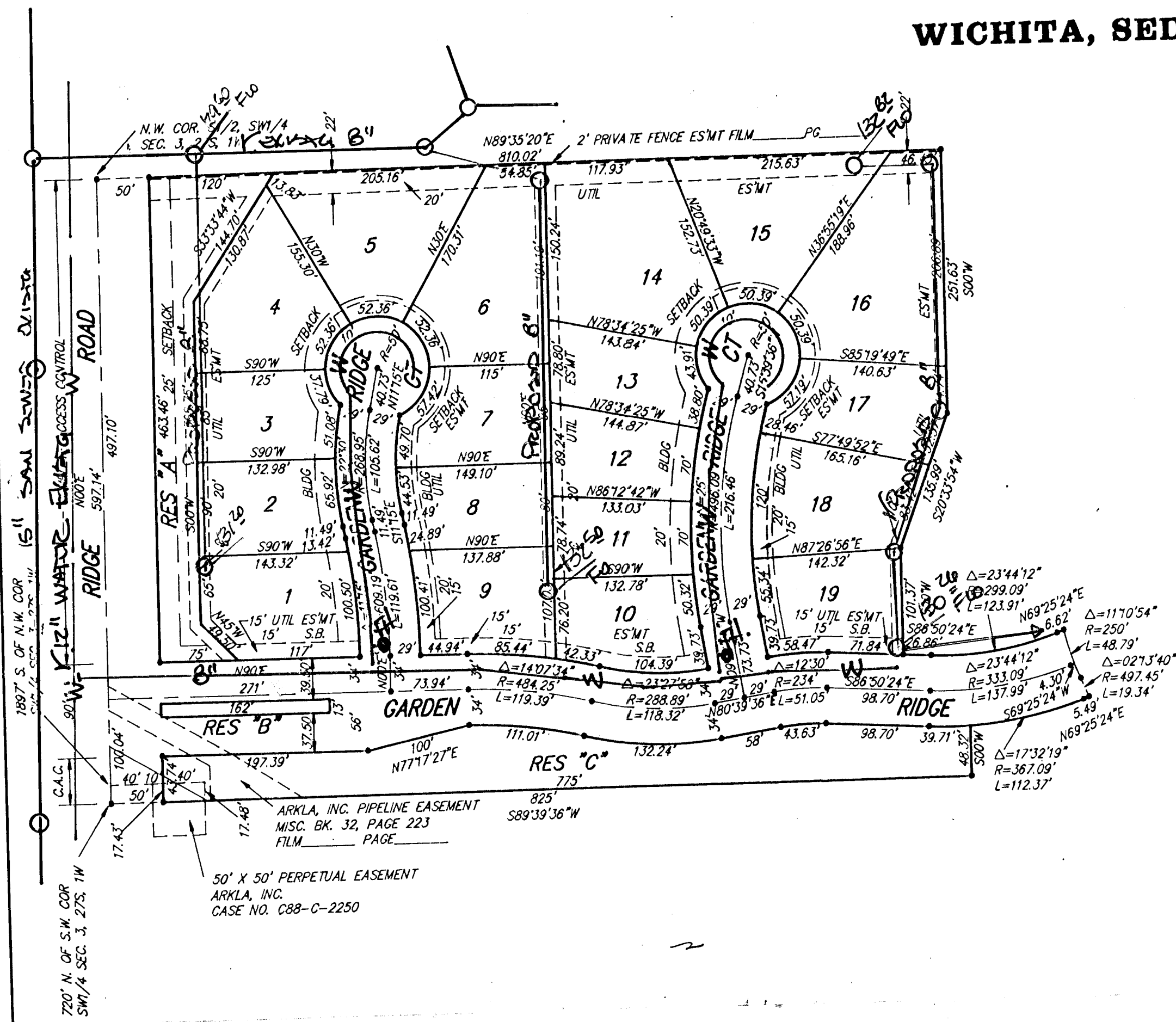


UTILITY PLAN 4/30/92 - LAKE RIDGE ADDITION

WICHITA, SEDGWICK COUNTY, KANSAS



This plat of "LAKE RIDGE ADDITION", Wichita, Sedgwick County, Kansas has been submitted to and approved by the Wichita-Sedgwick County Metropolitan Area Planning Commission, Wichita, Kansas.
Dated this _____ day of _____ 1992.
Wichita-Sedgwick County Metropolitan Area Planning Commission

Chairman
Christopher J. Gobel

Secretary
Marvin S. Krout

This plat approved and all dedications shown hereon accepted by the City Council of the City of Wichita, Kansas, this _____ day of _____ 1992.

Mayor
Bob Knight

Deputy City Clerk
Pat Burnett

State of Kansas) SS This is to certify that this plat has been
Sedgwick County) filed for record in the office of the Register of Deeds, this _____ day
of _____ 1992, at _____ o'clock _____ M, and is duly

Register of Deeds
Pat Kettler

Deputy
Ed Resa

State of Kansas) SS We, Baughman Company, P.A., Surveyors in
Sedgwick County) aforesaid County and State do hereby certify that we have surveyed
and platted "LAKE RIDGE ADDITION", Wichita, Sedgwick County, Kansas
and that the accompanying plat is a true and correct exhibit of the
property surveyed, described as follows: That part of the S1/2 of
the SW1/4 of Sec. 3, Twp. 27-S, R-1-W of the 6th P.M., Sedgwick
County, Kansas, described as commencing at the S.W. Corner of said
SW1/4; thence N 00° E, along the west line of said SW1/4, 720
feet for a place of beginning; thence N 00° E, along the west line
of said SW1/4, 597.14 feet to the N.W. Corner of the S1/2 of said
SW1/4; thence N 89°35'20" E, along the north line of the S1/2 of
said SW1/4, 810.02 feet; thence S 00° W, 251.63 feet; thence
S 20°33'54" W, 135.99 feet; thence S 00° W, 101.37 feet; thence
S 86°50'24" E, 26.86 feet to the P.C. of a curve to the left, having
a radius of 299.09 feet and a central angle of 23°44'12"; thence
northeasterly, along said curve, an arc distance of 123.91 feet (having
a chord bearing N 81°17'30" E, 123.02 feet to the P.T. of said curve;
thence N 69°25'24" E, 6.62 feet to a point on a curve, having a
radius of 250 feet; thence southeasterly, along said curve to the
left, through a central angle of 11°10'54", an arc distance of 40.79
feet, (having a chord bearing S 18°21'04" E, 48.71 feet) to the P.R.C.
of a curve to the right, having a radius of 497.45 feet; thence
southeasterly, along said curve and through a central angle of 02°13'40",
an arc distance of 19.34 feet, (having a chord bearing S 22°49'41" E,
19.34 feet; thence S 69°25'24" W, 5.49 feet to the P.C. of a curve
to the right, having a radius of 367.09 feet; thence westerly, along
said curve and through a central angle of 17°32'19", an arc distance
of 112.37 feet, (having a chord bearing S 78°11'34" W, 111.93 feet;
thence S 00° W, 48.32 feet to a point 720 feet north of the south
line of said SW1/4; thence S 89°39'36" W, 825 feet to the place of
beginning.

Existing public easements and dedications being vacated by
virtue of K.S.A. 12-512(b).

Baughman Company, P.A.

Date _____
Surveyor
Mark A. Savoy

Know all men by these presents that we,
the undersigned, have caused the land in the surveyors certificate to
be platted into Lots, Reserves and streets to be known as "LAKE
RIDGE ADDITION", Wichita, Sedgwick County, Kansas. Reserves "A"
and "C" are hereby reserved for earthberms, landscaping, sidewalks,
bike trails, lighting, irrigation, drainage, signage, gazebos, entry mon-
uments, and utilities confined to easements. Reserve "B" is hereby
reserved for entry monuments, landscaping, irrigation and as street
and utility easement. The reserves shall be owned and maintained
by the homeowners association for the addition. The utility ease-
ments are hereby granted as indicated for the construction and maint-
enance of all public utilities. The streets are hereby dedicated to
and for the use of the public. All abutters rights of access to or
from Ridge Road over and across the west line of Reserves "A" and
"C" are hereby granted to the City of Wichita, Kansas.

Lakeridge Investors, L.C., a Kansas Limited Liability Company

President
Santo M. Catanese

State of Kansas) SS The foregoing instrument acknowledged be-
Sedgwick County) fore me, this _____ day of _____ 1992, by Santo M.
Catanese, President of Lakeridge Investors, L.C., a Kansas Limited
Liability Company, on behalf of the corporation.

Notary Public

My App't. Exp. _____

Entered on transfer record this _____ day
of _____ 1992.

County Clerk
Don Wright

We, the undersigned, holders of a mortgage
on the above described property, do hereby consent to this plat of
"LAKE RIDGE ADDITION", Wichita, Sedgwick County, Kansas.
State Bank of Colwich

Vice-President
Chris A. Anderson

State of Kansas) SS The foregoing instrument acknowledged be-
Sedgwick County) fore me, this _____ day of _____ 1992, by Chris A.
Anderson, Vice-President of State Bank of Colwich, on behalf of the
corporation.

Notary Public

My App't. Exp. _____