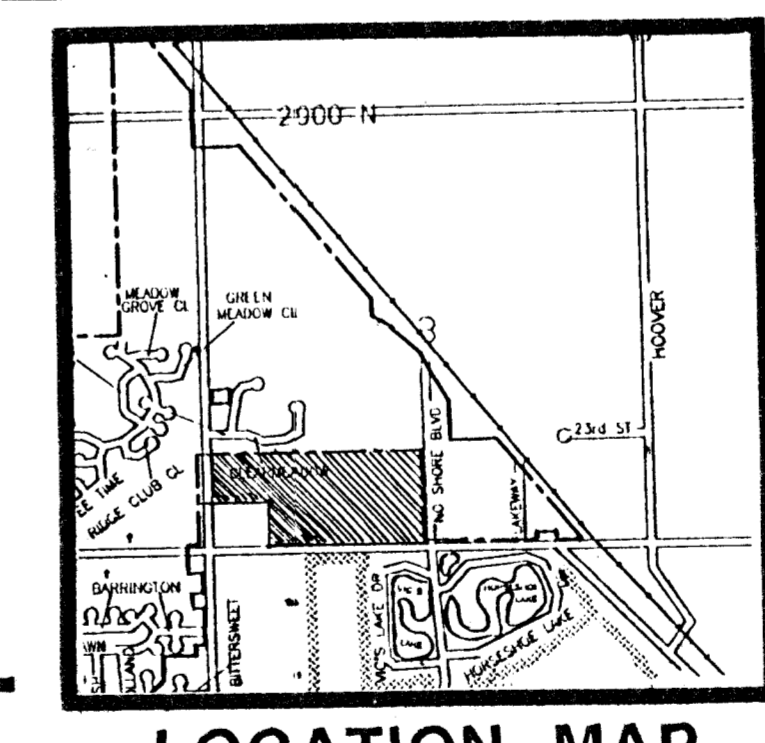
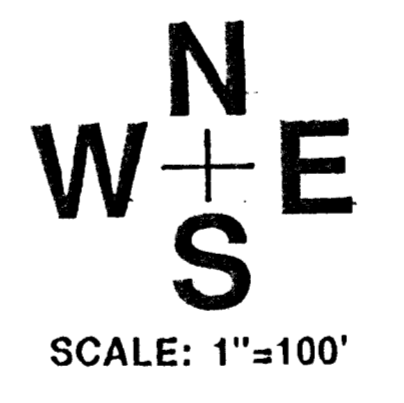


FAMILY MEDICAL ASSOC. ZONED LC
 SEDGWICK COUNTY ZOO 2ND ADDITION ZONED L.C.

LEGEND:
 S.F. - SINGLE FAMILY
 P.H. - PATIO HOMES
 Z.L.L. - ZERO LOT LINE
 D.P. - DUPLEX
 T.H. - TOWNHOUSES
 APART. - APARTMENTS
 2 PARCEL NUMBER

SEDGWICK COUNTY ZOO 2ND ADDITION ZONED R-1



TOTAL AREA- 61.1 AC.

COMMUNITY UNIT PLAN DP- LAKE RIDGE RESIDENTIAL

OWNER: LAKE RIDGE INVESTORS L.C., 800 MARKET CENTER, 155 N. MARKET, WICHITA, KS. 67202 PH. 265-2727