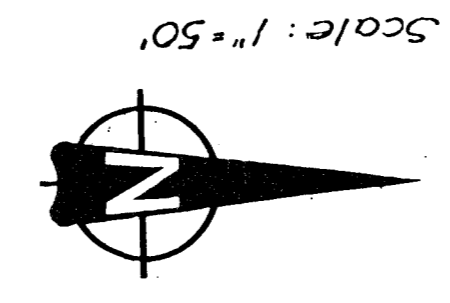
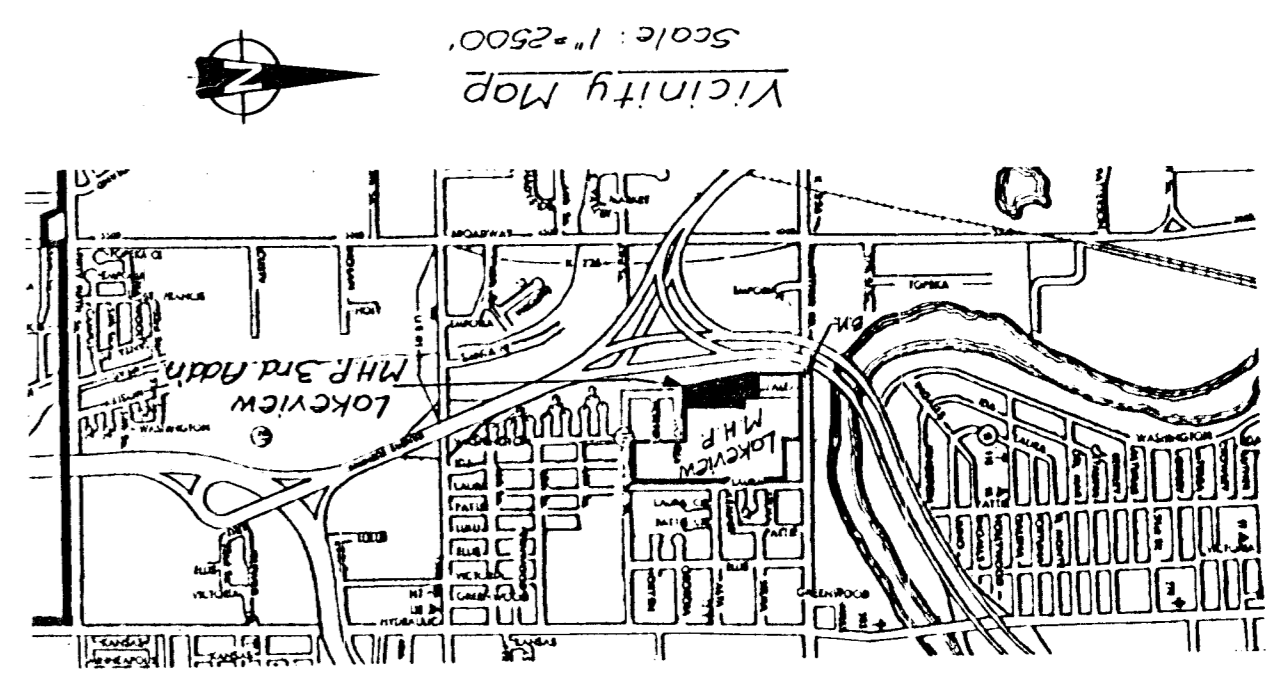
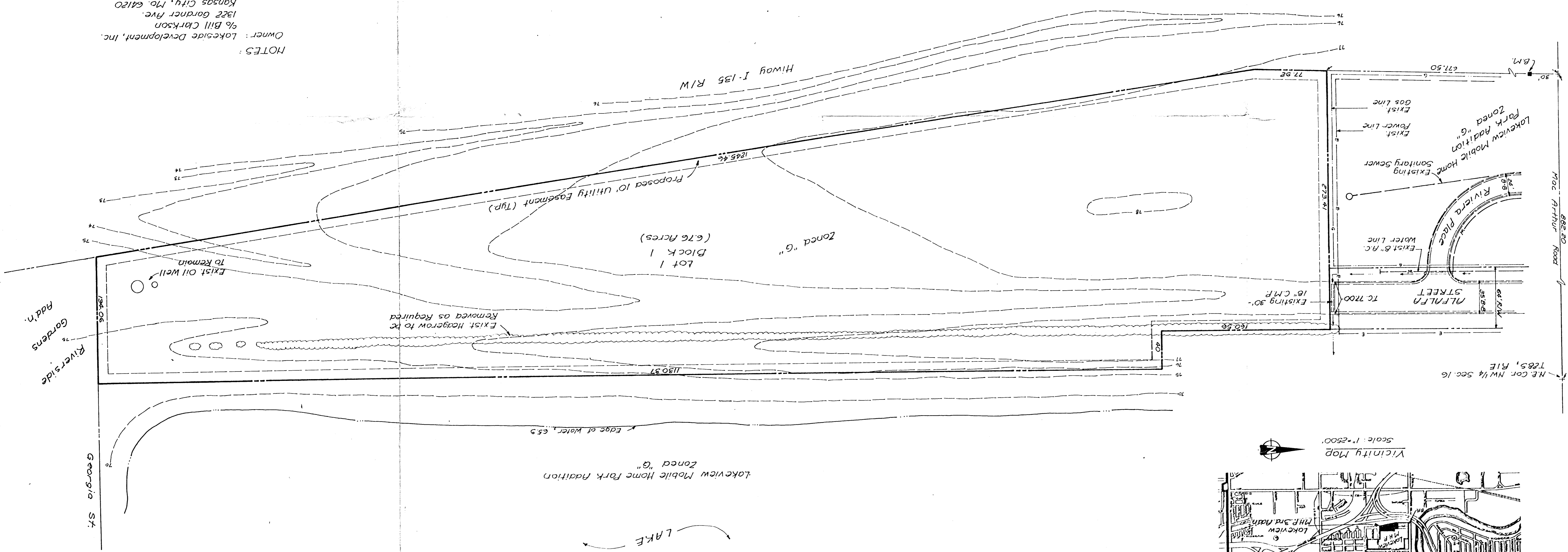


1983  
 PETER & GOODRICH ENGINEERS  
 2100 WEST 21<sup>ST</sup> STREET  
 WICHITA, KANSAS 67204  
 (913) 833-0223

PRELIMINARY PLAT  
 Lakeview Mobile Home Park Third Addition  
 to  
 Wichita, Sedgwick County, Kansas



NOTES:  
 Owner: Lakeside Development, Inc.  
 % Bill Clarkson  
 1322 Gardner Ave.  
 Kansas City, Mo. 64120  
 Date of Topographic Survey: 11-16-82  
 B.M.: Top of concrete R/W Marker, 20' North  
 of the NW corner of Lot 1, Block 1, Lakeview  
 Mobile Home Park. Elev. 1278.61 U.S.G.S.  
 Existing zoning is "G"



N.E. COR. NW 1/4 SEC. 16  
 T8S, R1E

MacArthur Road

ALFALFA STREET  
 TO 7700'

Exist. 8" R.C.  
 Water Line

Exist. Sanitary Sewer

Exist. Power Line

Exist. Gas Line

Lakeview Mobile Home  
 Park Addition  
 Zoned "G"

673.41'

77.92'

B.M.

677.50'

Lakeview Mobile Home Park Addition  
 Zoned "G"  
 Edge of Water, 65.9'

LAKE

Georgia St.

Riverside  
 Gardens  
 Add'n.

Exist. Oil Well  
 To Remain

Exist. Hoggerow to be  
 Removed as Required

Proposed 10' Utility Easement (TYP)

Lot 1  
 Block 1  
 (6.76 Acres)  
 Zoned "G"

Highway I-135 R/W

