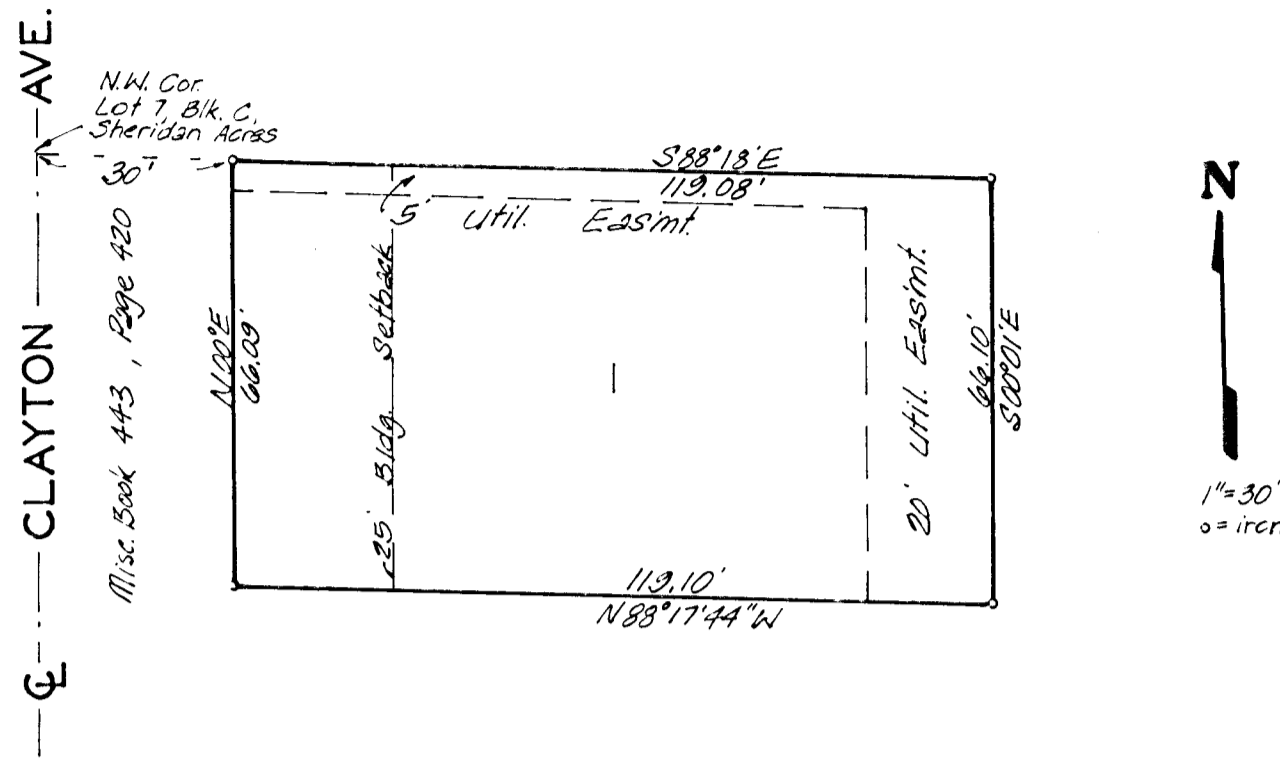


MILDREDS ADDITION

WICHITA, KANSAS



State of Kansas 7 ss. Sedgwick County 3 ss. we, Baughman Company, P.A. Surveyors in aforesaid county and state do hereby certify that we have surveyed and platted "MILDREDS ADDITION," Wichita, Kansas, and that the accompanying plat is a true and correct exhibit of the property surveyed, described as Lot 7, except the south 66 feet, and except the east 150 feet, and except the west 30 feet thereof, Block C, Sheridan Acres, Sedgwick County, Kansas.

 Baughman Company, P.A.
 Date _____
 John E. Lundblade Surveyor

This plat of "MILDREDS ADDITION," Wichita, Kansas, has been submitted to and approved by the Wichita-Sedgwick County Metropolitan Area Planning Commission, Wichita, Kansas. Dated this 29th day of November 1985.

Wichita-Sedgwick County Metropolitan Area Planning Commission
 _____ Chairman
 James O. Wilson
 _____ Secretary
 Robert A. Lakin

Know all men by these presents that I, the undersigned, have caused the land described in the surveyors certificate to be platted into a lot to be known as "MILDREDS ADDITION," Wichita, Kansas. The utility easements are hereby granted as indicated for the construction and maintenance of all public utilities.

 Mildred M. Winters
 Mildred M. Winters

This plat approved and all dedications shown hereon accepted by the Board of Commissioners of the City of Wichita, Kansas, this 30th day of APRIL 1985.

 Robert C. Smith Mayor
 _____ City Clerk
 Donald C. Sisk

State of Kansas 7 ss. Sedgwick County 3 ss. The foregoing instrument was acknowledged before me this 28th day of March 1985, by Mildred M. Winters, a single person.

My App. Exp. 12 May 1988
 _____ Notary Public
 Mark A. Sneyd

Entered on transfer record
 this _____ day of _____ 1985.

 Don Wright County Clerk

State of Kansas 7 ss. Sedgwick County 3 ss. This is to certify that this plat has been filed for record in the office of the Register of Deeds this _____ day of _____ 1985, at _____ o'clock _____ M; and is duly recorded.

 Pat Kehler Register of Deeds
 _____ Deputy
 Ed Resa