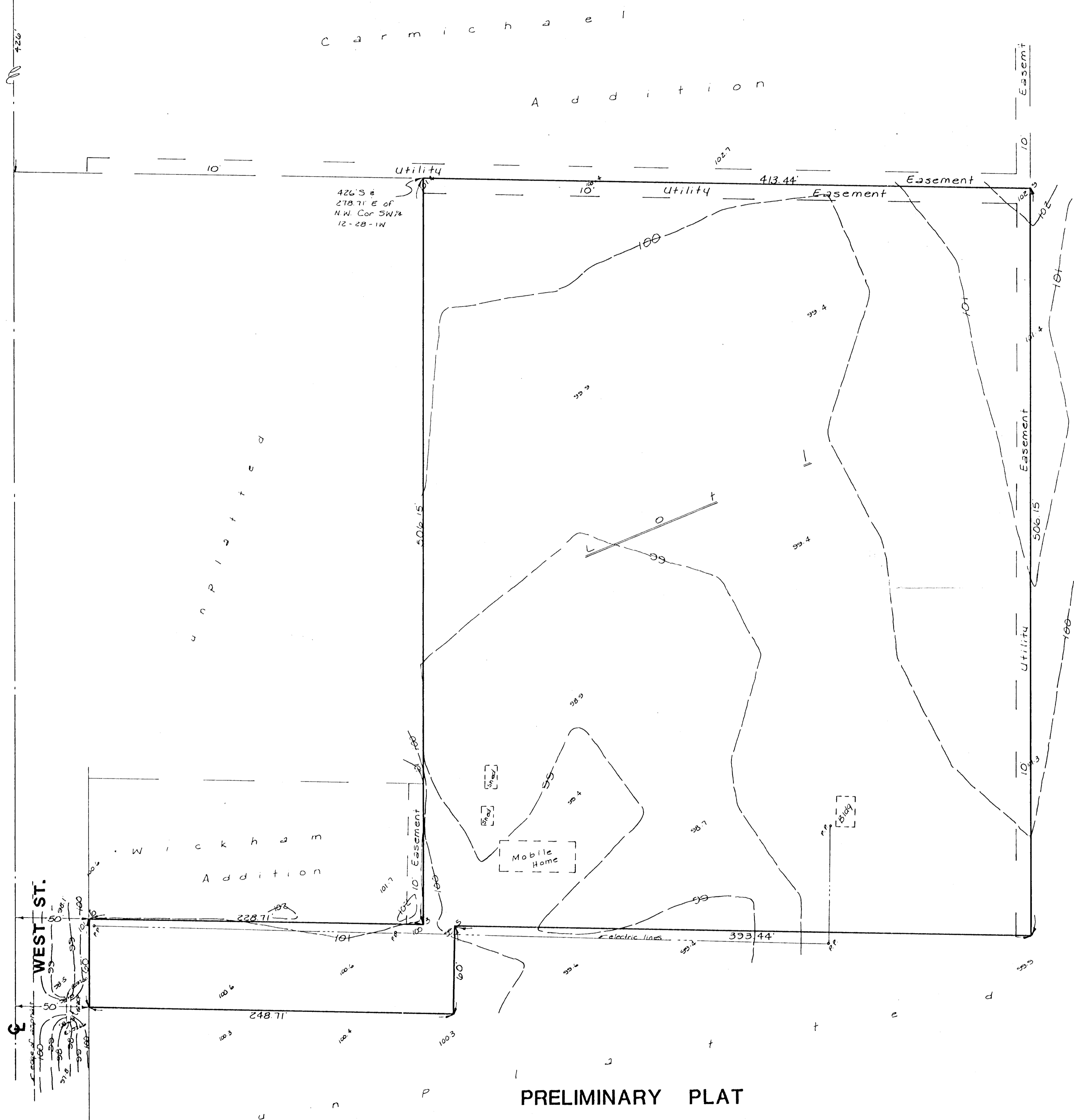


N.W. Cor S.W. 1/4
Sec. 12, Twp 28-S, R-1-W



1" = 40'

Bench Mark:
73' cut in E of walk 5 N.W.
of the N.W. Cor of Blk #3142
West St.
Elev = 100.99 City Datum



u
n
p
l
i
s
t
r
e
d

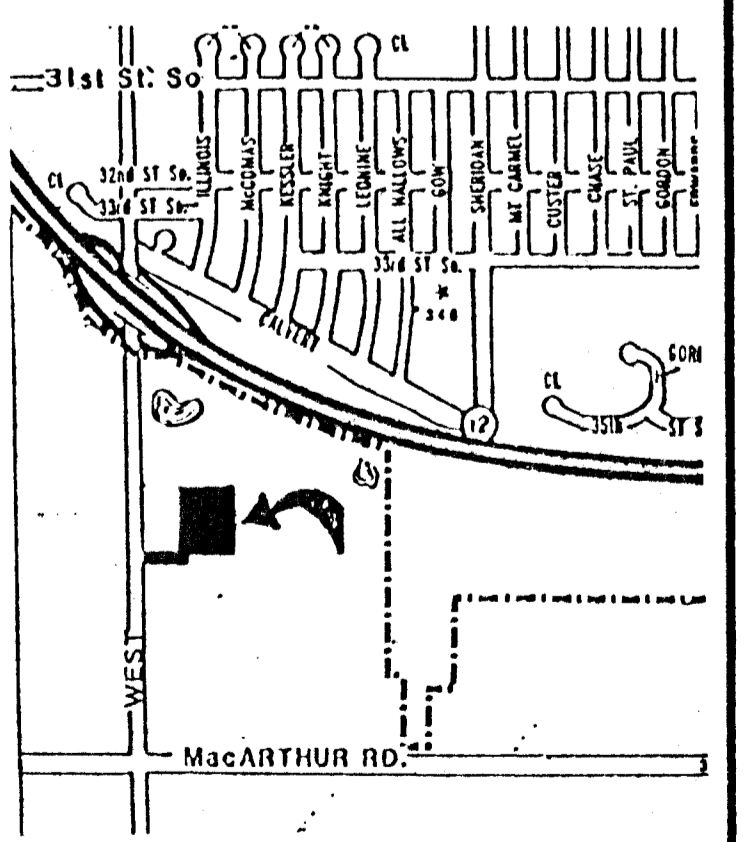
WEST ST.

PRELIMINARY PLAT

TRIMMELL ADDITION

A TRACT IN THE S.W. 1/4, SEC. 12, TWP. 28-S, R-1-W

OWNER: HAROLD R. TRIMMELL



VICINITY MAP

Aug 25, 1989

CS801 52 b7v