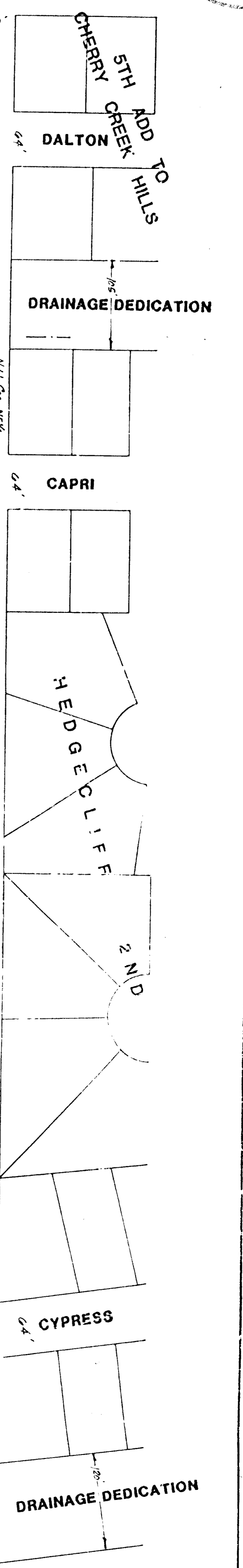
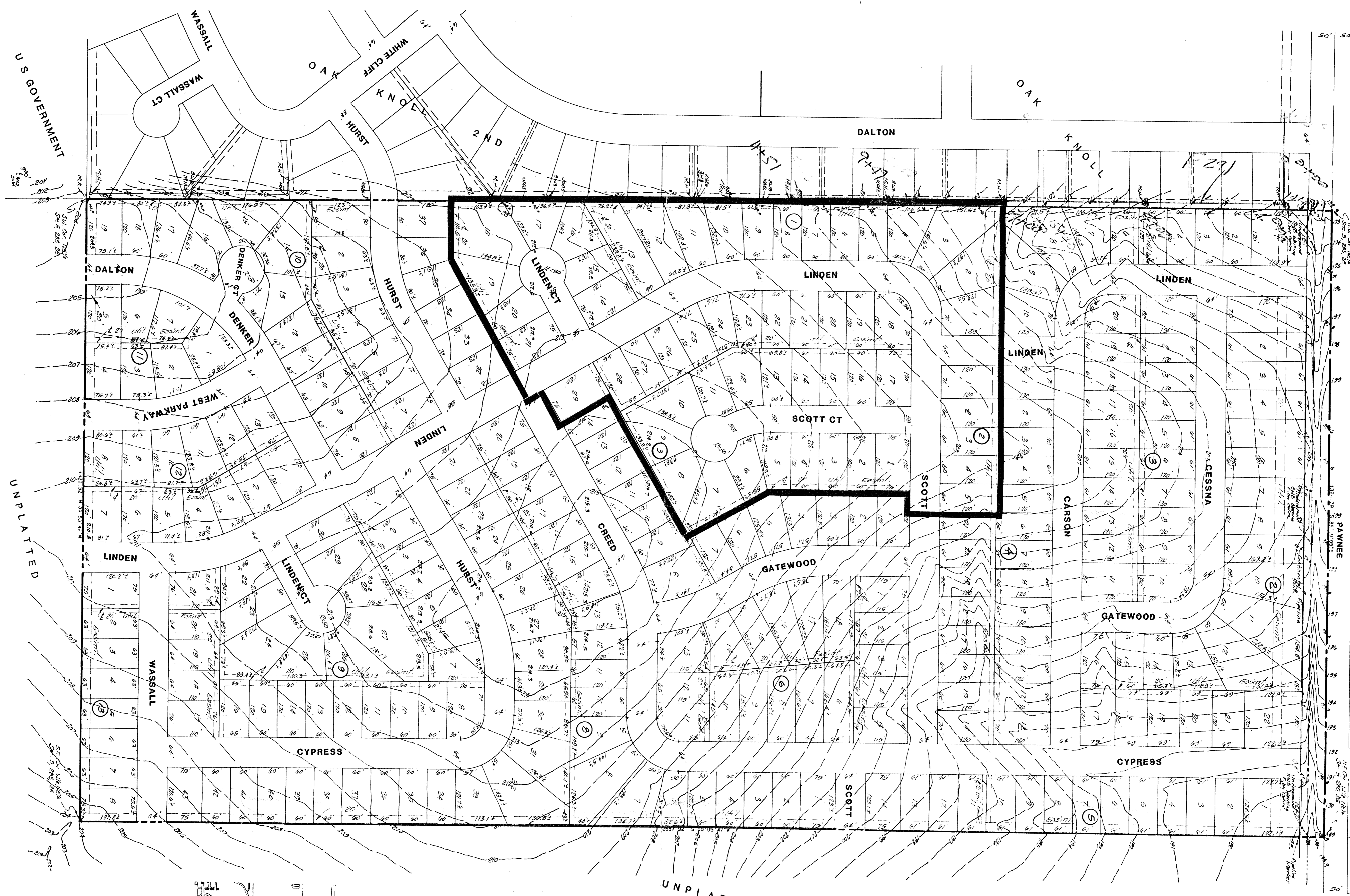
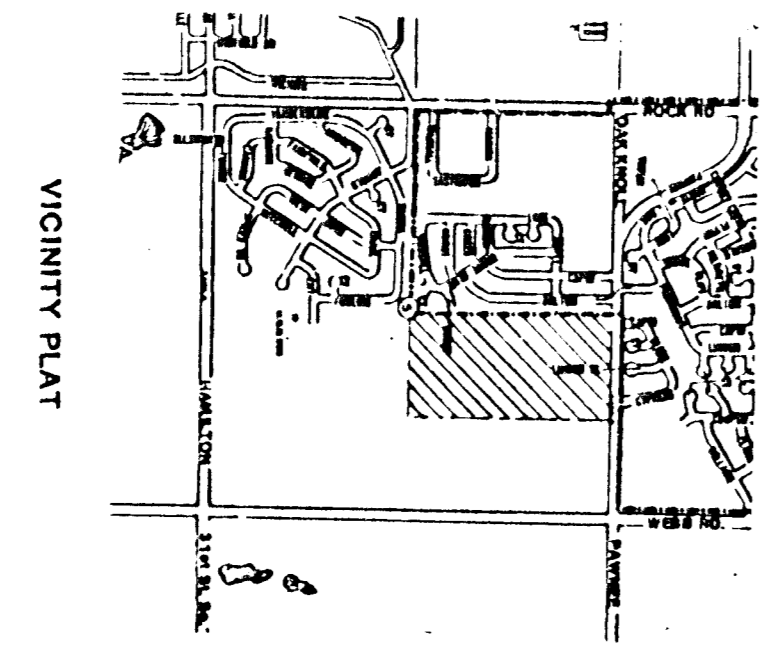


F 291



1" = 100'
 ELEV = CITY DATUM
 MAY 1987

BENCH MARK:
 CITY STD DISC 48" S & 2" E OF
 N.W. COR OF NE 1/4 S. 28-S, R-2-E
 ELEV = 192.205 CITY DATUM



PRELIMINARY PLAT
TOWNE PARC 2ND ADDITION

PART OF THE W 1/2
 THE W 1/2 OF THE NE 1/4 OF SEC 6, TWP 28-S, R-2-E,
 SEDGWICK COUNTY, KANSAS
BERNARD NOVICK

28 March 88
 15: UN 87
BAUGHMAN COMPANY, P.A.
 SURVEYING & ENGINEERING
 315 ELLIS • WICHITA, KANSAS 67211