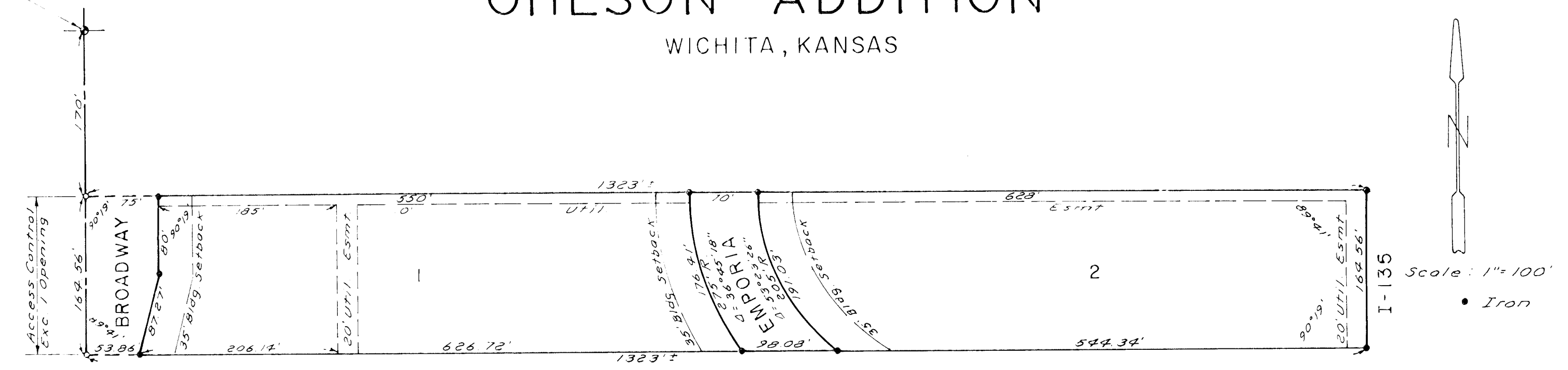


Sec 16 28 16

# OHLSON ADDITION

WICHITA, KANSAS



State of Kansas } S.S. We, Baughman Company, P.A.,  
 Sedgwick County } Surveyors in aforesaid county and state, do  
 hereby certify that we have surveyed and  
 platted "OHLSON ADDITION", Wichita, Kansas,  
 and that the accompanying plat is a true  
 and correct exhibit of the property surveyed,  
 described as beginning at a point on the west  
 line of Section 16, T28S, R1E of the 6th P.M.,  
 Sedgwick County, Kansas, said point being  
 170 feet south of the NW corner thereof;  
 thence easterly, parallel with the north line  
 of said NW 1/4, 1323 feet more or less, to the east  
 line of the NW 1/4 of said NW 1/4; thence southerly,  
 along said east line, 169.56 feet; thence west-  
 erly, parallel with the north line of said NW 1/4,  
 1323 feet, more or less, to the west line of said  
 NW 1/4; thence northerly, along said west line,  
 169.56 feet to the point of beginning, in-  
 cluding all of Child's 2nd Addition being  
 replatted.

Date Sept 8, 1980 Boughtman Company, P.A.  
 John E. Fumelle  
 John S. Lundblad

Know all men by this plat that we,  
 the undersigned, have caused the plat shown  
 in the surveyors certificate to be divided  
 into lots and streets to be known as "OHLSON  
 ADDITION", Wichita, Kansas. The easements  
 hereby granted as indicated on the plat for  
 the construction and maintenance of public streets.  
 The streets are hereby dedicated to the  
 use of the public. All abutments and  
 access to Broadway Ave over the plat  
 the west line of Lot 1 are hereby dedicated  
 to the City of Wichita, Kansas. It is  
 further provided that Lot 1 shall have  
 access to Broadway Ave. at one location and  
 location to be determined by the City Engineer.

Brad Ohlson  
 Brad Ohlson

State of Kansas } S.S. The foregoing instrument  
 was acknowledged before me this \_\_\_\_\_ day of  
 \_\_\_\_\_, 1980, by Brad Ohlson and \_\_\_\_\_  
 his wife. In testimony whereof, I have here-  
 unto set my hand and affixed my notarial  
 seal the day and year above written.

\_\_\_\_\_, Notary Public  
 My Commission Expires \_\_\_\_\_

This plat of "OHLSON ADDITION", Wichita,  
 Kansas, has been submitted to and approved  
 by the Wichita-Sedgwick County Metropolitan  
 Area Planning Commission, Wichita, Kansas.  
 Dated this \_\_\_\_\_ day of \_\_\_\_\_, 1980.

Wichita-Sedgwick County Metropolitan  
 Area Planning Commission  
 \_\_\_\_\_ Chairman  
 \_\_\_\_\_ Secretary

This plat approved and all dedications  
 shown hereon accepted by the Board of City  
 Commissioners, Wichita, Kansas, this  
 day of \_\_\_\_\_, 1980.

\_\_\_\_\_ Mayor  
 \_\_\_\_\_ City Clerk

This plat approved and all dedications  
 shown hereon accepted by the Board of County  
 Commissioners, Sedgwick County, Kansas, this  
 day of \_\_\_\_\_, 1980.

\_\_\_\_\_ Chairman  
 \_\_\_\_\_ Commissioner  
 \_\_\_\_\_ Commissioner  
 \_\_\_\_\_ County Clerk

Entered on transfer record this \_\_\_\_\_  
 day of \_\_\_\_\_, 1980.

\_\_\_\_\_ County Clerk

State of Kansas } S.S. This is to certify that this  
 Sedgwick County } plat has been filed for record in the Office  
 of the Register of Deeds this \_\_\_\_\_ day of  
 \_\_\_\_\_, 1980, at \_\_\_\_\_ o'clock, \_\_\_\_\_ M., and is  
 duly recorded.

\_\_\_\_\_ Register of Deeds  
 \_\_\_\_\_ Deputy

OHLSON ADDITION  
 SEPT. 22, 1980